

HOME  TRUTHS

Preston Road, Coppull

PR7 5DN

In Excess of **£150,000**





Stylish and spacious three bedroom end terrace property which has been recently refurbished. With easy access to village amenities, schools and primary transport routes this is an excellent first time buy or investment property where you can expect a return of around 5%. Available with no upward chain.

Step into the vestibule and from there to the spacious living room. To the rear, the dining kitchen comprises a range of wall and base units with integrated appliances including electric hob, oven and grill, dishwasher and space, power and plumbing for other appliances. Completing the ground floor is the bathroom comprising wash hand basin, wc, bath with screen and electric shower over.

Externally the property has a yard with vehicle access to the rear and views over playing fields.

To the first floor are two double bedrooms and one comfortable single.

As well as new flooring, kitchen and bathroom the refurbishment includes a new central heating boiler and rewire. Do give us a call to arrange a viewing and make it yours. EPC D, Council tax A, Freehold.

Council Tax band: A

Tenure: Freehold



Stylish and spacious three bedroom end terrace property which has been recently refurbished. With easy access to village amenities, schools and primary transport routes this is an excellent first time buy or investment property where you can expect a return of around 5% No upward chain. Council Tax band: A

Tenure: Freehold

- Refurbished end terrace property
- Three bedrooms
- New bathroom
- New breakfast kitchen
- Vehicle access to the rear
- No upward chain



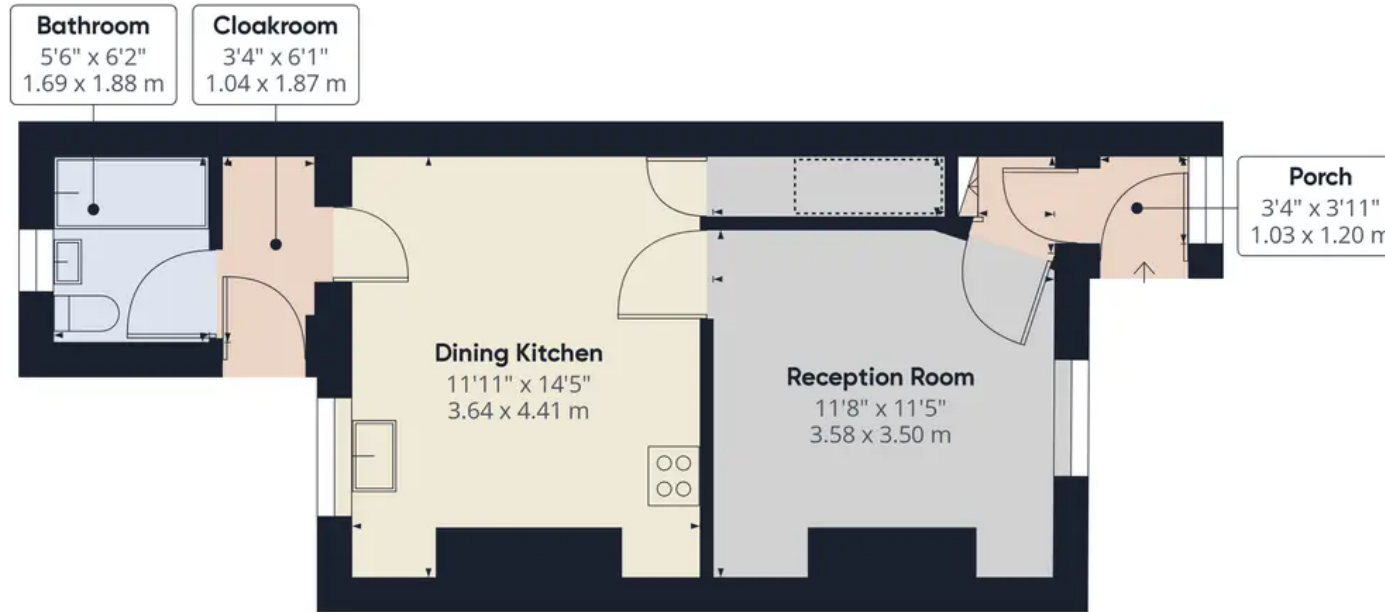
HOME  TRUTHS

Eccleston Branch
265 The Green, Eccleston, PR7 5TF
01257 451673

Coppull Branch
244 Spendmore Lane, Coppull, PR7 5DE
01257 794588

www.hometruthslancs.co.uk
office@hometruthslancs.co.uk





Floor 1



Floor 2

Approximate total area⁽¹⁾

711.22 ft²
66.07 m²

Reduced headroom

13.07 ft²
1.21 m²

(1) Excluding balconies and terraces

☐ Reduced headroom
(below 1.5m/4.92ft)

While every attempt has been made to ensure accuracy, all measurements are approximate, not to scale. This floor plan is for illustrative purposes only.

GIRAFFE360