

HOME  TRUTHS

Longfield, Penwortham

PRI OTB





Fabulous ground floor apartment with two double bedrooms, ample parking and extensive gardens just ready to move in to. Whether you are looking for an investment, first time buy or pied a terre this lovely property is available with no upward chain.

Step into the entrance hallway, with understair storage and linen cupboard, and from there to the living room with space for both dining and comfortable furniture. The kitchen comprises a range of wall and base units with electric hob, oven and grill with space, power & plumbing for additional appliances including the Main combi boiler.

Both bedrooms can accommodate a double bed and the bathroom comprises bath with screen and mixer shower over, wc and wash hand basin on vanity.

Externally the property has gardens to three side with off road parking for up to two vehicles plus garage with power and light.

Do give us a call to arrange a viewing and make it yours. Council tax B, EPC C, Leasehold.



Fabulous ground floor apartment with two double bedrooms, ample parking and extensive gardens just ready to move in to. Available with no upward chain.

Council Tax band: B

Tenure: Leasehold

EPC Energy Efficiency Rating: C

- Delightful ground floor apartment
- Extensive gardens
- Ample off road parking
- Sought after location
- Virtual tour
- No upward chain



HOME  TRUTHS

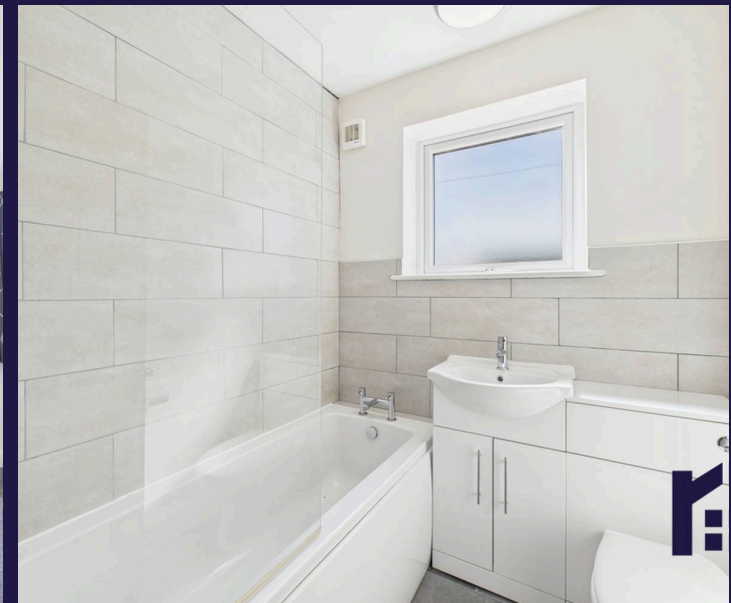
Eccleston Branch

265 The Green, Eccleston, PR7 5TF
01257 451673

Coppull Branch

244 Spendmore Lane, Coppull, PR7 5DE
01257 794588

www.hometruthslancs.co.uk
office@hometruthslancs.co.uk



Approximate total area⁽¹⁾

632.69 ft²

58.78 m²

Reduced headroom

10.1 ft²

0.94 m²

(1) Excluding balconies and terraces

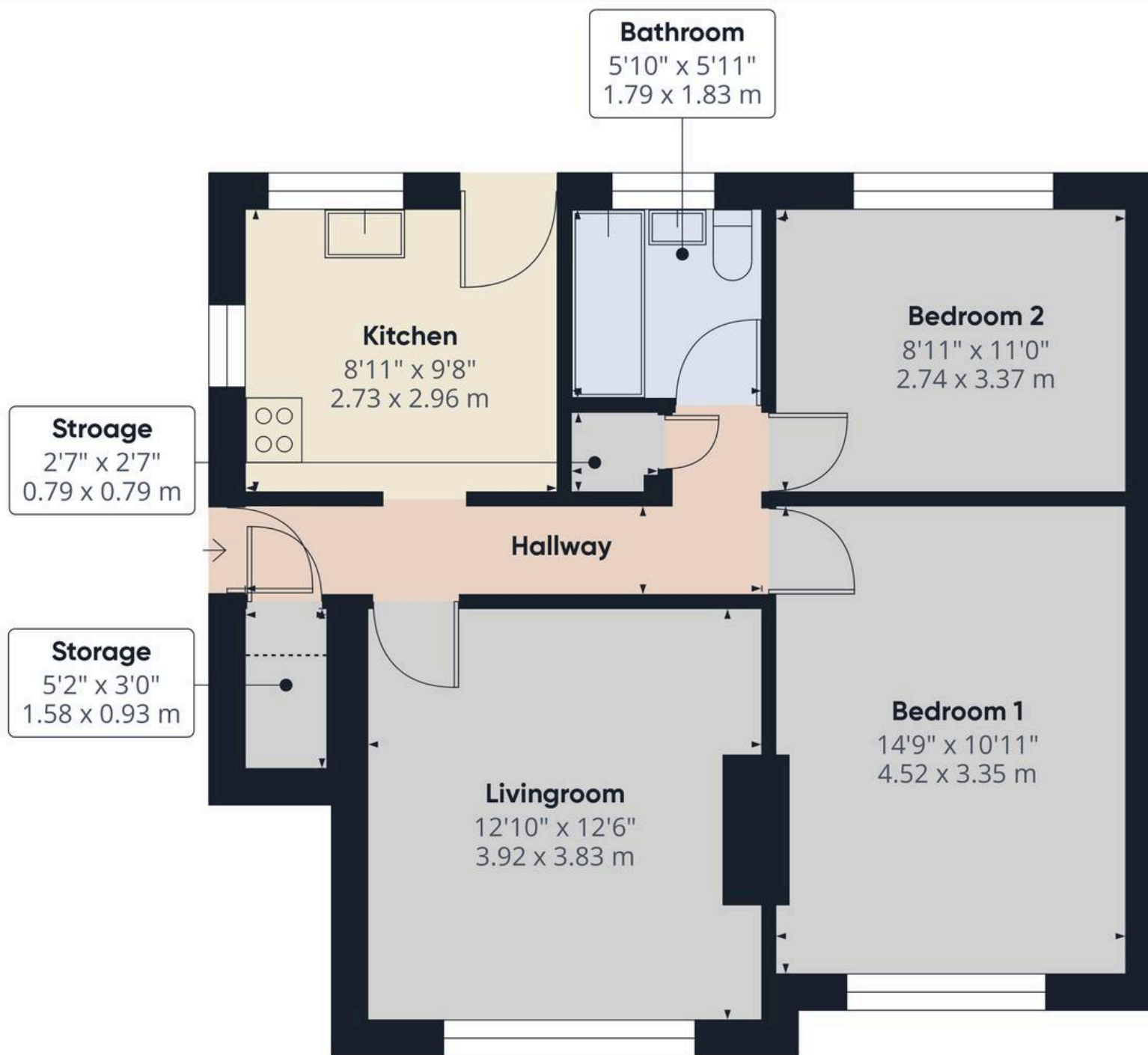
Reduced headroom

..... Below 5 ft/1.5 m

While every attempt has been made to ensure accuracy, all measurements are approximate, not to scale. This floor plan is for illustrative purposes only.

Calculations were based on RICS IPMS 3C standard. Please note that calculations were adjusted by a third party and therefore may not comply with RICS IPMS 3C.

GIRAFFE360



Floor 1 Building 1