

HOME  TRUTHS

Bradley Lane, Ecclestone

PR7 5TQ





Spacious three bedroom end terrace in the heart of Ecclestone village with over 1000 square feet of versatile accommodation. Available with no upward chain.

The property is set back from the road with a driveway for one car. The ground floor comprises of lounge with large picture window to the front and feature gas fireplace, large kitchen dining area with integrated oven and hob and utility area with extra plumbing and space for other appliances. To the rear of the property is an extra reception room or bedroom three, a large double with patio doors leading out to garden. The ground floor shower room includes shower enclosure, wc and wash hand basin.

The sunny rear garden is laid to lawn with patio area, mature shrubs and trees making it the perfect place to relax or entertain. Back inside, carpeted stairs lead to two double bedrooms, one with built in storage and the three-piece bathroom with panelled bath with shower over, wash hand basin and low level wc.

Gas centrally heated, double glazed and beautifully presented within walking distance of village amenities and excellent schools, this is a delightful place to call home.



Spacious three bedroom end terrace in the heart of Eccleston village with over 1000 square feet of versatile accommodation. Available with no upward chain.

Council Tax band: B

Tenure: Leasehold

EPC Energy Efficiency Rating: D

- Spacious end terrace property
- Over 1,000 square feet of versatile accommodation
- Large, private, west facing garden
- Three bedrooms & two bathrooms
- Protected off road parking
- No upward chain



HOME  TRUTHS

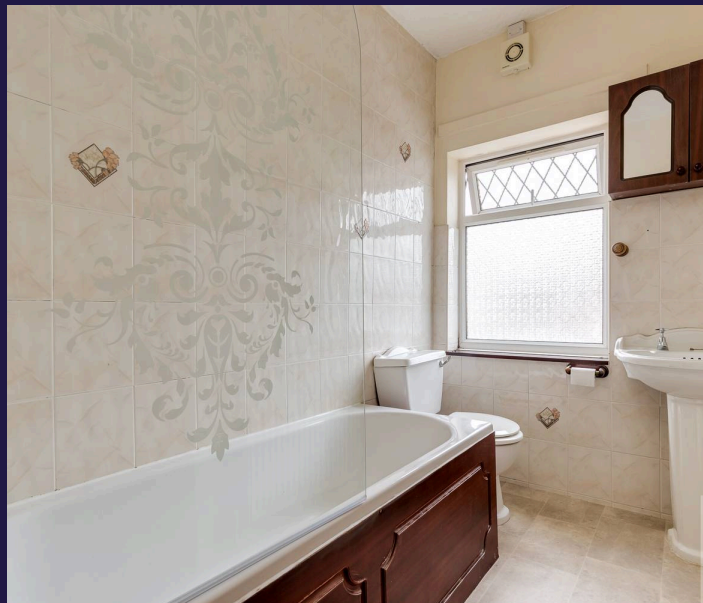
Eccleston Branch

265 The Green, Eccleston, PR7 5TF  
01257 451673

Coppull Branch

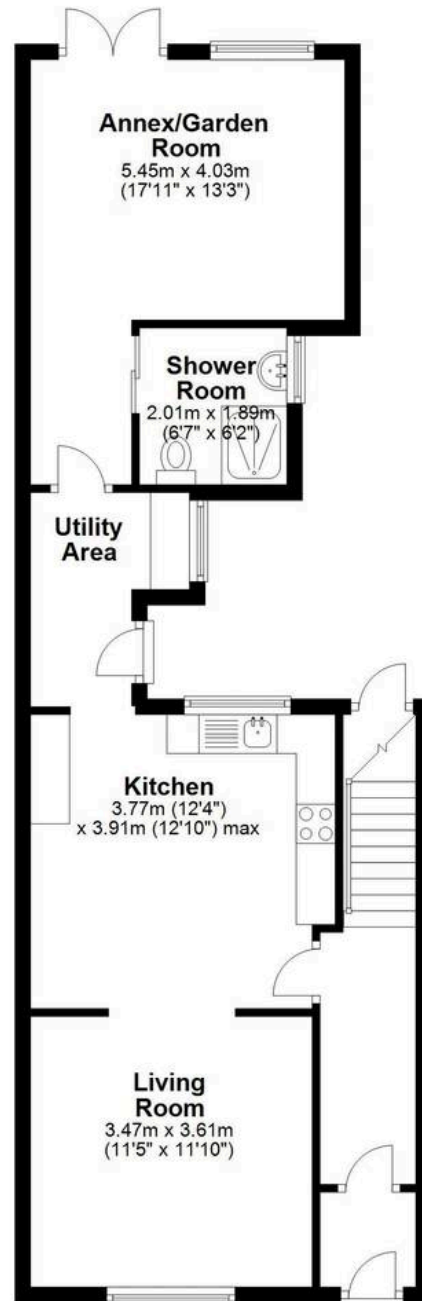
244 Spendmore Lane, Coppull, PR7 5DE  
01257 794588

[www.hometruthslancs.co.uk](http://www.hometruthslancs.co.uk)  
[office@hometruthslancs.co.uk](mailto:office@hometruthslancs.co.uk)



## Ground Floor

Approx. 61.5 sq. metres (661.7 sq. feet)



## First Floor

Approx. 36.3 sq. metres (390.4 sq. feet)



Total area: approx. 97.7 sq. metres (1052.1 sq. feet)

THIS FLOOR PLAN IS FOR ILLUSTRATION ONLY AND IS NOT A SCALE DRAWING  
Plan produced using PlanUp.