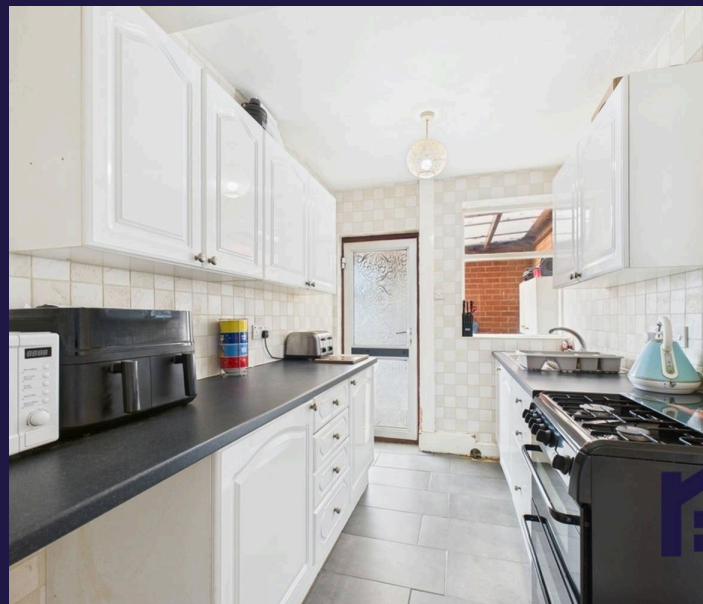
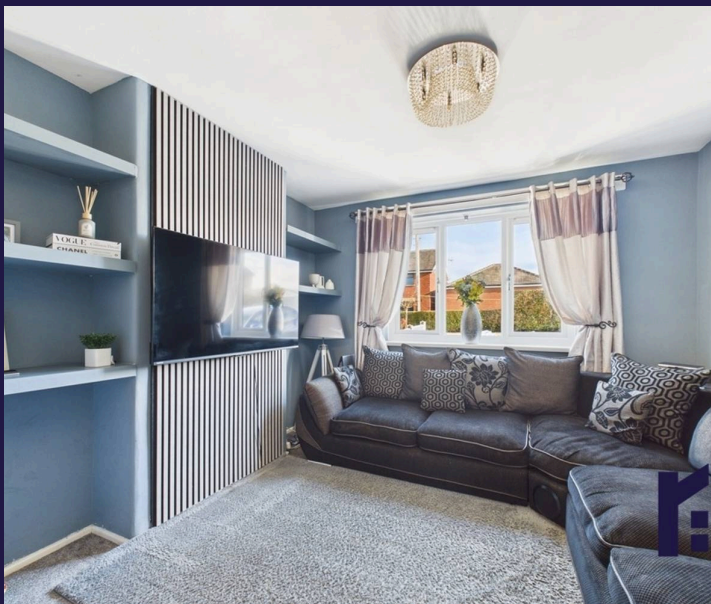
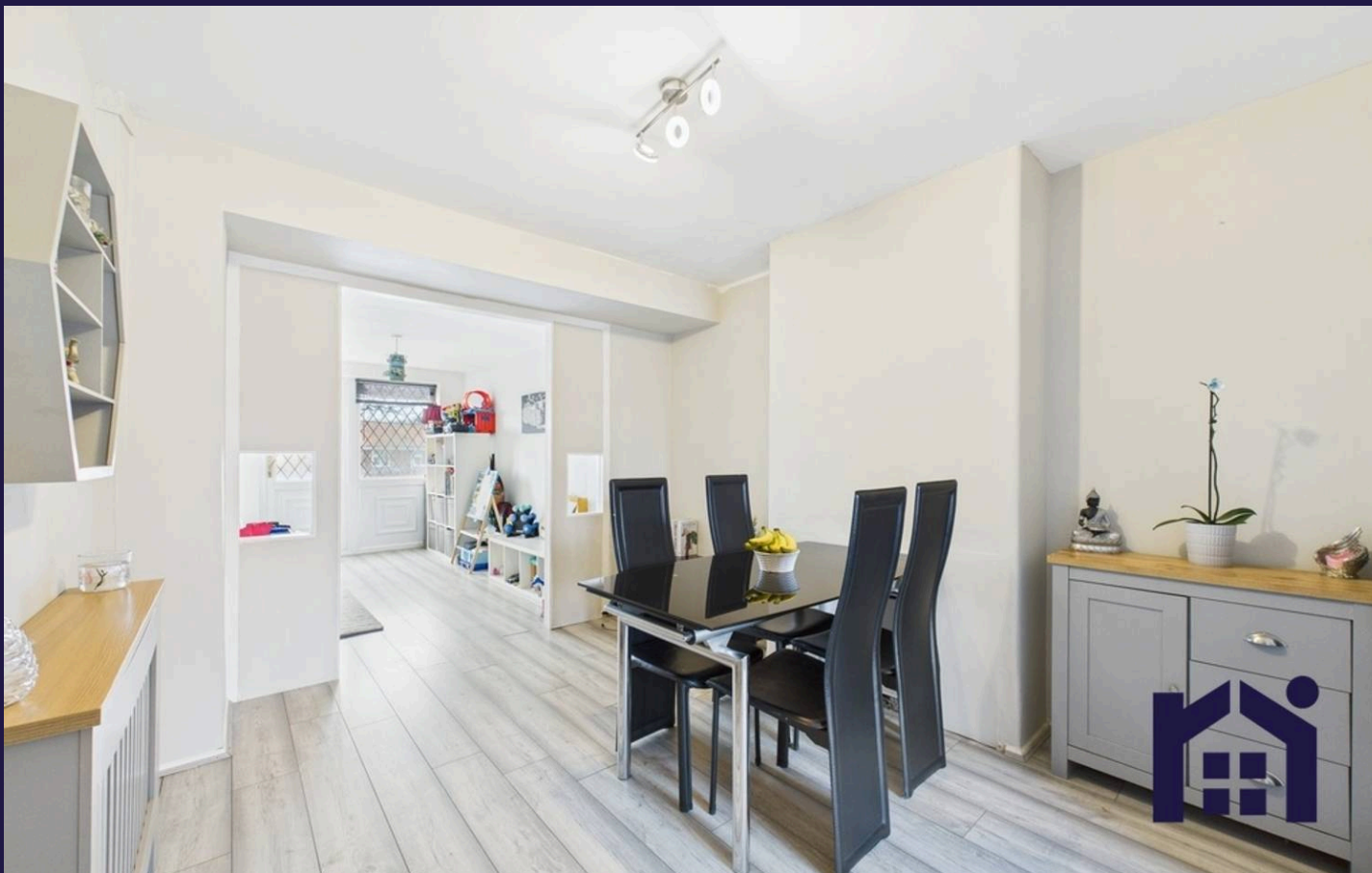


Lancaster Street, Coppull

PR7 4QB





Spacious, extended three bedroom semi detached property with large west facing garden and offering 925 square feet of versatile accommodation. In a popular location close to excellent schools, this family home is available with no upward chain. To the front the driveway leads to the main entrance. Step into the hallway and from there to the reception rooms with living room to the front, dining in the middle and large playroom to the rear, with bathroom off, and door opening to the garden. The kitchen comprises a range of wall and base units with space, power & plumbing for appliances and steps lead down to the separate utility room which can accommodate additional appliances. Step outside into the garden with upper and lower lawn and terraces to take full advantage of the slope and the sun at different times of the day. Back inside, stairs lead to the first floor landing with bedrooms one and three to the front and bedroom two to the rear also housing the Worcester combi boiler. The bathroom comprises L shaped bath with screen and rainfall shower over and wc & wash hand basin in vanity. Within easy reach of primary transport routes, excellent schools and the beautiful Yarrow Valley this is an excellent family home.

Spacious, extended semi detached property with large west facing garden and 925 square feet of versatile accommodation. Close to excellent schools, this family home is available with no upward chain. Council Tax band: B

Tenure: Freehold

- Extended semi detached property
- Three bedrooms
- Two bathrooms
- Virtual tour
- Large, west facing garden
- No upward chain



HOME  TRUTHS

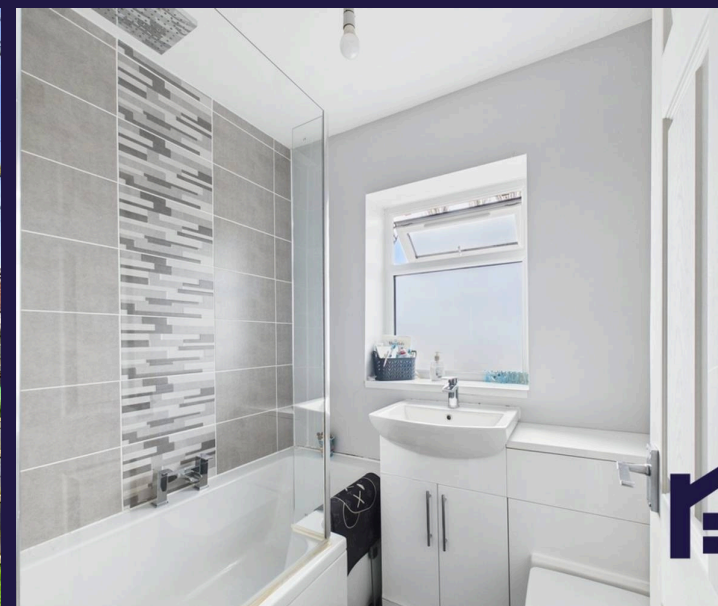
Ecclestone Branch

265 The Green, Ecclestone, PR7 5TF
01257 451673

Coppull Branch

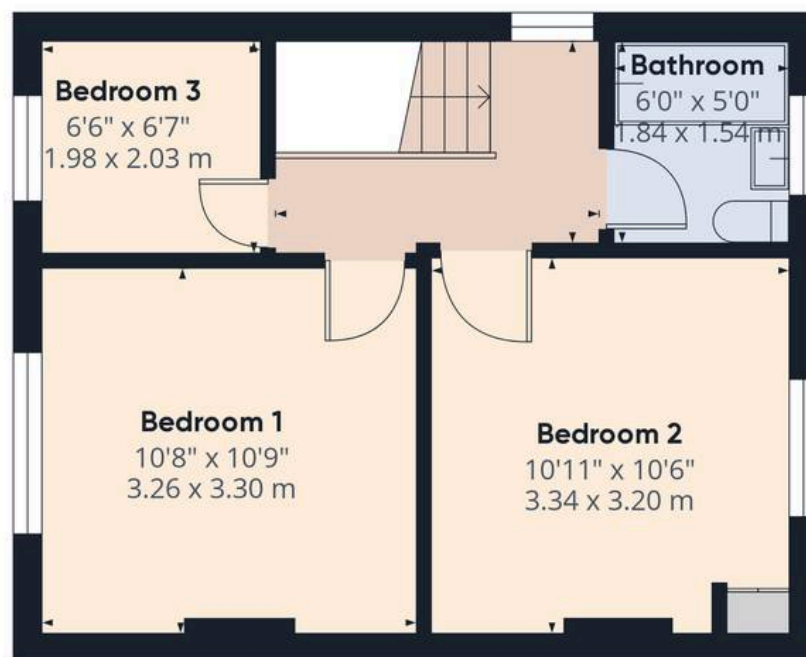
244 Spendmore Lane, Coppull, PR7 5DE
01257 794588

www.hometruthslancs.co.uk
office@hometruthslancs.co.uk





Floor 1



Floor 2

Approximate total area⁽¹⁾

924.94 ft²

85.93 m²

(1) Excluding balconies and terraces

While every attempt has been made to ensure accuracy, all measurements are approximate, not to scale. This floor plan is for illustrative purposes only.

Calculations were based on RICS IPMS 3C standard. Please note that calculations were adjusted by a third party and therefore may not comply with RICS IPMS 3C.

GIRAFFE360