

HOME  TRUTHS

Spinners Court, Buckshaw Village

PR7 7AU


£120,000



A rare opportunity to purchase a first class ground floor apartment with designated parking space, close to the village hub and within easy reach of all amenities. With two bedrooms and absolutely ready to move into this property is available with no upward chain.

Step into the entrance hallway and from there to the living room with plenty of space for both dining and comfortable furniture, and with the kitchen comprising a range of wall and base units, electric hob, oven and grill, and having space, power and plumbing for additional appliances.

Bedroom one is a spacious double with bedroom two a comfortable single. The bathroom comprises tiled flooring and elevations, bath with screen and electric shower over, wash hand basin, wc, ladder heated towel rail and bespoke storage.

This is an excellent first step on the property ladder, pied a terre or downsize property. If looking for an investment this property would generate a return in so do give us a call to arrange a viewing and make it yours. Council tax B, EPC C, Leasehold.



A rare opportunity to purchase a first class ground floor apartment with designated parking space, close to the village hub and within easy reach of all amenities. With two bedrooms and absolutely ready to move into this property is available with no upward chain.

Council Tax band: B

Tenure: Leasehold

EPC Energy Efficiency Rating: C

EPC Environmental Impact Rating: D

- Perfect ground floor apartment
- Two bedrooms
- Allocated parking
- Beautifully presented
- Virtual tour
- No upward chain



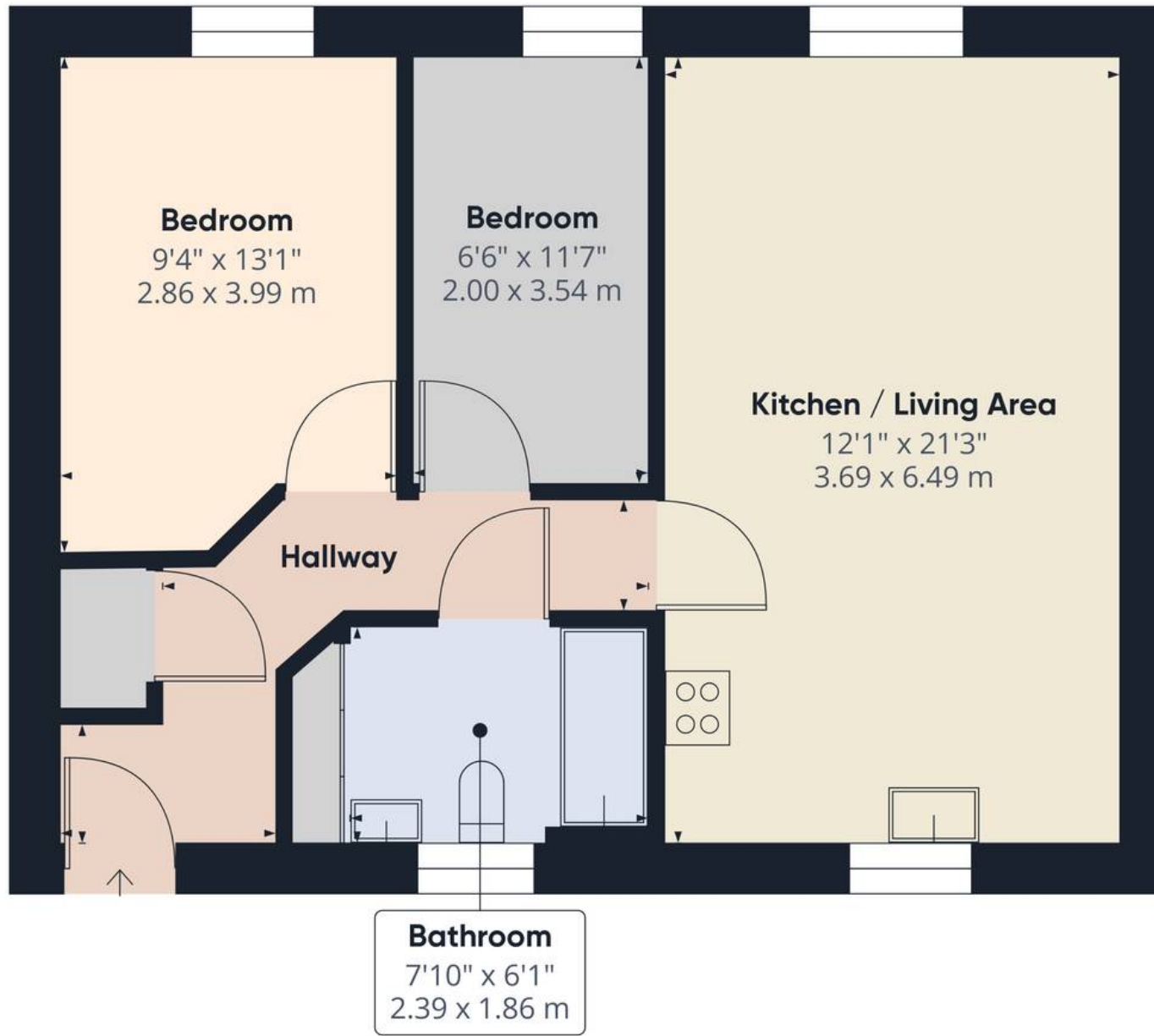
HOME  TRUTHS

Eccleston Branch
265 The Green, Eccleston, PR7 5TF
01257 451673

Coppull Branch
244 Spendmore Lane, Coppull, PR7 5DE
01257 794588

www.hometruthslancs.co.uk
office@hometruthslancs.co.uk





Approximate total area⁽¹⁾

582.65 ft²

54.13 m²

(1) Excluding balconies and terraces

While every attempt has been made to ensure accuracy, all measurements are approximate, not to scale. This floor plan is for illustrative purposes only.

Calculations are based on RICS IPMS 3C standard.

GIRAFFE360