

HOME  TRUTHS

Hindley Street, Chorley

PR7 2DY


£125,000



Delightful two bedroom terrace property with private rear garden, within easy walking distance of all town centre amenities and local schools. Available with no upward chain.

Stroll through the front garden with crushed slate bordered by mature laurel hedging to the main entrance. Step in to the large reception room and from there to the dining kitchen comprising a range of wall and base units with integrated gas hob, electric oven and grill, Main combi boiler and space, power and plumbing for other appliances.

Step out into the west facing courtyard garden bordered by mature laurel hedging for both ambience and privacy.

Back inside, stairs lead to the first floor landing with bedroom one being a large double to the front and bedroom two a very comfortable single to the rear. The bathroom comprises tiled flooring and elevations, corner bath with mixer shower over, wc, wash hand basin and linen cupboard.

Whether this is a first time buy or an investment, this property has plenty to offer so do give us a call to arrange a viewing and make it yours. Council tax A, EPC D, Leasehold.



Delightful two bedroom terrace property with private rear garden, within easy walking distance of all town centre amenities and local schools. Available with no upward chain. Council Tax band: A

Tenure: Leasehold

EPC Energy Efficiency Rating: D

EPC Environmental Impact Rating:

- Lovely mid terrace property
- Two bedrooms
- Over 700 square feet of accommodation
- West facing courtyard garden
- Virtual tour
- Excellent first time buy or investment



HOME  TRUTHS

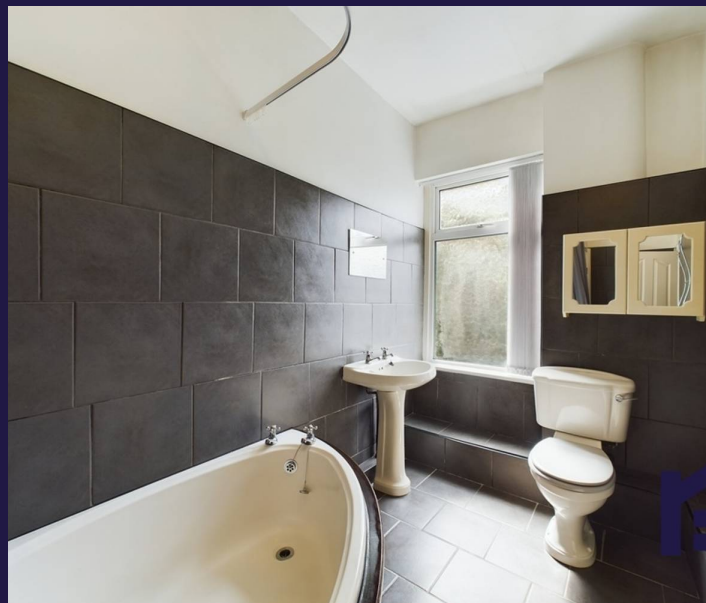
Eccleston Branch

265 The Green, Eccleston, PR7 5TF
01257 451673

Coppull Branch

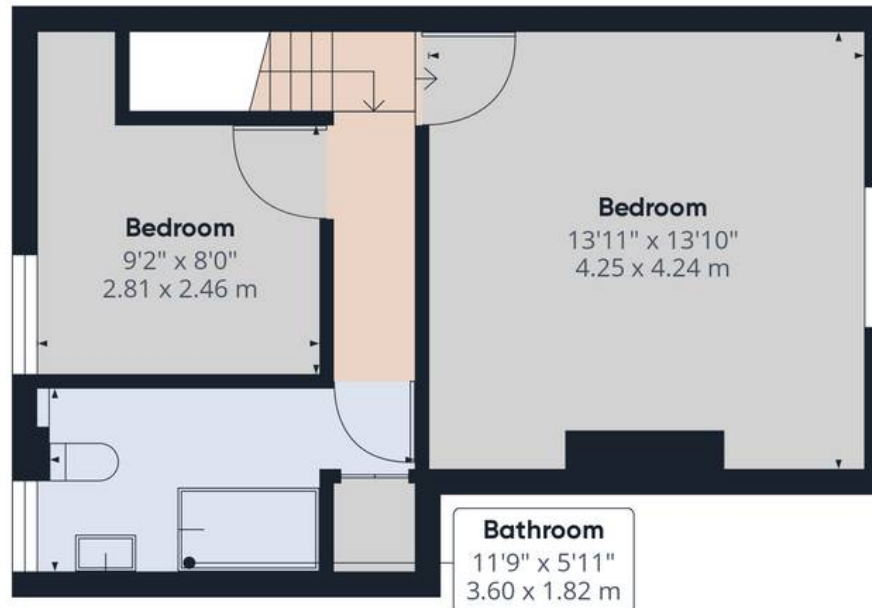
244 Spendmore Lane, Coppull, PR7 5DE
01257 794588

www.hometruthslancs.co.uk
office@hometruthslancs.co.uk





Floor 1



Floor 2

Approximate total area⁽¹⁾

721.5 ft²
67.03 m²

Reduced headroom

2.48 ft²
0.23 m²

(1) Excluding balconies and terraces

Reduced headroom

..... Below 5 ft/1.5 m

While every attempt has been made to ensure accuracy, all measurements are approximate, not to scale. This floor plan is for illustrative purposes only.

Calculations are based on RICS IPMS 3C standard.

GIRAFFE360