

HOME  TRUTHS



Riverside Crescent, Croston

PR26 9RU



£375,000



The old signalman's cottage is brimming with character and has been extended to create an annex with separate entrance offering up to four bedrooms and 1100 square feet of versatile accommodation in total. On a substantial corner plot this family home is available with no upward chain. To the front is off road parking for two vehicles with a pathway leading to the main entrance. Step into the vestibule and from there into the spacious living room. Leading off is the dining room which in turns opens to the kitchen comprising a range of wall and base units with space, power and plumbing for appliances and with doorway to the annex. To the first floor bedroom one has windows to two elevations one back to the village and the other across countryside, and bedroom two enjoys wonderful long views over to Tarleton parish church. The very spacious bathroom comprises bath with shower attachment, wc, wash hand basin and airing cupboard housing the Worcester combi boiler. The annex comprises a bedroom, bathroom with mixer shower in cubicle, wc and wash hand basin, with a further room which could either a bed or reception room. Externally, the gardens are mainly laid to lawn with mature planting and pathway to a utility area with shed.



The old signalman's cottage is brimming with character and has been extended to create an annex with separate entrance offering up to four bedrooms and 1100 square feet of versatile accommodation in total. On a substantial corner plot this family home is available with no upward chain.

Council Tax band: D

Tenure: Freehold

- Spacious and unique family home
- Substantial gardens
- Four bedrooms
- 1100 square feet of versatile accommodation
- Virtual tour



HOME  TRUTHS

Ecclestone Branch

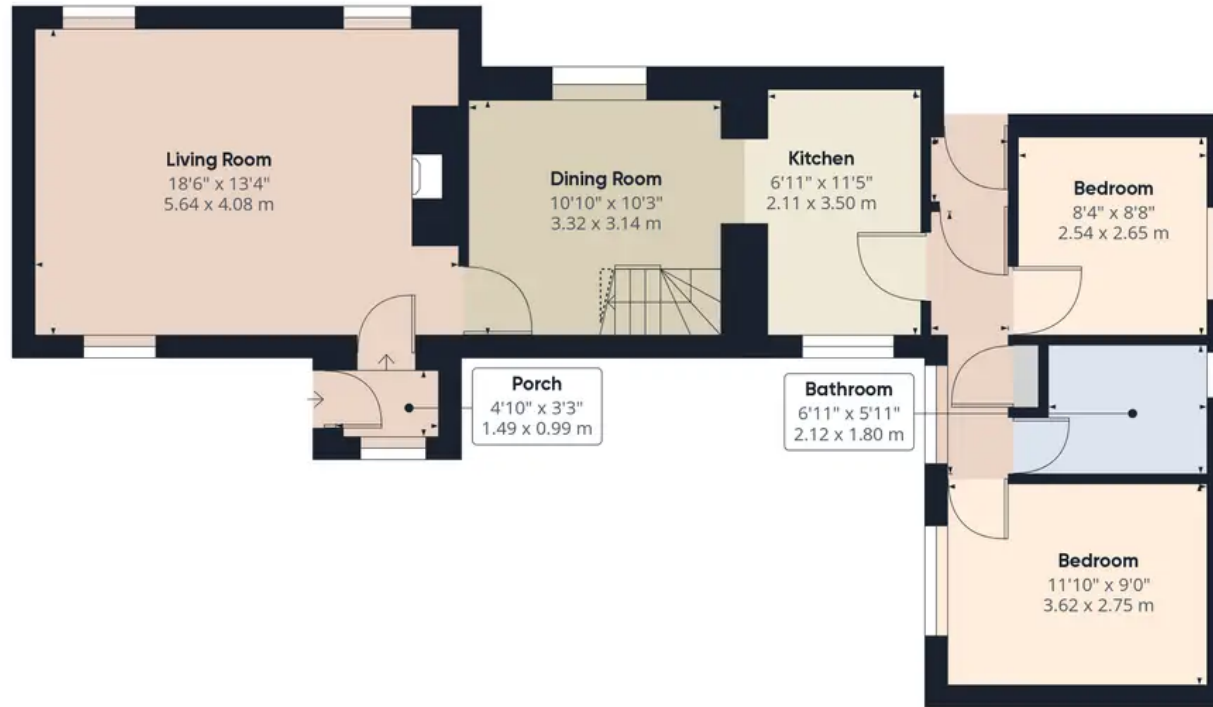
265 The Green, Ecclestone, PR7 5TF
01257 451673

Coppull Branch

244 Spendmore Lane, Coppull, PR7 5DE
01257 794588

www.hometruthslancs.co.uk
office@hometruthslancs.co.uk





Floor 1



Floor 2

Approximate total area⁽¹⁾

1108.39 ft²
102.97 m²

Reduced headroom

7.66 ft²
0.71 m²

(1) Excluding balconies and terraces

 Reduced headroom
(below 1.5m/4.92ft)

While every attempt has been made to ensure accuracy, all measurements are approximate, not to scale. This floor plan is for illustrative purposes only.