



The Hawthorns, Ecclestone

PR7 5QN



£350,000



Delightful and spacious detached true bungalow with two double bedrooms, ample parking in a very popular location within the village, within easy reach of all amenities, schools and countryside walks. Over 1,000 square feet in total. The driveway can accommodate several vehicles and leads past the front lawn to the main entrance. Step into the welcoming hallway and from there to the L shaped living room with plenty of space for both dining and comfortable furniture. The modern kitchen comprises a range of wall and base units with integrated appliances including gas hob, double electric oven and grill, microwave, dishwasher, washer/drier, refrigerator and freezer. Both bedrooms are good sized doubles with the larger benefiting from built in wardrobes. Completing the accommodation the bathroom comprises bath with screen and mixer shower over, tiled flooring and elevations, wc, wash hand basin and heated towel rail. Externally, the detached garage divides into parking and a workshop/storage with power and light, and the west facing garden is the perfect place in which to relax with lawn and planted borders.



Delightful and spacious detached true bungalow with two double bedrooms, ample parking in a very popular location within the village, within easy reach of all amenities, schools and countryside walks. Over 1,000 square feet in total.

Council Tax band: D

Tenure: Freehold

- Detached true bungalow
- Two double bedrooms
- Ample parking
- Detached garage and workshop
- Modern kitchen and bathroom
- Virtual tour



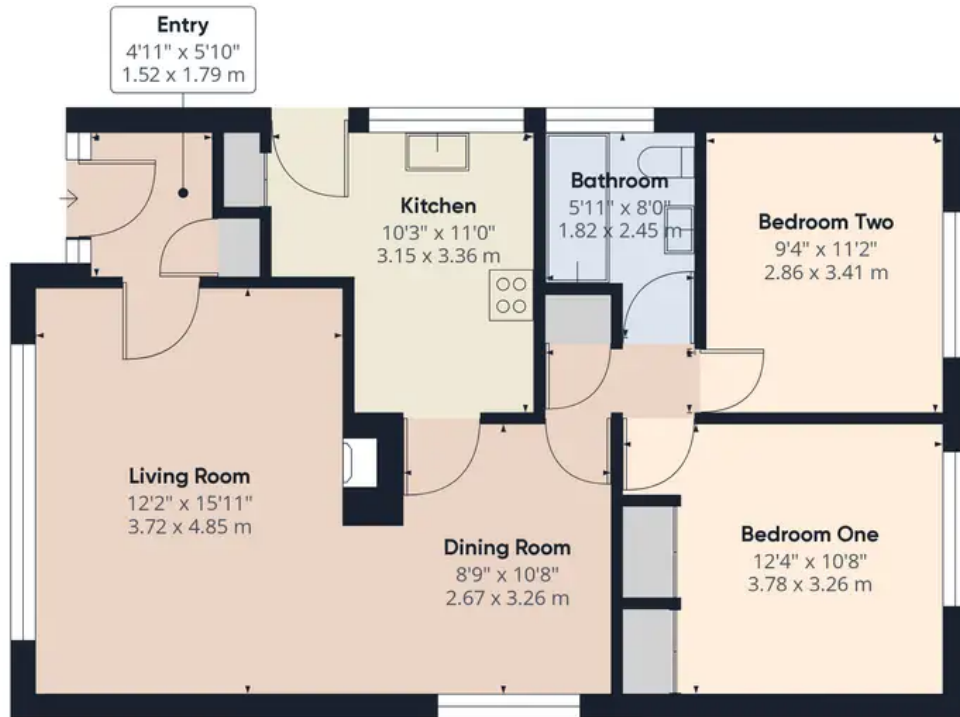
HOME  TRUTHS

Eccleston Branch
265 The Green, Eccleston, PR7 5TF
01257 451673

Coppull Branch
244 Spendmore Lane, Coppull, PR7 5DE
01257 794588

www.hometruthslancs.co.uk
office@hometruthslancs.co.uk





Floor 1 Building 1



Floor 1 Building 2

Approximate total area⁽¹⁾
1019.65 ft²
94.73 m²

(1) Excluding balconies and terraces

While every attempt has been made to ensure accuracy, all measurements are approximate, not to scale. This floor plan is for illustrative purposes only.

GIRAFFE360