

25 Lostock Road, Croston

PR26 9HT

£1,200 pcm





Fantastic three bedroom detached dormer bungalow with off road parking and spacious garden with lovely rear views, available to let now.

Tucked away in a lovely quiet cul-de-in the highly sought-after village of Croston, this spacious three bed detached home is set back from the road with a large front garden and has a driveway and carport for up to three cars leading up to the garage.

The ground floor comprises of a large reception room with feature electric fireplace and large picture window to the front of the property, kitchen diner with a range of wall and base units, freestanding electric oven and under counter fridge. The four-piece family bathroom includes shower enclosure, panelled bath, wash hand basin and low level wc. Bedroom one is a very big double and bedroom three is a comfortable single with some built in storage space.



There is a dining room/home office with stairs leading up to bedroom two which again is a double bedroom with plenty of built-in storage cupboards. Externally, this delightful property has a fantastic garden shaping around the property. To the rear is a patio area and garden laid to lawn with views looking over the fields. There are two storage sheds, one with light and power.

This delightful family home is within easy reach of schools and village amenities. Do give us a call to arrange your viewing. The property is available from now and requires a deposit of £1384, including a holding deposit of £276.

Council Tax Band: D

- Three bedrooms
- Two reception rooms
- Cul de sac location
- Over 1100sq ft of accommodation
- Available now
- Garage

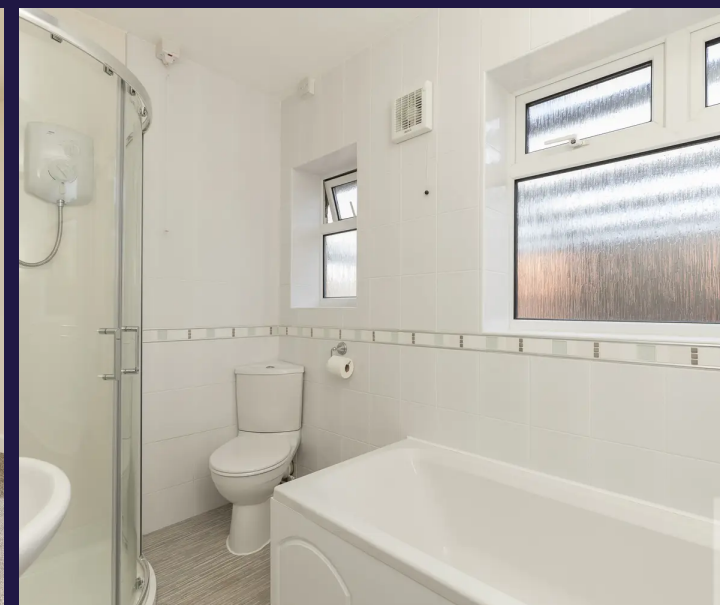


HOME  TRUTHS

Eccleston Branch
265 The Green, Eccleston, PR7 5TF
01257 451673

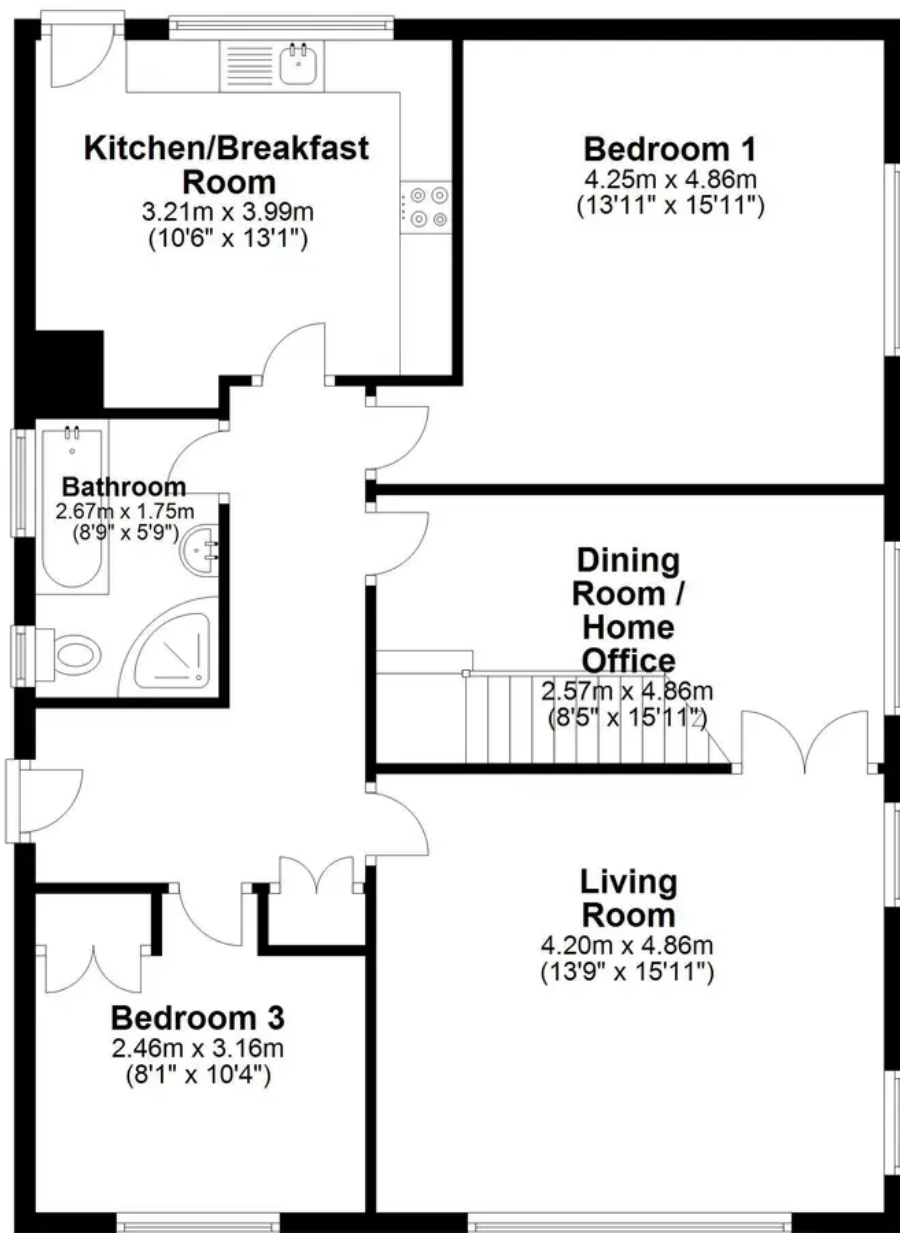
Coppull Branch
244 Spendmore Lane, Coppull, PR7 5DE
01257 794588

www.hometruthslancs.co.uk
office@hometruthslancs.co.uk



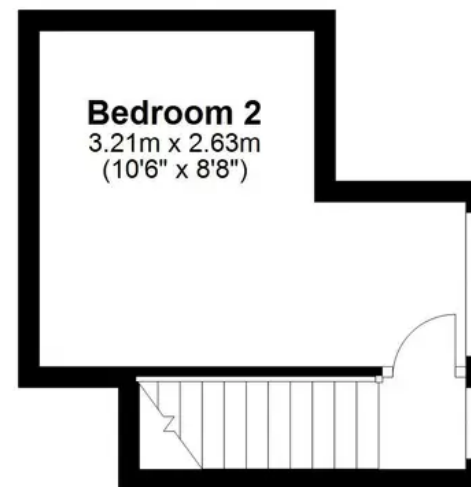
Ground Floor

Approx. 91.0 sq. metres (979.3 sq. feet)



First Floor

Approx. 13.8 sq. metres (148.4 sq. feet)



Total area: approx. 104.8 sq. metres (1127.7 sq. feet)

THIS FLOOR PLAN IS FOR ILLUSTRATION ONLY AND IS NOT A SCALE DRAWING
Plan produced using PlanUp.