

HOME  TRUTHS

Wyngarth Carwood Lane, Whittle-Le-Woods

PR6 7LW

  
£1,450 pcm



Substantial 3/4 bedroom stone built property in a popular residential area, close to schools, primary transport routes and offering c 1400 square feet of versatile accommodation. Available to let now.

The ground floor briefly comprises of entrance hallway, ground floor bathroom with shower enclosure, wc and wash hand basin, spacious lounge with French doors leading to the garden, fully fitted kitchen with breakfast island, integrated dishwasher, oven and hob and free standing washing machine, dining room and a snug which can also be used as a ground floor bedroom.

Upstairs there are two double bedrooms and a comfortable single, all have built in wardrobe or a freestanding wardrobe. The master has its own en suite bathroom with panelled bath with shower over, wc and wash hand basin. The family bathroom also comprises panelled bath with electric shower over, wc and wash hand basin.

Step outside onto the lovely and private terrace balcony with steps down to the lawn area with mature shrubs and access to a further garden area with vegetable patch. There is an additional driveway for a further three cars and this leads to the detached garage.



This great size family home has plenty of character so do give us a call to arrange a viewing and make it yours. The property is available now and requires a deposit of £1673 including holding deposit of £334.

Council Tax Band: C

EPC Rating: D

- Three/four bedroom cottage
- Three bathrooms
- Driveway and garage
- Spacious reception rooms
- Private garden
- Available now



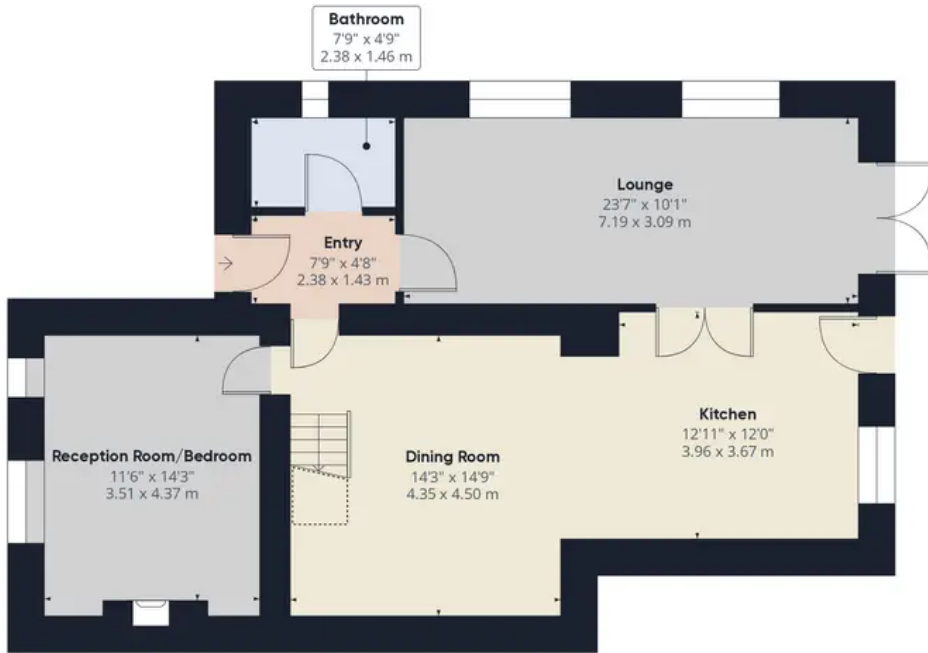
HOME  TRUTHS

Eccleston Branch  
265 The Green, Eccleston, PR7 5TF  
01257 451673

Coppull Branch  
244 Spendmore Lane, Coppull, PR7 5DE  
01257 794588

[www.hometruthslancs.co.uk](http://www.hometruthslancs.co.uk)  
[office@hometruthslancs.co.uk](mailto:office@hometruthslancs.co.uk)





Floor 1 Building 1



Floor 2 Building 1



Floor 1 Building 2

Approximate total area<sup>(1)</sup>

1595.82 ft<sup>2</sup>

148.26 m<sup>2</sup>

Reduced headroom

12.49 ft<sup>2</sup>

1.16 m<sup>2</sup>

(1) Excluding balconies and terraces

☐ Reduced headroom  
(below 1.5m/4.92ft)

While every attempt has been made to ensure accuracy, all measurements are approximate, not to scale. This floor plan is for illustrative purposes only.

GIRAFFE360