



Town Road, Croston

PR26 9RA

 £235,000



Fabulous three bedroom terrace cottage in the heart of the village of Croston within easy reach of all village amenities, excellent schools and countryside walks. Available with no upward chain. To the front the cobbled pathway leads past the flagged parking space to the main entrance. Step into the vestibule, with original tiled flooring, and from there to the living room with gas fire in hearth. To the rear the dining kitchen comprises a range of wall and base units with space, power and plumbing for appliances, Worcester combi boiler and walk in pantry. The rear porch opens to the delightful courtyard garden with external power and water supply and composite decking so you can relax and enjoy the afternoon sunshine. Back inside, stairs lead to the first floor landing with bedroom one to the rear, overlooking the garden. Bedroom two is also a double, with bedroom three a comfortable single. Completing the first floor is the wonderful and large bathroom comprising bath, wc, wash hand basin and electric shower in cubicle. The loft has ladder access and is boarded with light and power socket. With c 870 square feet of accommodation this is a wonderful place to call home. Do get in touch to arrange a viewing and make it yours.



Fabulous three bedroom terrace cottage in the heart of the village of Croston within easy reach of all village amenities, excellent schools and countryside walks. Available with no upward chain. Council Tax band: B

Tenure: Freehold

- Delightful mid terrace property
- Three bedrooms
- Parking space
- Ready to move into
- Modern kitchen and bathroom
- No upward chain



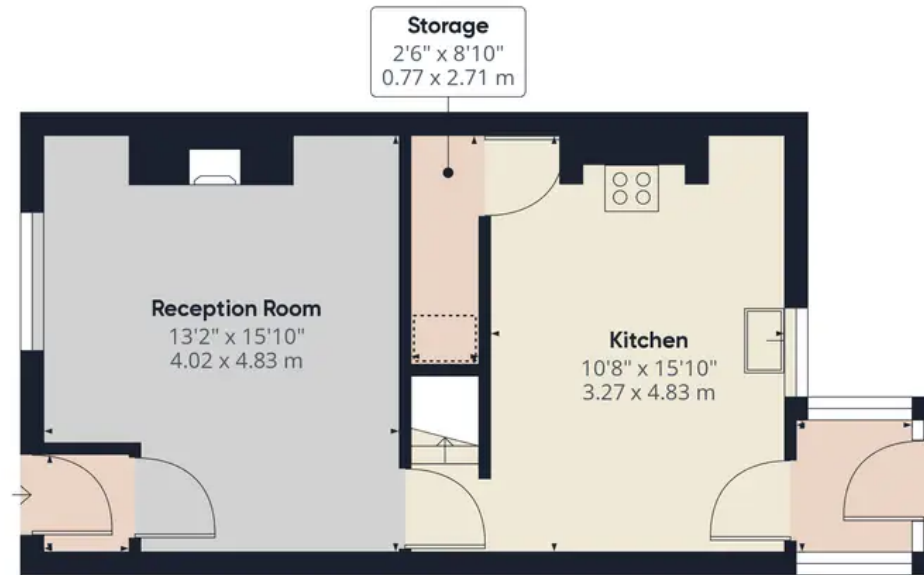
HOME  TRUTHS

Eccleston Branch
265 The Green, Eccleston, PR7 5TF
01257 451673

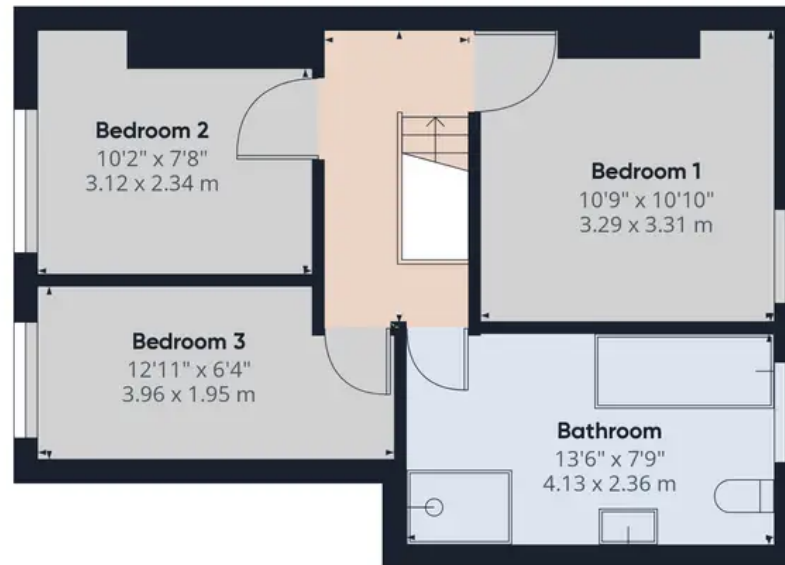
Coppull Branch
244 Spendmore Lane, Coppull, PR7 5DE
01257 794588

www.hometruthslancs.co.uk
office@hometruthslancs.co.uk





Floor 1



Floor 2

Approximate total area⁰

870.55 ft²

80.88 m²

Reduced headroom

4.42 ft²

0.41 m²

Excluding balconies and terraces

 Reduced headroom
(below 1.5m/4.92ft)

While every attempt has been made to ensure accuracy, all measurements are approximate, not to scale. This floor plan is for illustrative purposes only.

GIRAFFE360