



A bright and modern three bedroom, three bathroom apartment with porter. This apartment located on the eighth floor, with a modern kitchen, spacious living area with dining space. Three bedrooms with storage and en suite facilities. Heating and hot water included, pets welcome.

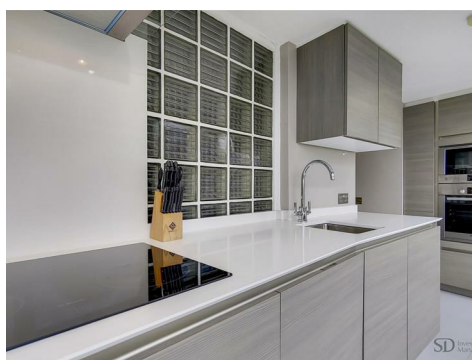
Boydell Court

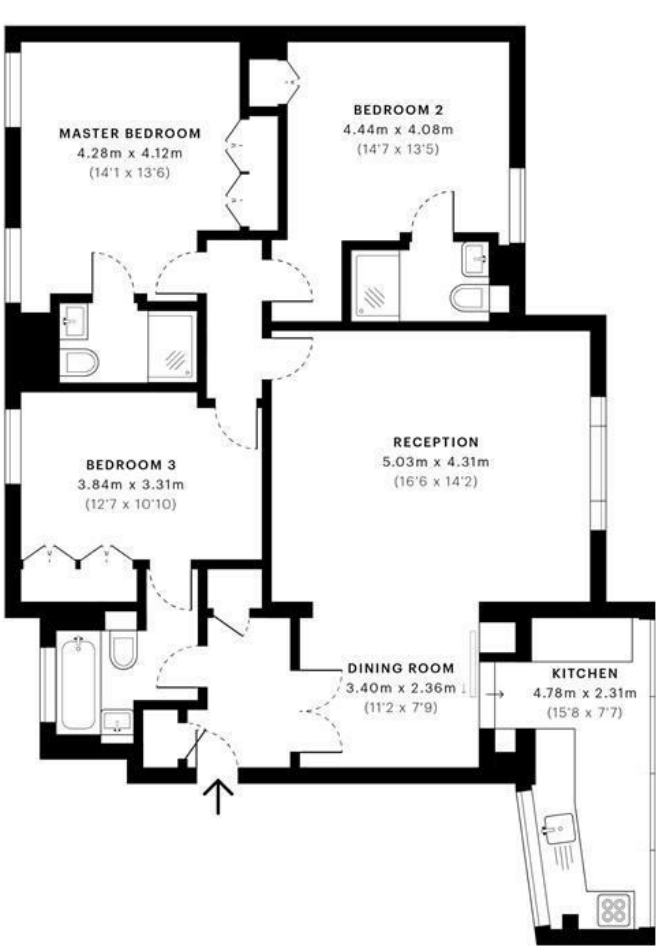
NW8 6NJ

£1,300 Per Week

Subject to Contract

FOXGREGORY





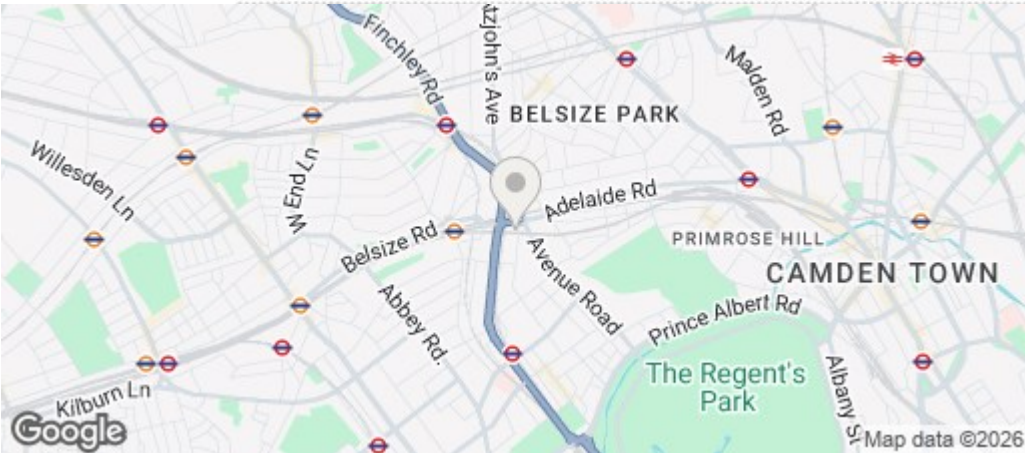
— Eighth Floor

GROSS INTERNAL AREA (GIA)
The footprint of the property
100.33 sqm / 1079.94 sqft

NET INTERNAL AREA (NIA)
Excludes walls and external features
Includes washrooms, restricted head height
91.91 sqm / 989.31 sqft

EXTERNAL STRUCTURAL FEATURES
Balconies, terraces, verandas etc.
0.00 sqm / 0.00 sqft

RESTRICTED HEAD HEIGHT
Limited use area under 1.5 m
0.00 sqm / 0.00 sqft



Energy Efficiency Rating

| | Current | Potential |
|---|-------------------------|-----------|
| Very energy efficient - lower running costs | | |
| (92 plus) A | | |
| (81-91) B | | |
| (69-80) C | | |
| (55-68) D | | |
| (39-54) E | | |
| (21-38) F | | |
| (1-20) G | | |
| Not energy efficient - higher running costs | | |
| England & Wales | EU Directive 2002/91/EC | |