



Bright and spacious two - three bedroom apartment close to Regents Park. This apartment is beautifully presented and is perfect for professional sharers looking for a centrally located property with wonderful transport links.

Ideal for shares or working professionals

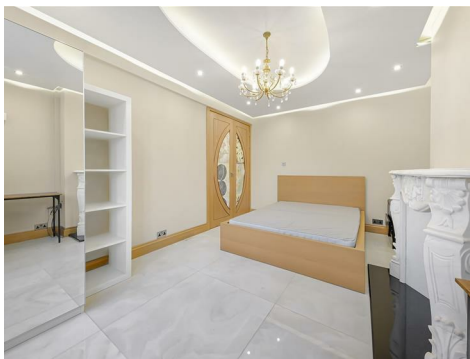
Townshend Court

NW8 6LB

£3,500 Per Month

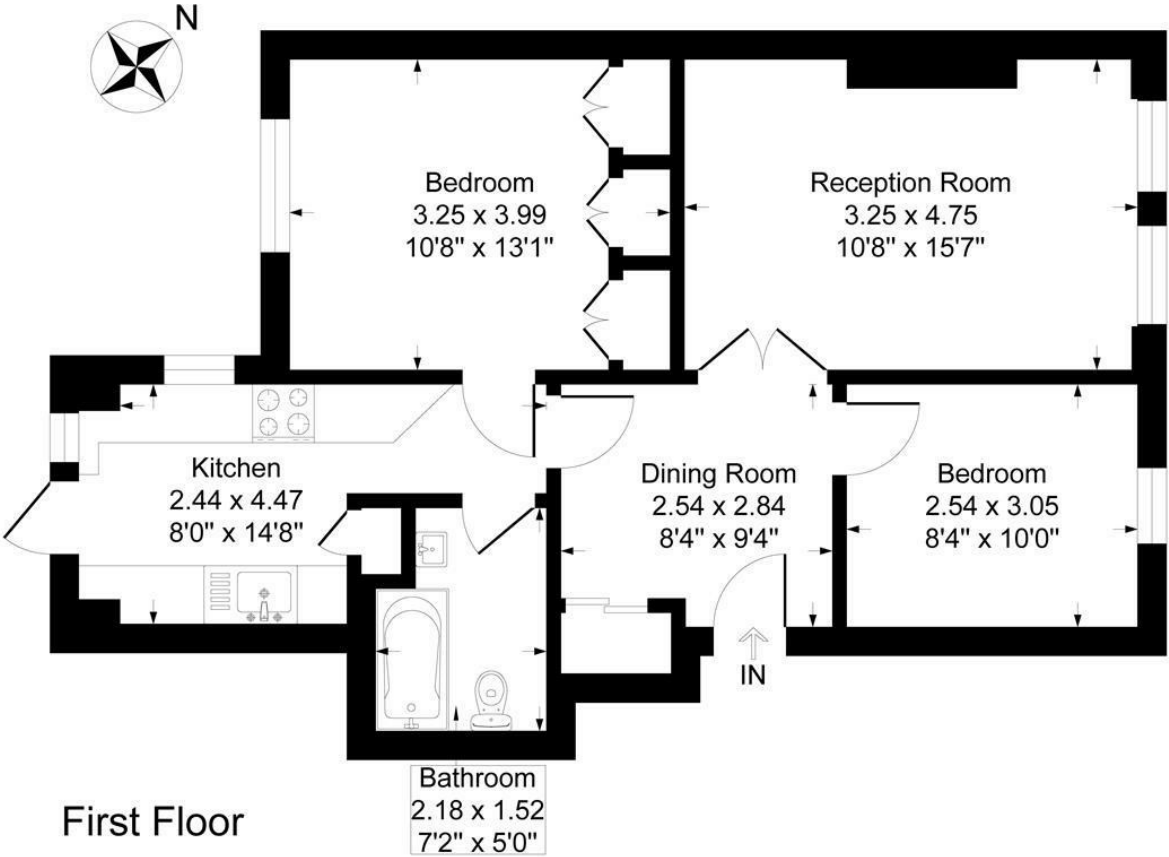
Subject to Contract

FOXGREGORY



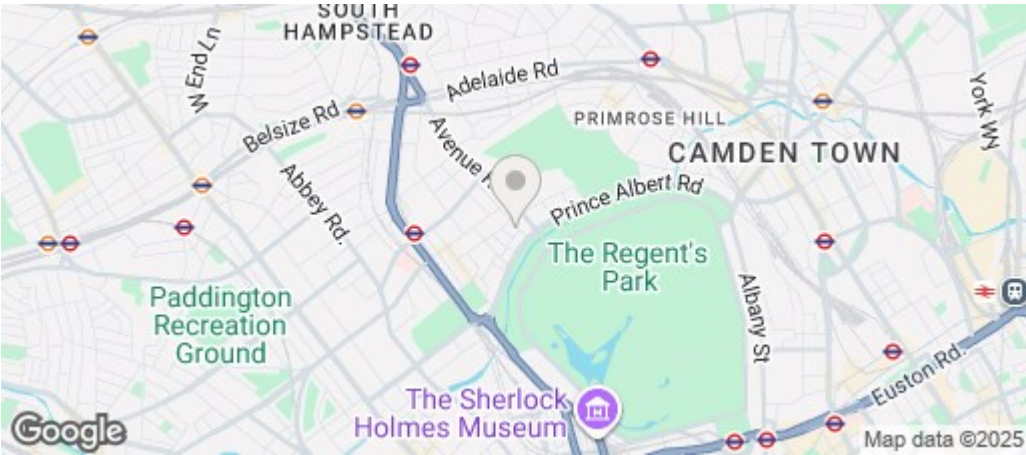
Townshend Court, Townshend Road, NW8

Approximate Gross Internal Floor Area = 60.0 sq m / 646 sq ft



First Floor

Illustration for identification purposes only, measurements are approximate, not to scale.



Energy Efficiency Rating		
	Current	Potential
Very energy efficient - lower running costs		
(92 plus) A		
(81-91) B		
(69-80) C		
(55-68) D		
(39-54) E		
(21-38) F		
(1-20) G		
Not energy efficient - higher running costs		
England & Wales		EU Directive 2002/91/EC