



Discover this charming one-bedroom apartment set on the raised ground floor of a well-maintained, portered building in the heart of St John's Wood. Just moments from the vibrant High Street and the Jubilee Line underground station, this residence offers easy access to boutique shops, cafes, and excellent transport links to Camden Market, Regent's Park, and Baker Street.

For more details or to arrange a viewing, please get in touch.

Grove End Road

NW8 9LN

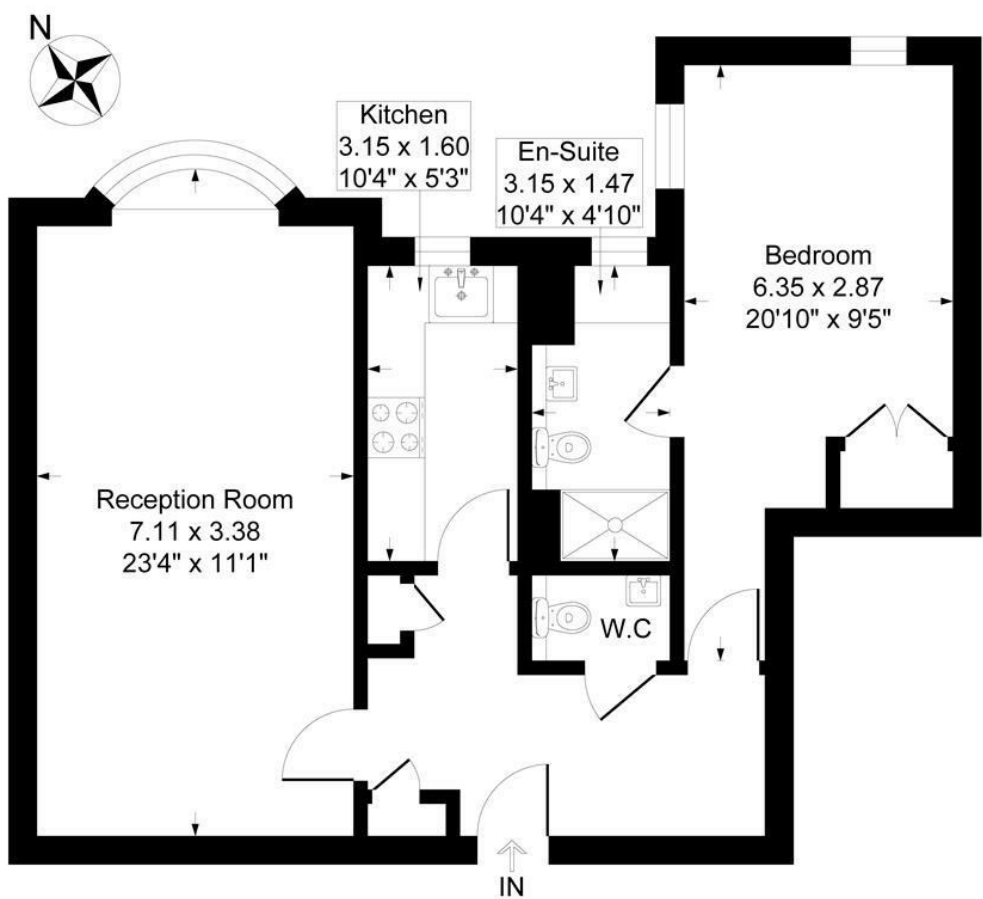
£675 Per Week

Subject to Contract

FOXGREGORY

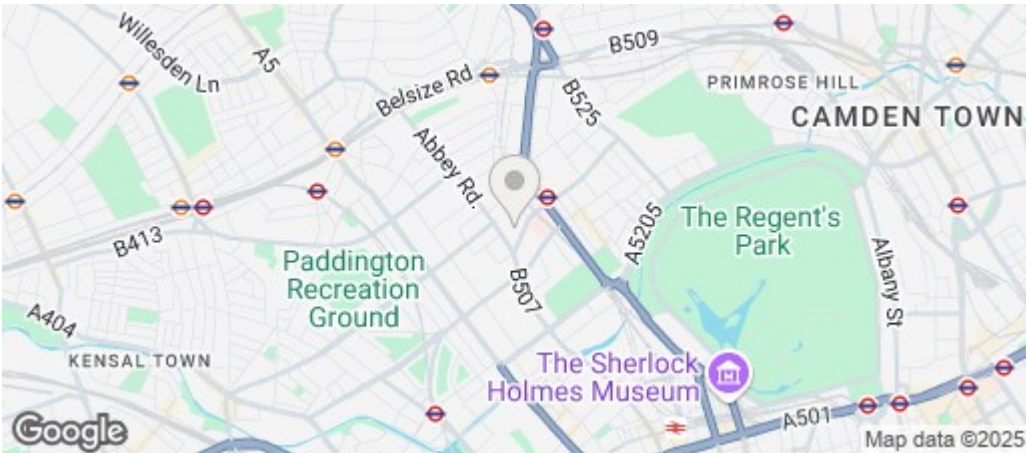


Grove End Gardens, Grove End Road London, NW8
Approximate Gross Internal Floor Area = 61.0 sq m / 657 sq ft



Ground Floor

Illustration for identification purposes only, measurements are approximate, not to scale.



Energy Efficiency Rating		
	Current	Potential
Very energy efficient - lower running costs		
(92 plus) A		
(81-91) B		
(69-80) C		
(55-68) D		
(39-54) E		
(21-38) F		
(1-20) G		
Not energy efficient - higher running costs		
England & Wales		EU Directive 2002/91/EC