



Stylish One-Bedroom Apartment in Grove End Gardens, St John's Wood

Positioned on the third floor of a highly regarded purpose-built mansion block, this well-presented one-bedroom apartment offers comfortable living with the added benefit of communal heating and hot water included in the rent.

Grove End Gardens is a secure and sought-after development with a 24-hour concierge, beautifully maintained communal gardens, and residents' parking available on a first-come, first-served basis.

Ideally located just moments from the boutique shops and cafés of St John's Wood High Street, and within easy reach of St John's Wood Underground Station (Jubilee Line), the property offers excellent connectivity and lifestyle convenience. Please call for further details.

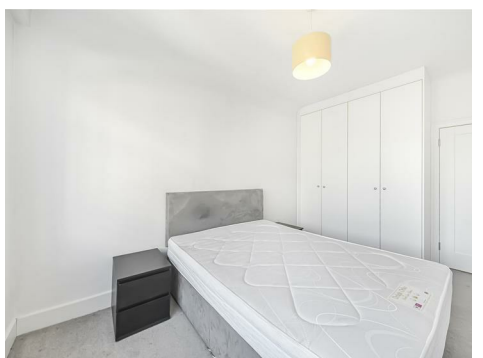
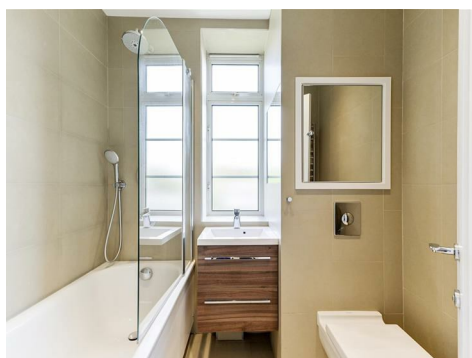
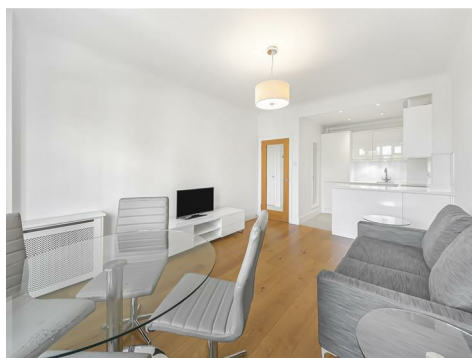
Grove End Road

NW8 9LS

£610 Per Week

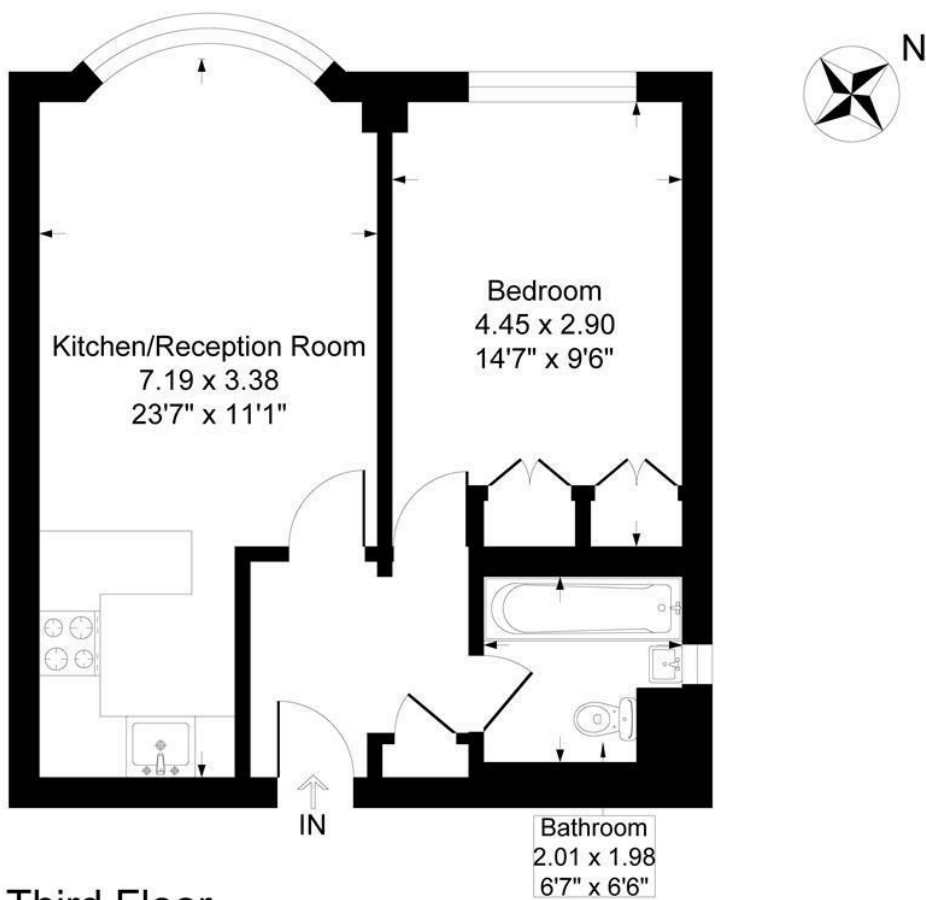
Subject to Contract

FOXGREGORY



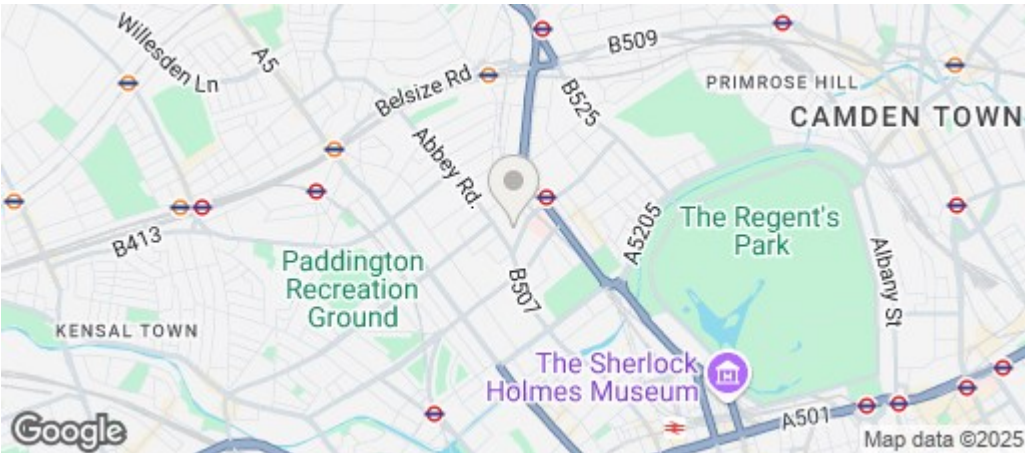
Grove End Gardens, Grove End Road, London, NW8

Approximate Gross Internal Floor Area = 44.4 sq m / 478 sq ft



Third Floor

Illustration for identification purposes only, measurements are approximate, not to scale.



Energy Efficiency Rating		
	Current	Potential
Very energy efficient - lower running costs		
(92 plus) A		
(81-91) B		
(69-80) C		
(55-68) D		
(39-54) E		
(21-38) F		
(1-20) G		
Not energy efficient - higher running costs		
	70	
England & Wales	EU Directive 2002/91/EC	