



Newly renovated two double bedroom apartment within easy reach of Regents Park. This spacious and bright, second floor property is perfect for anyone who is looking to work from home and enjoy excellent transport links across the city.

A bright two double bedroom apartment located on the second floor overlooking communal gardens. The apartment is within a stones throw of the open space of Regents Park and within a short walk of the fashionable St Johns Wood high street with St Johns Wood tube station nearby. Early viewing is a must.

Charlbert Court

NW8 7BY

£543 Per Week

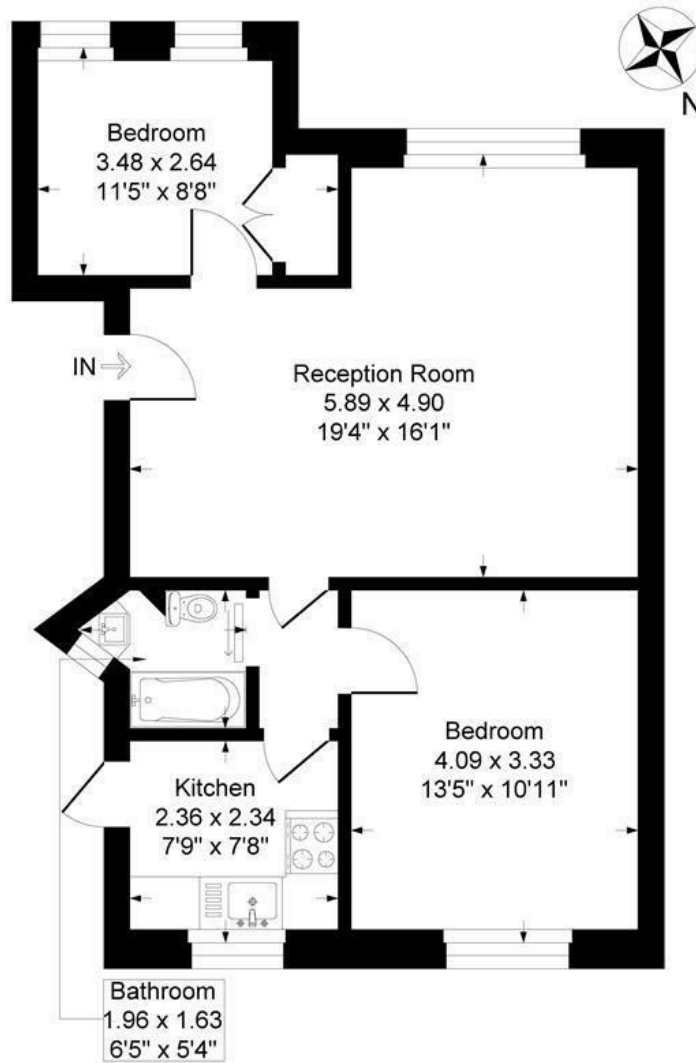
Subject to Contract

# FOXGREGORY

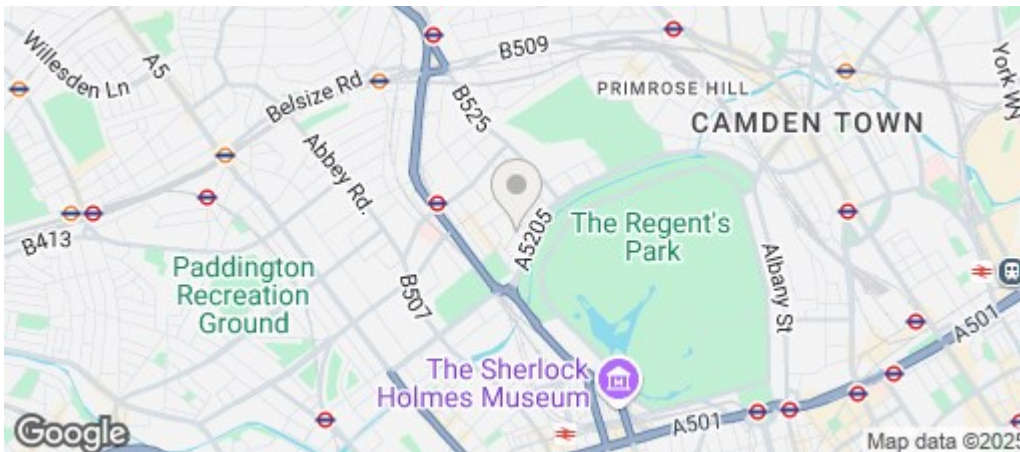


## Charlbert Court, Charlbert Street, London, NW8

Approximate Gross Internal Floor Area = 59.0 sq m / 635 sq ft



Second Floor



Energy Efficiency Rating		
	Current	Potential
Very energy efficient - lower running costs		
(92 plus) <b>A</b>		
(81-91) <b>B</b>		
(69-80) <b>C</b>		
(55-68) <b>D</b>		
(39-54) <b>E</b>		
(21-38) <b>F</b>		
(1-20) <b>G</b>		
Not energy efficient - higher running costs		
	45	80
<b>England &amp; Wales</b>	EU Directive 2002/91/EC	