



Modern One Bedroom Apartment in Grove End Gardens, St John's Wood

Located in a highly regarded purpose-built block, this recently refurbished one-bedroom apartment offers stylish living in the heart of St John's Wood. The property features a spacious reception room with wooden flooring, an open-plan fully fitted kitchen, a contemporary bathroom, and a double bedroom with built-in wardrobes.

Residents benefit from 24-hour concierge service, lift access, and well-maintained communal gardens. Conveniently positioned just a short walk from St John's Wood Underground Station, this apartment is ideal for professionals seeking comfort and convenience.

Heating and hot water are included in the rent.

Available from 21st May 2025
Offered furnished
Council Tax Band: D (Westminster)
EPC Rating: D

Grove End Road

NW8 9LX

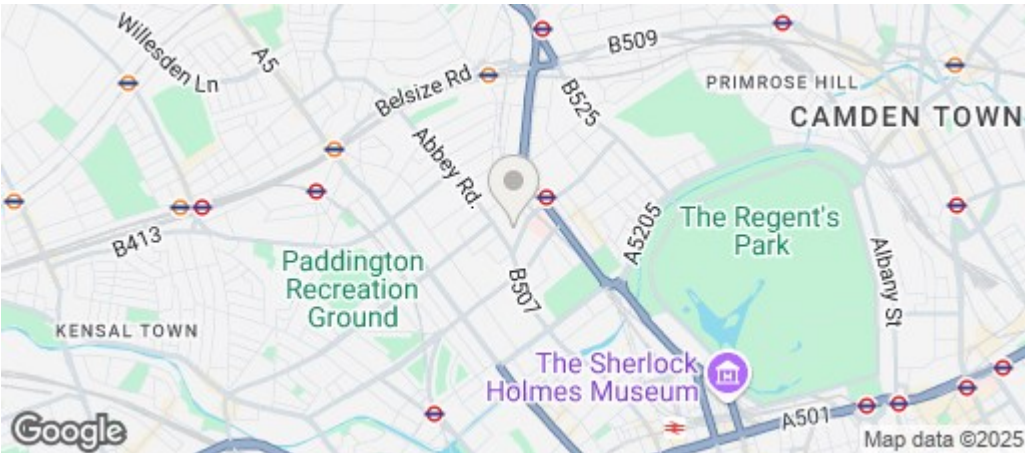
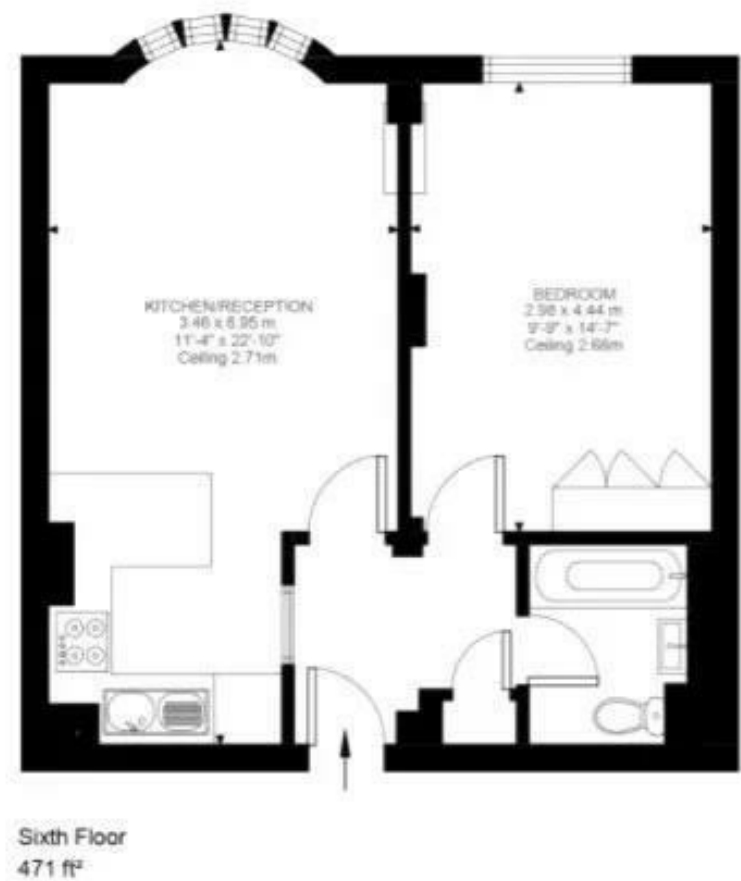
£610 Per Week

Subject to Contract

FOXGREGORY



FOXGREGORY



Energy Efficiency Rating		
	Current	Potential
Very energy efficient - lower running costs		
(92 plus) A		
(81-91) B		
(69-80) C		
(55-68) D	61	
(39-54) E		
(21-38) F		
(1-20) G		
Not energy efficient - higher running costs		
England & Wales	EU Directive 2002/91/EC	