



Luxurious 3 bedroom, 3 bathroom flat to rent in the heart of St Johns Wood. Boydell Court is a fully gated complex, with 24-hour concierge. Other amenities include electric car charging, widespread CCTV security, designated passenger and service lifts and communal gardens. Pet friendly.

Contact us today to arrange a viewing.

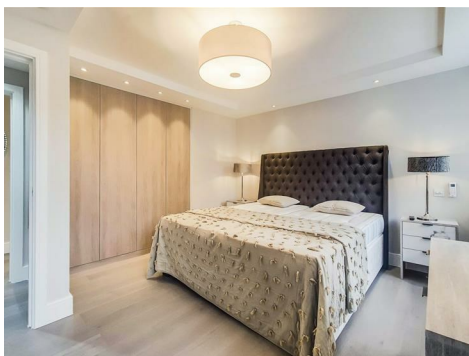
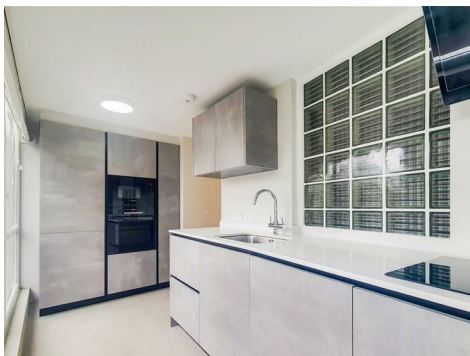
St. Johns Wood Park

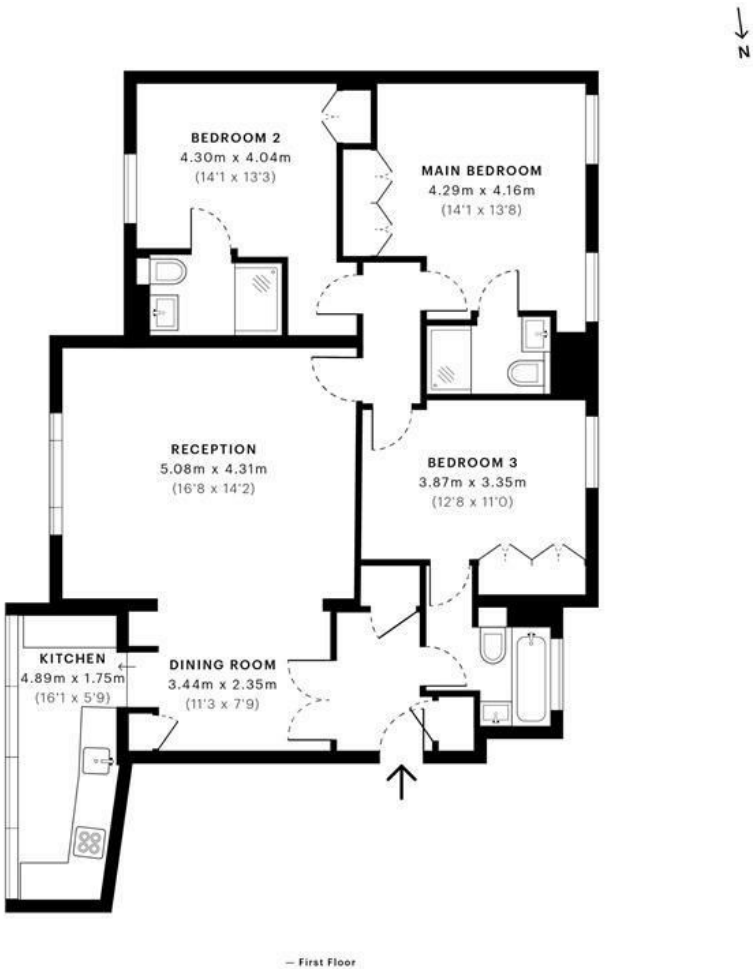
NW8 6NL

£1,300 Per Week

Subject to Contract

FOXGREGORY



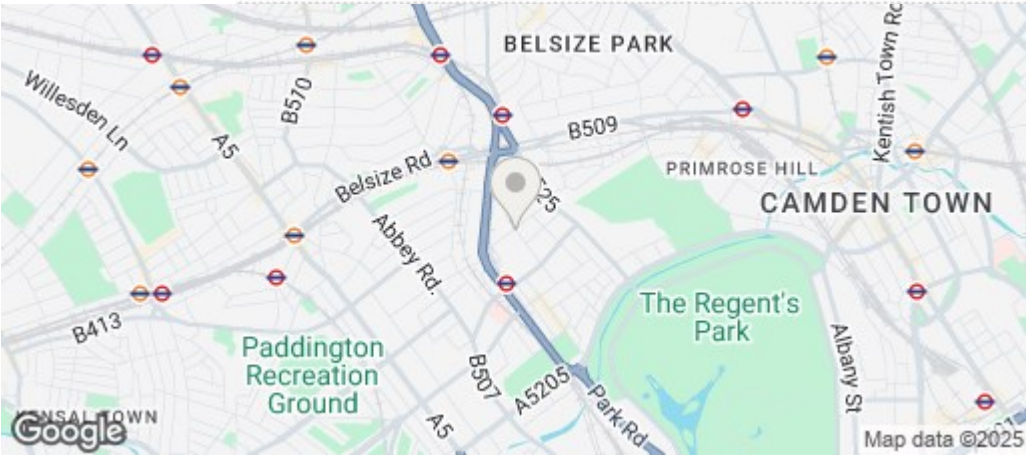


GROSS INTERNAL AREA (GIA)
The footprint of the property
100.69 sqm / 1083.82 sqft

NET INTERNAL AREA (NIA)
Excludes walls and external features
Includes washrooms, restricted head height
92.79 sqm / 998.78 sqft

EXTERNAL STRUCTURAL FEATURES
Balconies, terraces, verandas etc.
0.00 sqm / 0.00 sqft

RESTRICTED HEAD HEIGHT
Limited use area under 1.5 m
0.00 sqm / 0.00 sqft



Energy Efficiency Rating		
	Current	Potential
Very energy efficient - lower running costs		
(92 plus) A		
(81-91) B		
(69-80) C		
(55-68) D		
(39-54) E		
(21-38) F		
(1-20) G		
Not energy efficient - higher running costs		
England & Wales	EU Directive 2002/91/EC	