



A superb sixth floor penthouse apartment in a prestigious mansion block offers fabulous views over Regents Park.

The penthouse is set over 2114 ST FT. It comprises a large dual aspect reception/dining room benefiting from a south-facing private balcony with magnificent views over Regents Park, a master bedroom with en-suite bathroom, three further bedrooms with en-suite bathrooms, a kitchen, guest bathroom, and a cloakroom. The apartment offers easy access to the famous Lords Cricket Ground, and the open spaces of Regent's Park, along with all the local shops, bars, and restaurants located on St John's Wood High Street.

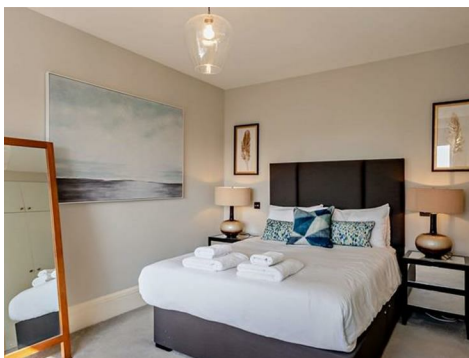
Park Road

NW8 7HY

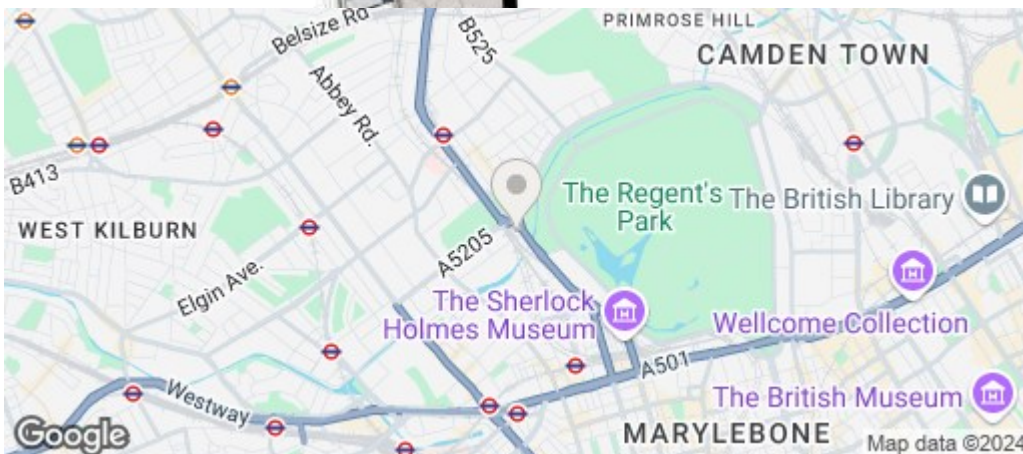
£2,205 Per Week

Subject to Contract

FOXGREGORY



FOXGREGORY



Energy Efficiency Rating		
	Current	Potential
Very energy efficient - lower running costs		
(92 plus) A		
(81-91) B		
(69-80) C		
(55-68) D		
(39-54) E		
(21-38) F		
(1-20) G		
Not energy efficient - higher running costs		
England & Wales	EU Directive 2002/91/EC 