



A newly refurbished spacious five bedroom, five bathroom modern apartment in a portered red brick mansion block with communal gardens, lift and porter. Apsley House is located close to St John's Wood High Street which despite being so close to Central London, St John's Wood has retained a peaceful and village like quality that makes it extremely popular with it's residents. St John's Wood High Street offers a mix of boutique style shops, restaurants, bars and cafes all the while surrounded by the stunning green spaces of Regent's Park and Primrose Hill alike adding to St John's Wood's unwavering appeal. Apsley House is a stone's throw from the American School in London. St John's Wood in Zone 2, is situated on the Jubilee Line which is one stop from Baker Street underground making it easy to reach central London. Oxford Circus and the West End are just 10 minutes away.

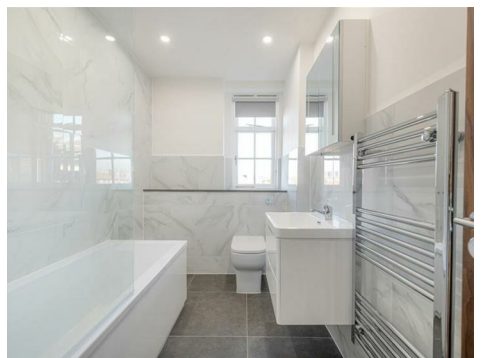
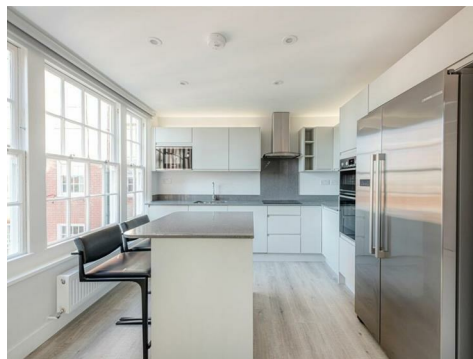
Finchley Road

NW8 0NY

£2,200 Per Week

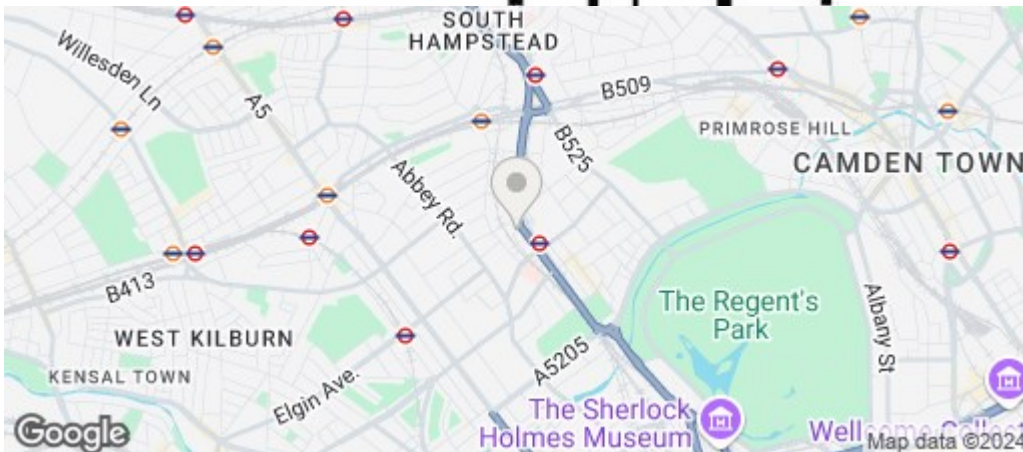
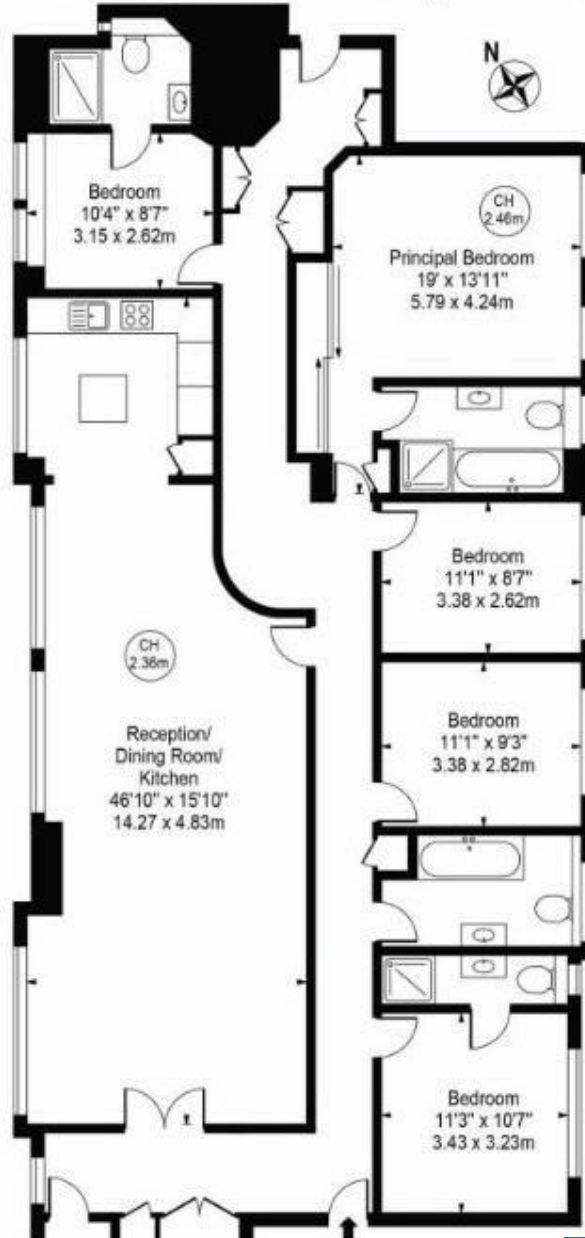
Subject to Contract

FOXGREGORY



Apsley House

Approx. Gross Internal Area 1961 Sq Ft - 182.18 Sq M



Energy Efficiency Rating		
	Current	Potential
Very energy efficient - lower running costs		
(92 plus) A		
(81-91) B		
(69-80) C		
(55-68) D		
(39-54) E		
(21-38) F		
(1-20) G		
Not energy efficient - higher running costs		
England & Wales	EU Directive 2002/91/EC	