



Fox Gregory is proud to bring this bright newly refurbished one bedroom apartment to the rental market.

Situated in a well maintained period property located in the centre of Marylebone, this property boasts a bright reception room, separate fully-fitted kitchen, principle bedroom with built in storage and a family bathroom.

George Street is ideally positioned a stones throw from the local shops and amenities of Marylebone High Street and the village.

Offered fully furnished.

George Street

Marylebone

W1U 7DR

£695 Per Week

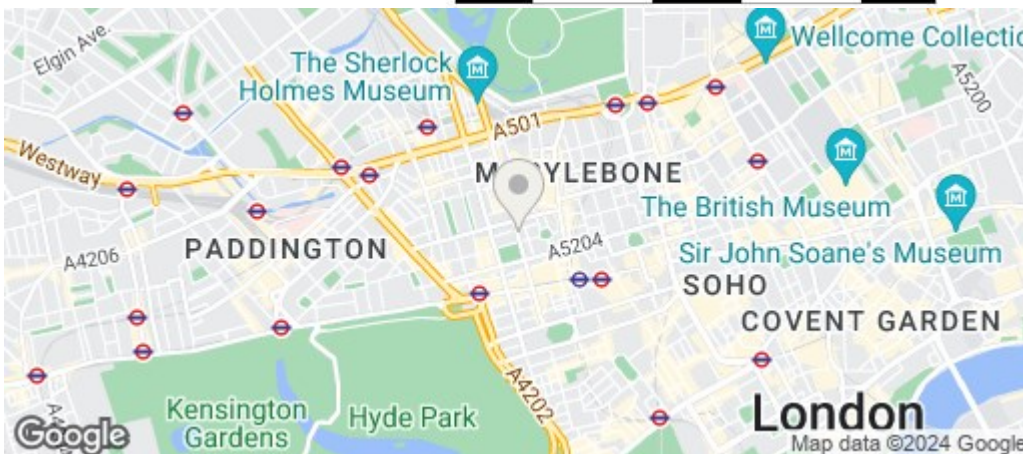
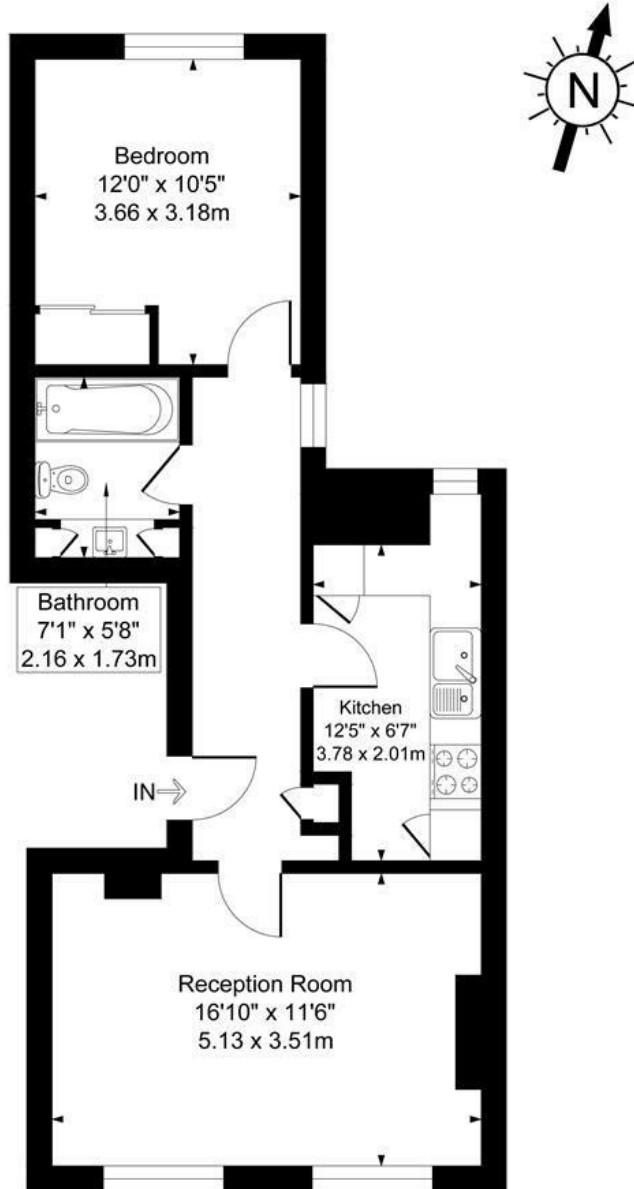
SOLE AGENTS

FOXGREGORY



FOXGREGORY

George Street, Marylebone, London, W1U8
 Approximate Gross Internal Area
 556 sq ft - 52 sq m



Energy Efficiency Rating		
	Current	Potential
Very energy efficient - lower running costs		
(92 plus) A		
(81-91) B		
(69-80) C	74	81
(55-68) D		
(39-54) E		
(21-38) F		
(1-20) G		
Not energy efficient - higher running costs		
England & Wales	EU Directive 2002/91/EC	