



Spectacular four bedroom property set on the 8th floor (with lift), panoramic views and terraces/balconies, with 24/7 concierge and moments from Regents Park. Comprises: 4 double bedrooms, 5 bathrooms, concierge, balcony Off street parking & Pets Allowed.

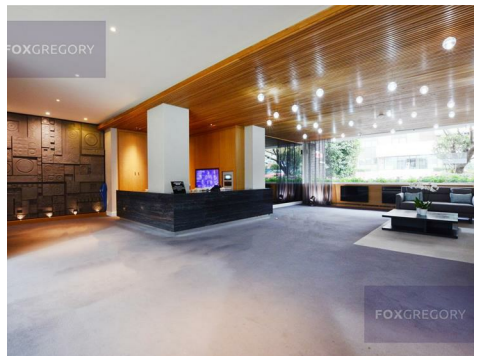
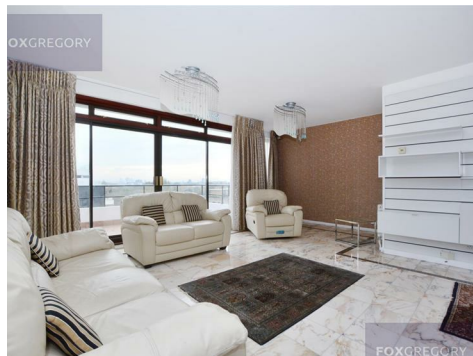
Avenue Road

NW8 7PX

£1,385 Per Week

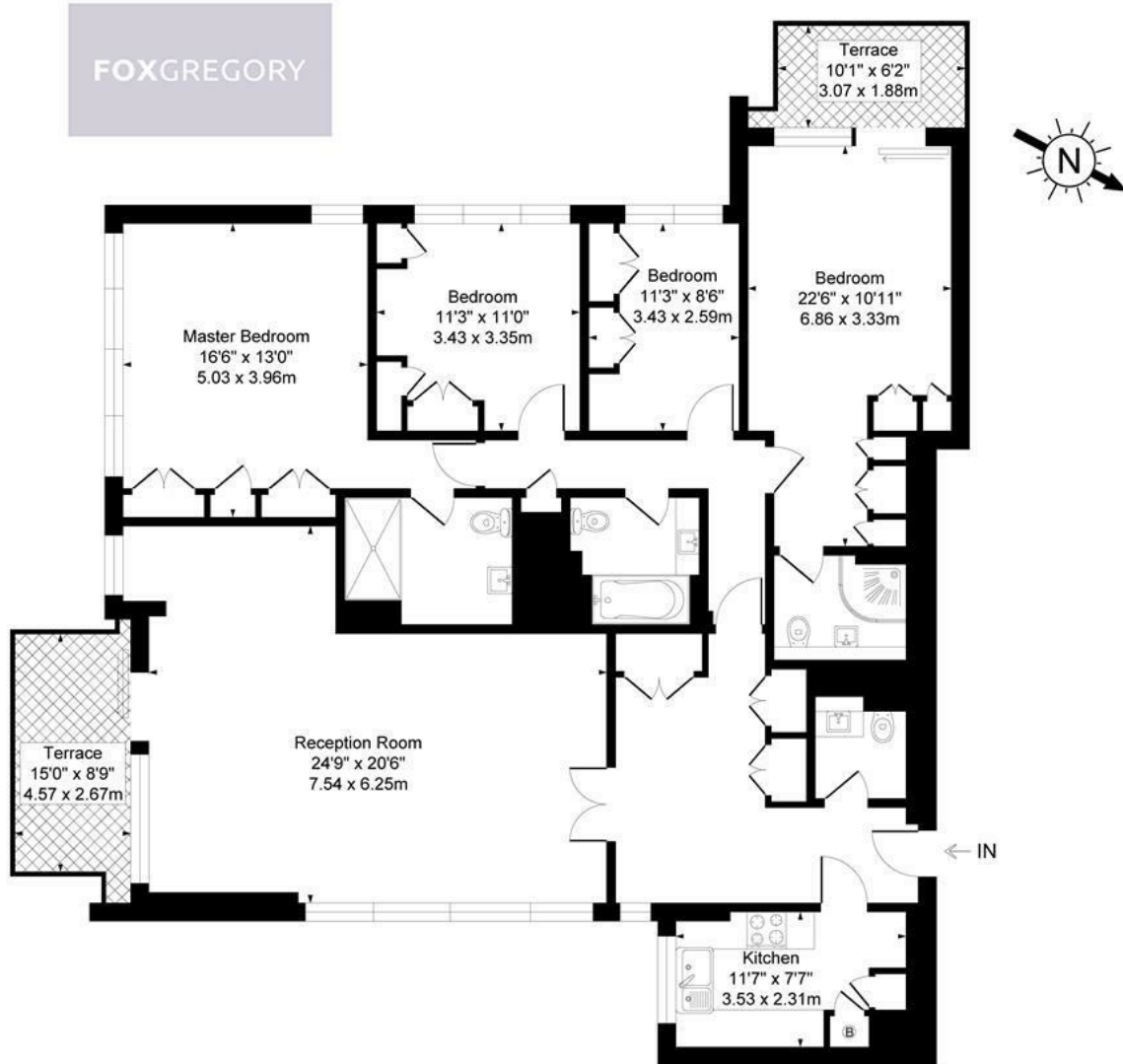
Subject to Contract

FOXGREGORY

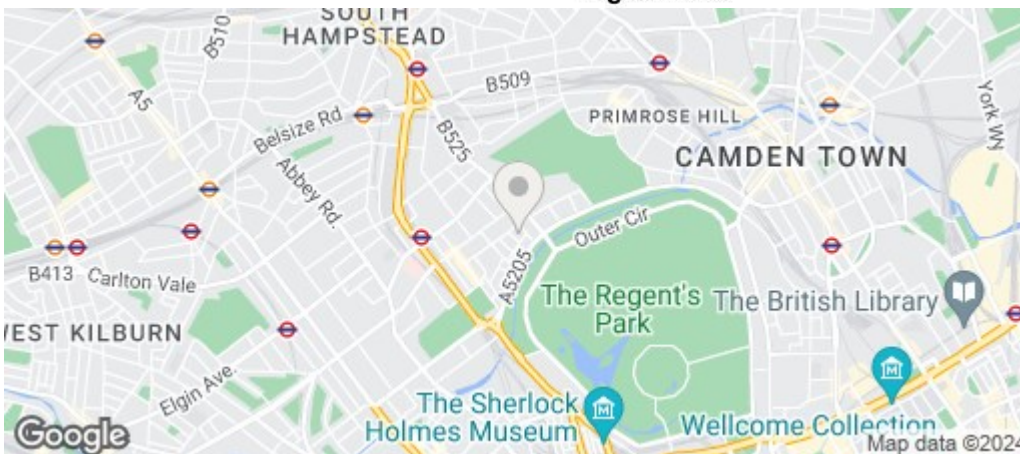


London House, 7-9 Avenue Road, St Jhon's Wood, NW8

Approximate Gross Internal Area
1823 sq ft - 170 sq m



Eighth Floor



Energy Efficiency Rating		
	Current	Potential
Very energy efficient - lower running costs		
(92 plus) A		
(81-91) B		
(69-80) C		
(55-68) D		
(39-54) E		
(21-38) F		
(1-20) G		
Not energy efficient - higher running costs		
	77	78
England & Wales	EU Directive 2002/91/EC	