



Stunning 4 bedroom, 4 bathroom duplex apartment of approximately 1,729 sq ft / 160 sq m situated set over the second and third floors of a refurbished red brick conversion in the very heart of Hampstead Village. The beautifully presented property boasts a stunning reception room and a large eat-in kitchen as well as a study. Features include good storage throughout and luxurious fixtures and furnishings. The shops and amenities of Heath Street are literally at its doorstep. Hampstead Northern Line tube station is approximately 200 metres

Fitzjohn's Avenue

NW3 6NX

£1,695 Per Week

Subject to Contract

FOXGREGORY



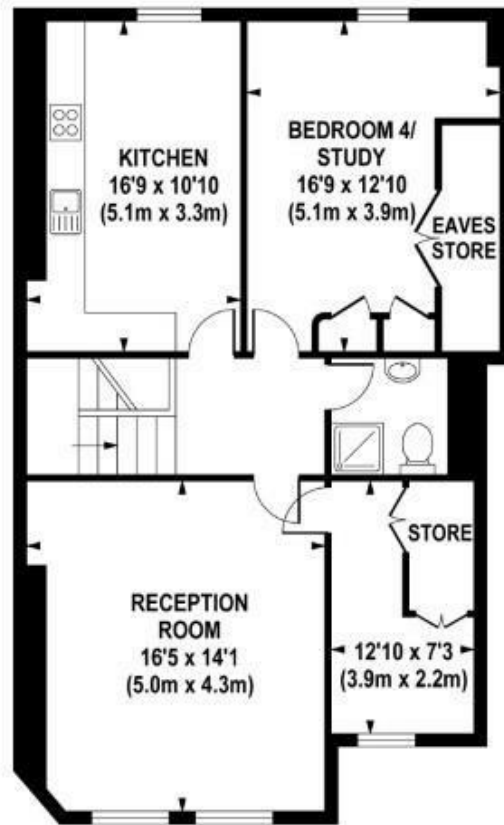
FOXGREGORY

FLAT C, 95 FITZJOHNS AVENUE, NW3

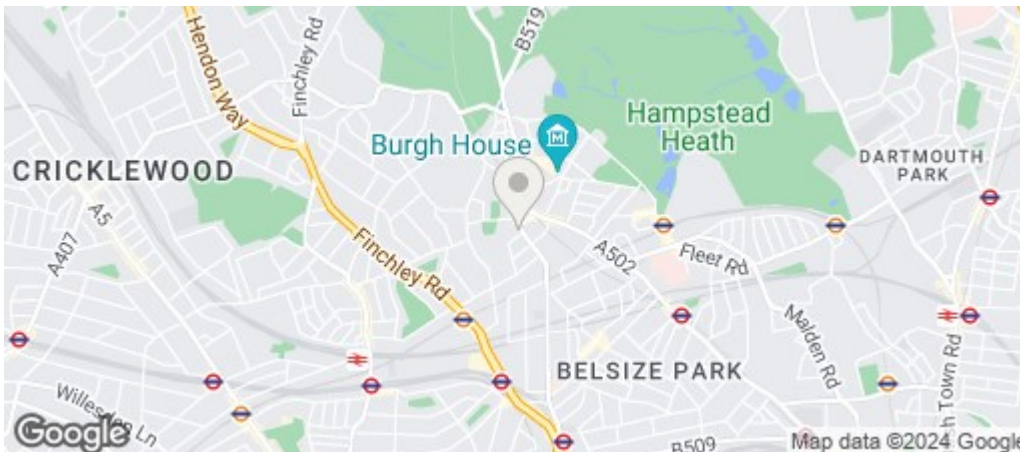
Approximate Gross Internal Area 1729 sq ft / 160.6 sq m



SECOND FLOOR
GROSS INTERNAL
FLOOR AREA 840 SQ FT



THIRD FLOOR
GROSS INTERNAL
FLOOR AREA 889 SQ FT



Energy Efficiency Rating		
	Current	Potential
Very energy efficient - lower running costs		
(92 plus) A		
(81-91) B		
(69-80) C		
(55-68) D		
(39-54) E		
(21-38) F		
(1-20) G		
Not energy efficient - higher running costs		
England & Wales	EU Directive 2002/91/EC	