



Fox Gregory is proud to present this modern and spacious 3 bedroom apartment set in The Polygon on Avenue Road, now available to rent.

This first floor apartment has been finished to a very high standard and offers modern and chic accommodation comprising a large reception with dining area, separate fitted kitchen, three large bedrooms, three bathrooms (two en-suite) and ample storage.

The apartment also features a good size balcony and single garage. The Polygon is located on the North side of Avenue Road, close to Swiss Cottage (Jubilee Line) tube and St John's Wood High Street.
Sole Agent

The Polygon, Avenue Road

NW8 6JB

£1,200 Per Week

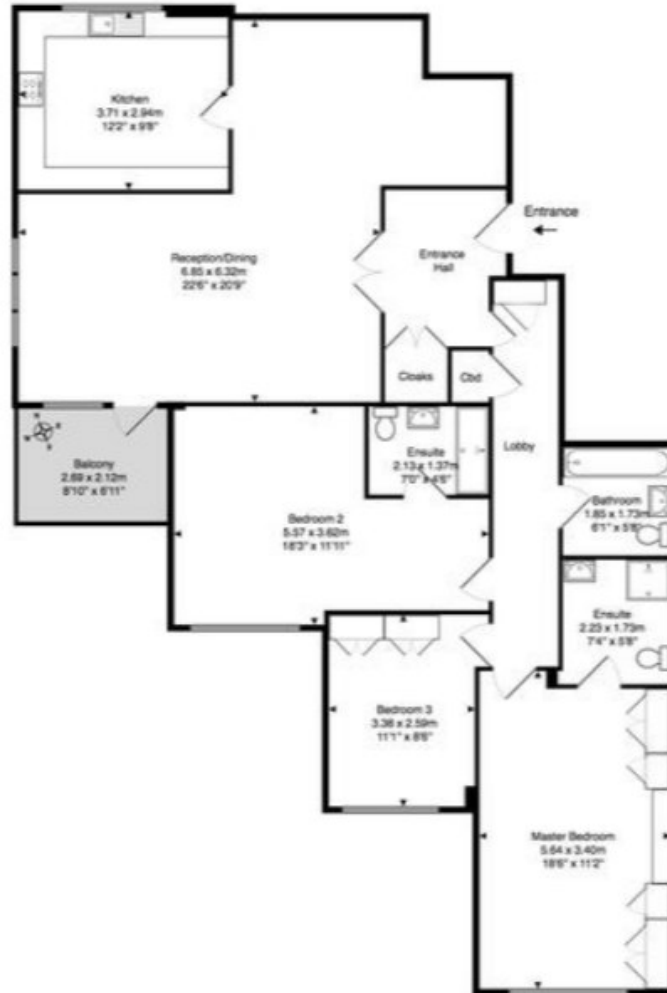
Subject to Contract

SOLE AGENT

FOXGREGORY



The Polygon



Approx. Gross Internal Area: 124.2 m² ... 1336 ft² (excluding balcony)

All measurements and areas are approximate only. Dimensions are not to scale. This plan is for guidance only and must not be relied upon as a statement of fact. © Penruddock Surveys Ltd

