



A newly refurbished three double bedroom (1102 Sq Ft) apartment situated on the fifth floor of this well maintained purpose built block. The property benefits from a modern reception room, three bathrooms, off street parking and 24 hour portorage. Boydell Court is located close to all the amenities of St John's Wood and Swiss Cottage.

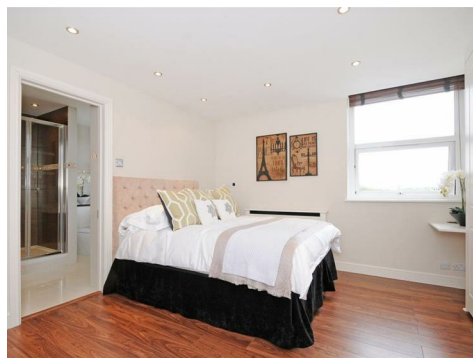
**Boydell Court**

**NW8 6NJ**

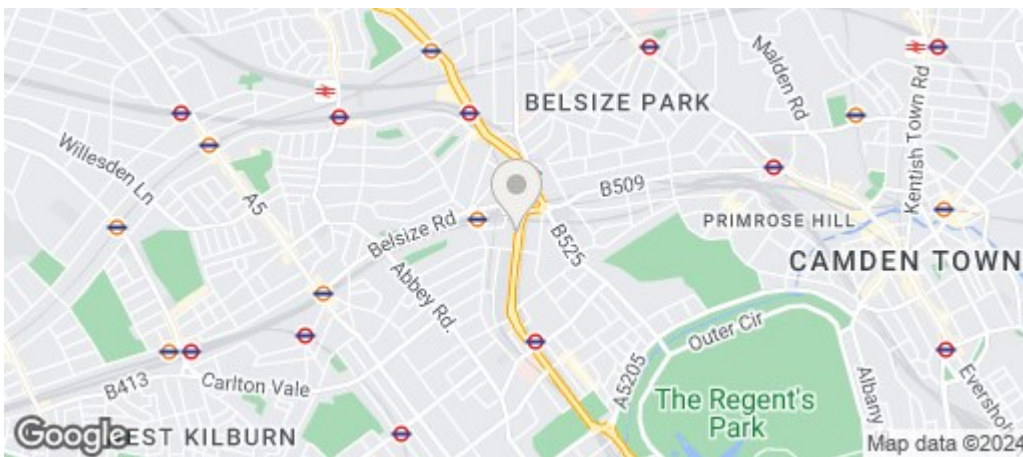
**£1,200 Per Week**

**Subject to Contract**

# FOXGREGORY



# FOXGREGORY



Energy Efficiency Rating		
	Current	Potential
Very energy efficient - lower running costs		
(92 plus) <b>A</b>		
(81-91) <b>B</b>		
(69-80) <b>C</b>		
(55-68) <b>D</b>		
(39-54) <b>E</b>		
(21-38) <b>F</b>		
(1-20) <b>G</b>		
Not energy efficient - higher running costs		
	67	69
<b>England &amp; Wales</b>	EU Directive 2002/91/EC 