



Furnished or unfurnished  
Stunning 4 bedroom apartment on the 1st floor  
Beautiful period conversion with an excellent location  
Bright semi open-plan reception/kitchen  
Offers modern and well equipped kitchen space  
Superb main bedroom with smart en suite shower room  
Additional three well presented and generous bedrooms  
Available with HMO Licence  
Zero deposit available. Long let. Enviably located in the heart of St John's Wood this fabulous 4 bedroom apartment is beautifully presented throughout offering bright interiors.

This property is located close to the shops and amenities of St Johns Wood while the open spaces of Regent's Park are also close by.

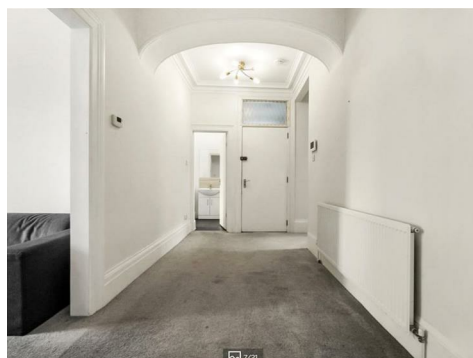
Finchley Road, London

NW8 6EB

£1,350 Per Week

Subject to Contract

# FOXGREGORY

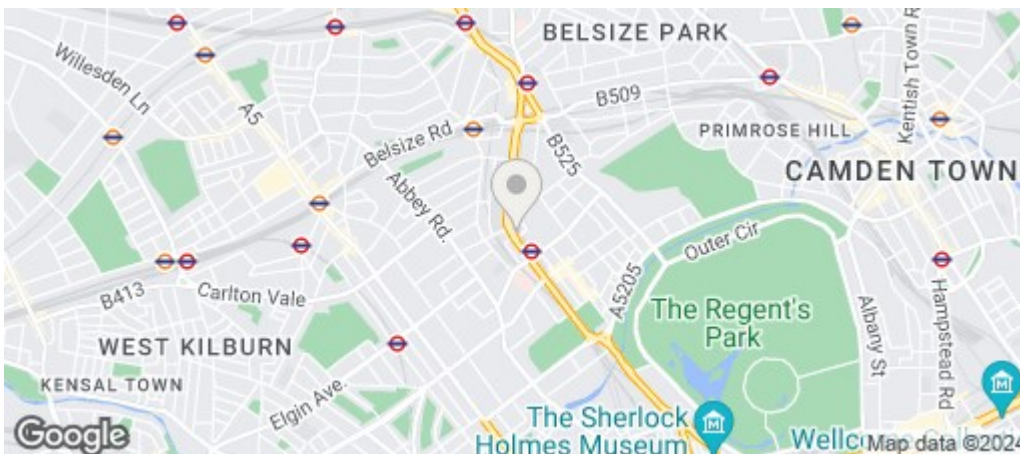


## Finchley Road NW8 6EB

Approx Gross Internal Area = 105.1 sq m / 1131 sq ft



First Floor



Energy Efficiency Rating		
	Current	Potential
Very energy efficient - lower running costs		
(92 plus) <b>A</b>		
(81-91) <b>B</b>		
(69-80) <b>C</b>		
(55-68) <b>D</b>		
(39-54) <b>E</b>		
(21-38) <b>F</b>		
(1-20) <b>G</b>		
Not energy efficient - higher running costs		
<b>England &amp; Wales</b>	EU Directive 2002/91/EC 