



A stunning raised ground floor, one bedroom apartment within a period converted building in Hamilton Terrace, now available for rent.

This property shows off all the original features including high ceilings, floor to ceiling windows, large double bedroom with fitted wardrobes, a fully fitted separate kitchen and a tiled bathroom. Off-street parking is available at additional cost.

The flat is located within walking distance of the American School in London, cosmopolitan St. John's Wood High Street, Lord's Cricket Ground and the shady towpath of the Grand Union Canal. Excellent transport links to the West End, Canary Wharf and the City.

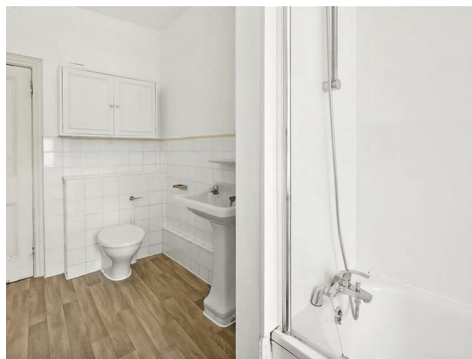
99 Hamilton Terrace

NW8 9QY

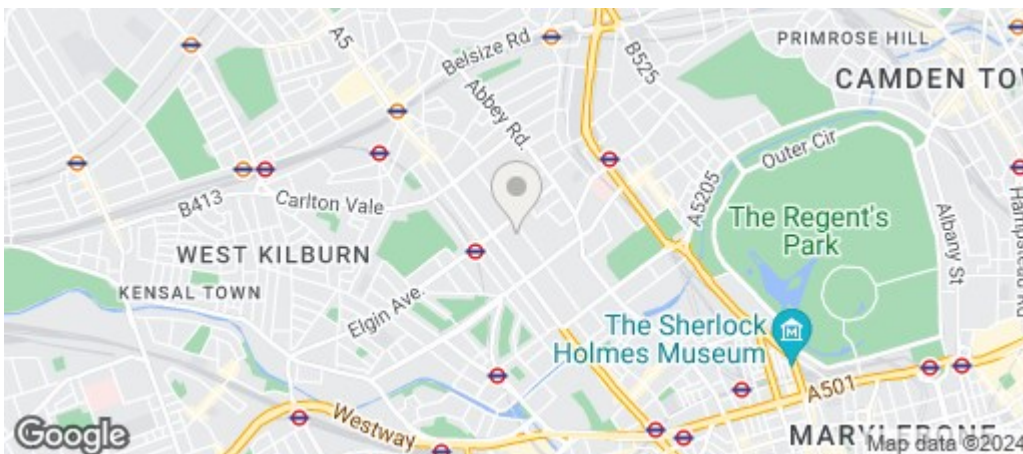
£650 Per Week

Subject to Contract

# FOXGREGORY



# FOXGREGORY



Energy Efficiency Rating		
	Current	Potential
Very energy efficient - lower running costs		
(92 plus) <b>A</b>		
(81-91) <b>B</b>		
(69-80) <b>C</b>		
(55-68) <b>D</b>		
(39-54) <b>E</b>		
(21-38) <b>F</b>		
(1-20) <b>G</b>		
Not energy efficient - higher running costs		
<b>England &amp; Wales</b>	EU Directive 2002/91/EC	