



A stunning 5 bedroom apartment situated within the Boydell Court development. Benefitting from a large reception/dining room, fully integrated kitchen, three double bedrooms, one with en suite shower room, family bathroom, guest cloakroom and 24 hour porter in a secure gated site with communal parking. The apartment is fully air conditioned and decorated to a very high standard. Boydell Court is conveniently located within easy distance to local amenities and transport facilities of St. John's Wood and Swiss Cottage.

Boydell Court , St. Johns
Wood Park

NW8 6NH

£2,495 Per Week

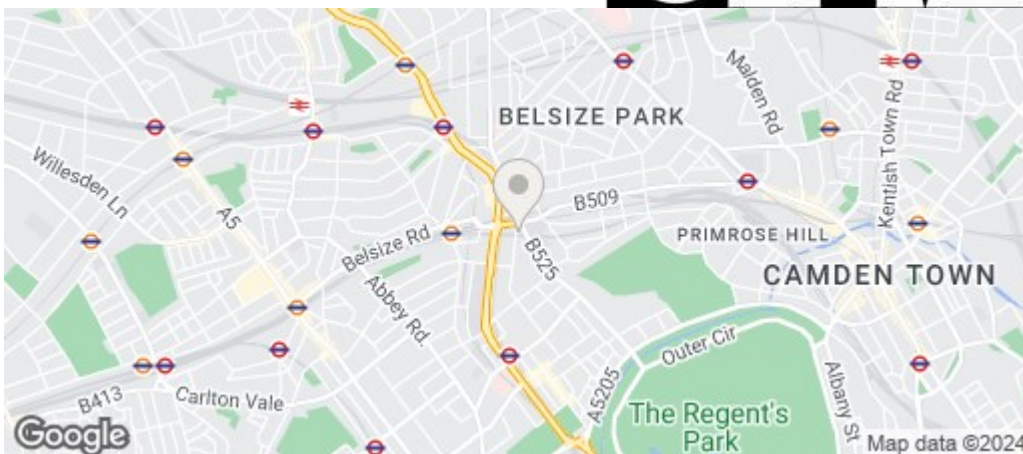
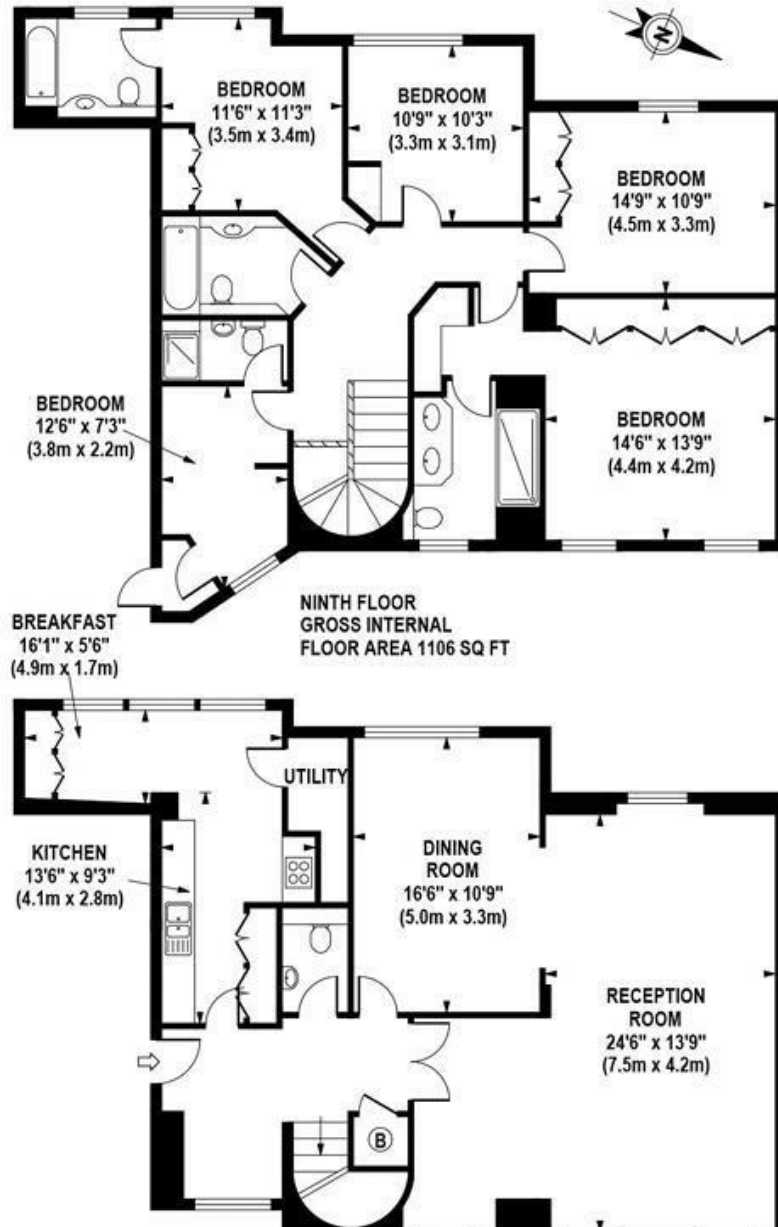
Subject to Contract

FOXGREGORY



BOYDELL COURT

Approximate Gross Internal Area 2164 sq ft / 201.0 sq m



Energy Efficiency Rating		
	Current	Potential
Very energy efficient - lower running costs		
(92 plus) A		
(81-91) B		
(69-80) C		
(55-68) D		
(39-54) E		
(21-38) F		
(1-20) G		
Not energy efficient - higher running costs		
	73	
England & Wales	EU Directive 2002/91/EC	