



Recently refurbished three bedroom, three bathroom, apartment on the seventh floor of approximately 1,055sqft/98sqm, in a popular purpose built portered block in the heart of St. John's Wood. This apartment comprises a separate fully fitted kitchen, a large sized reception, three double bedrooms and three bathrooms. The property further benefits from 24 hour concierge, a lift and parking, Boydell Court is well located for St. John's Wood and Swiss Cottage tubes and amenities of both St. John's Wood High Street and the Finchley Road and The American School. Council Tax Band: F (Camden).

St. Johns Wood Park

NW8 6NL

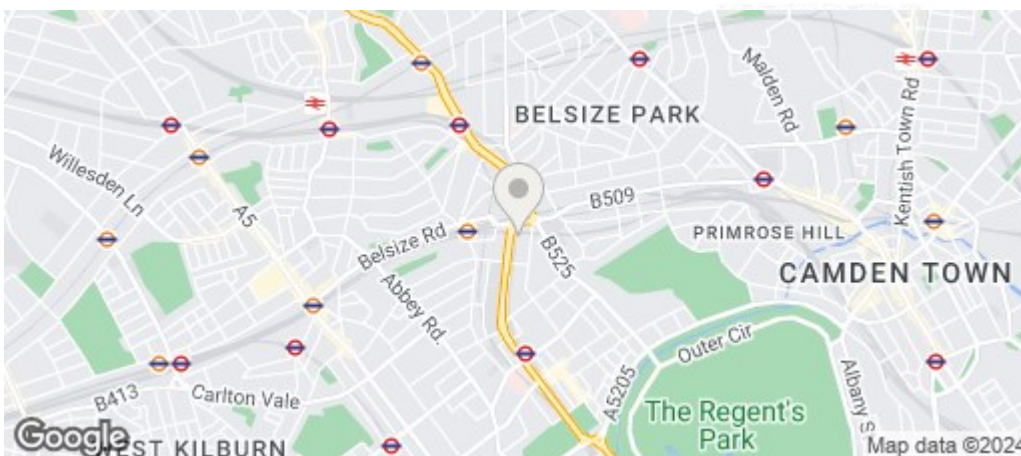
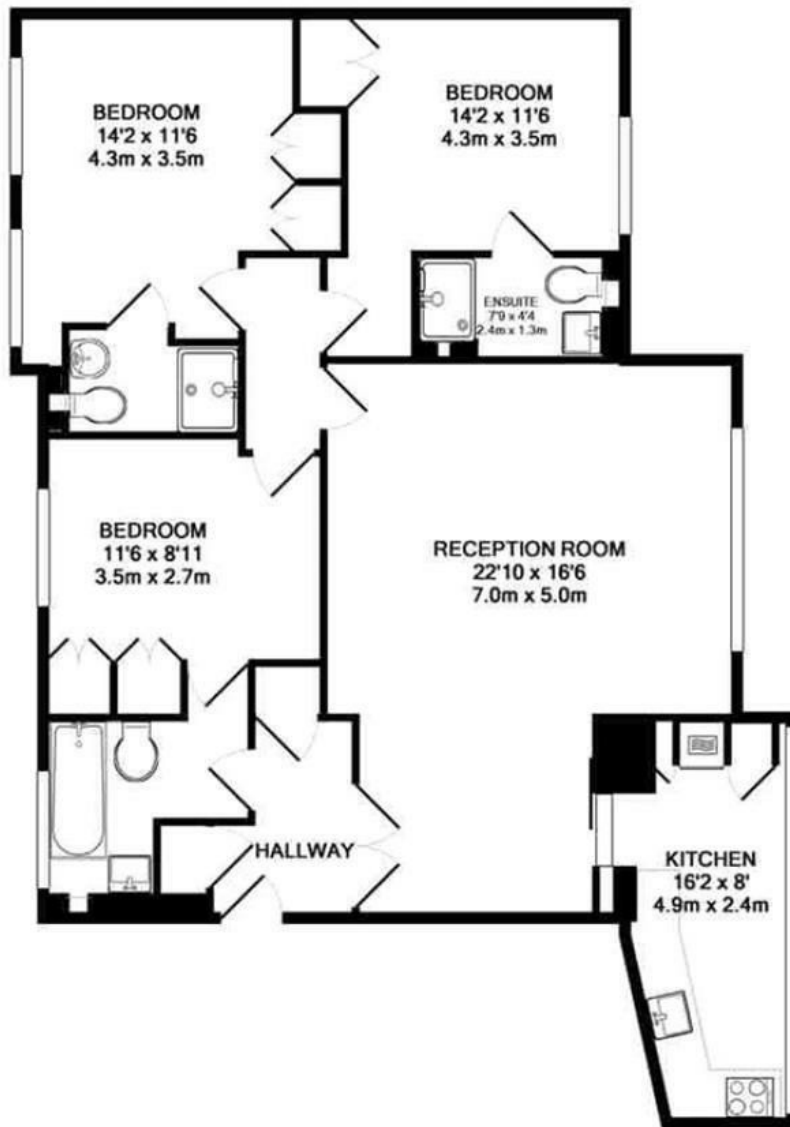
£1,300 Per Week

Subject to Contract

FOXGREGORY



FOXGREGORY



| Energy Efficiency Rating | | |
|---|-------------------------|-----------|
| | Current | Potential |
| Very energy efficient - lower running costs | | |
| (92 plus) A | | |
| (81-91) B | | |
| (69-80) C | 70 | 81 |
| (55-68) D | | |
| (39-54) E | | |
| (21-38) F | | |
| (1-20) G | | |
| Not energy efficient - higher running costs | | |
| England & Wales | EU Directive 2002/91/EC | |