



A bright and spacious newly refurbished three bedroom apartment located on the fourth floor of this 24 hour portered red brick building ideally positioned a stone's throw from Clifton Gardens and the local amenities of Maida Vale.

This fantastic property offers a generous reception room leading onto a dining room and a separate fully fitted kitchen and three double bedrooms with built in storage and a family bathroom.

Further benefits include lift access and close proximity to Maida Vale station. Rent inclusive of seasonal heating and hot water.

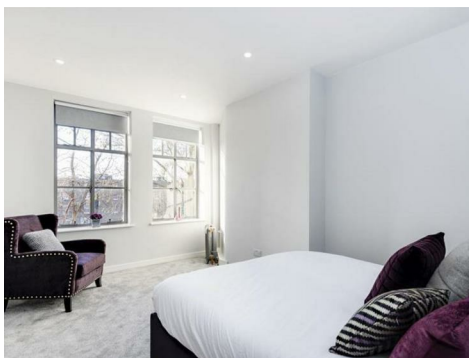
Clive Court, Maida Vale

W9 1SF

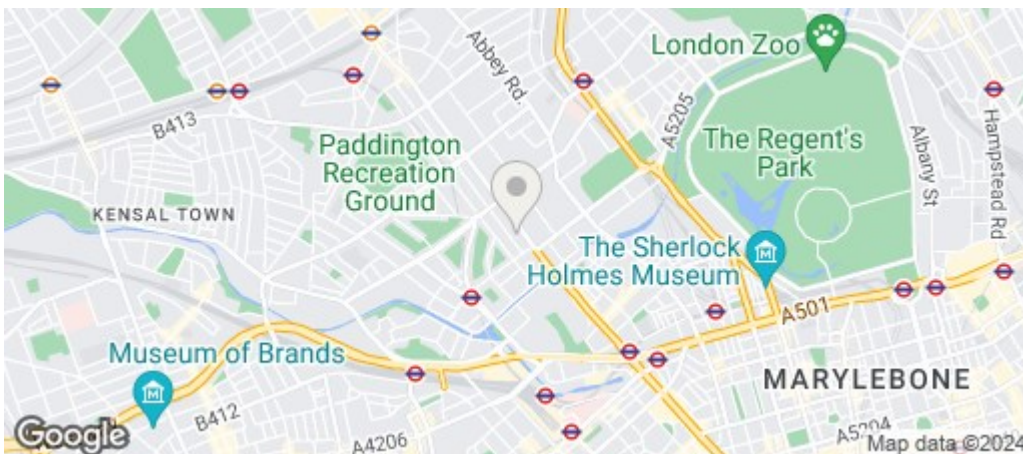
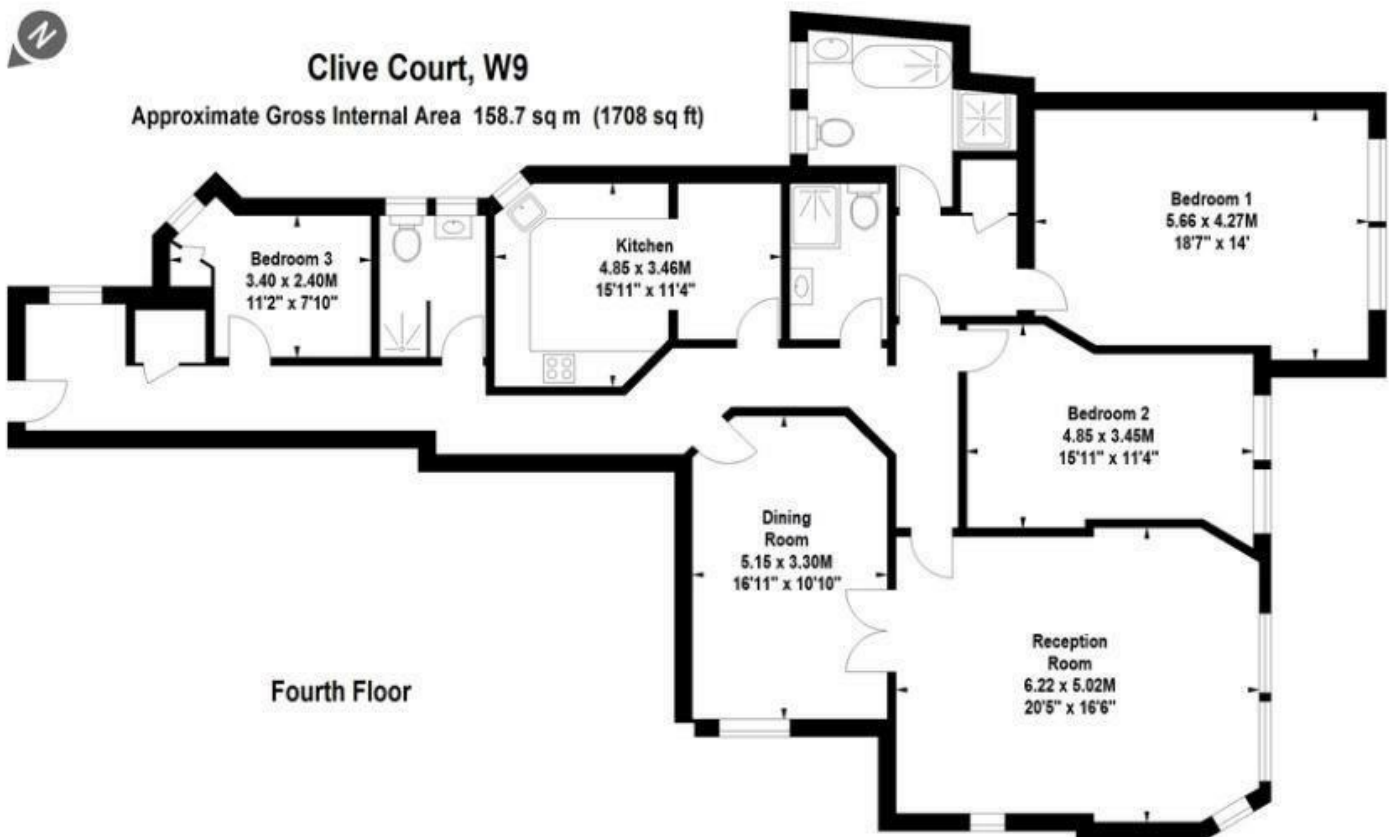
£995 Per Week

Subject to Contract

FOXGREGORY



FOXGREGORY



Energy Efficiency Rating		
	Current	Potential
Very energy efficient - lower running costs		
(92 plus) A		
(81-91) B		
(69-80) C		
(55-68) D		
(39-54) E		
(21-38) F		
(1-20) G		
Not energy efficient - higher running costs		
England & Wales	EU Directive 2002/91/EC	