

foxgregory.co.uk

FOXGREGORY



Fox Gregory is proud to present this exceptional 3-bedroom apartment in one of St John's Wood's most prestigious developments.

Boasting over 1,350 sq feet, and with three bathrooms, a grand reception room, air conditioning and a sunny balcony, this luxurious property is sure to impress. The building also offers 24/7 concierge services and private parking.

Contact us today to lock in your viewing.

SOLE AGENTS

Sheringham, St John's  
Wood Park

NW8 6QY

£1,489 Per Week

Subject to Contract

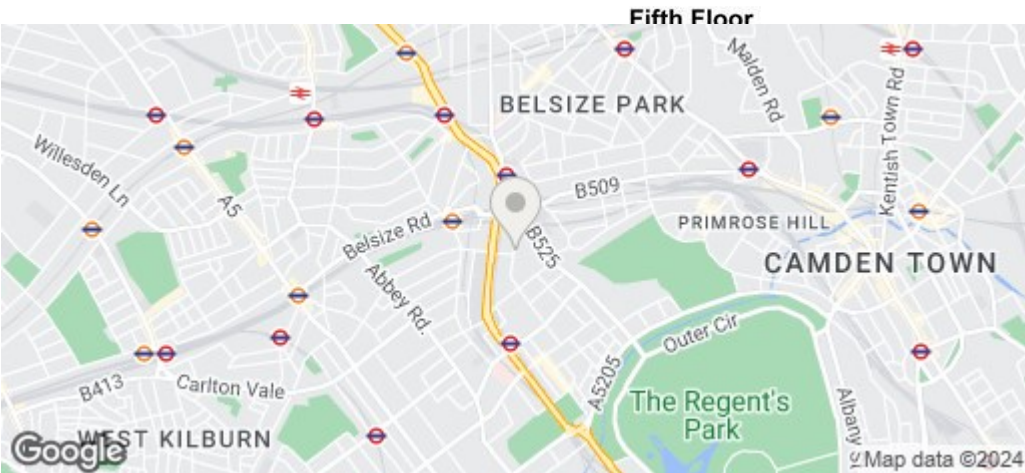
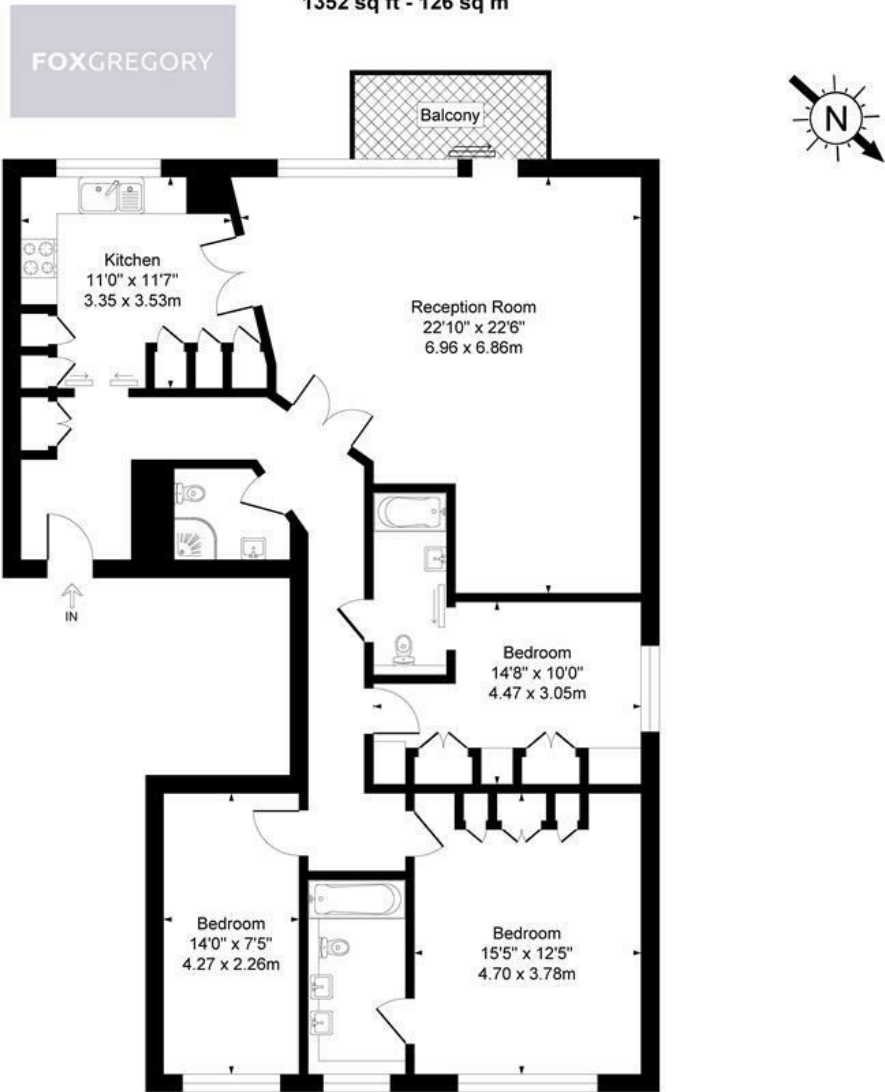
SOLE AGENTS



# FOXGREGORY



Sheringham, St. Johns Wood Park, London NW8 6QY  
Approximate Gross Internal Area  
1352 sq ft - 126 sq m



Energy Efficiency Rating		
	Current	Potential
Very energy efficient - lower running costs		
(92 plus) <b>A</b>		
(81-91) <b>B</b>		
(69-80) <b>C</b>		
(55-68) <b>D</b>		
(39-54) <b>E</b>		
(21-38) <b>F</b>		
(1-20) <b>G</b>		
Not energy efficient - higher running costs		
England & Wales		EU Directive 2002/91/EC