



Set within Regents Park this prestigious block offers a 24-hour concierge, 2nd floor, passenger lift and set within a private road with security. Entering into the well sized hallway the apartment offers a bright reception with wooden floors, a separate fully fitted, and equipped kitchen, a principal bedroom with a luxury bathroom en-suite, a second double bedroom, and a shower room with hand basin and toilet. Ample storage. Nottingham Terrace is very well located on the edge of Regents Park and therefore only a few moments from London's West End giving easy access to Marylebone, Oxford Street, and the numerous Travel Links the area has to offer.

Nottingham Terrace

St Johns Wood

NW1 4QB

£1,245,273

Subject to Contract

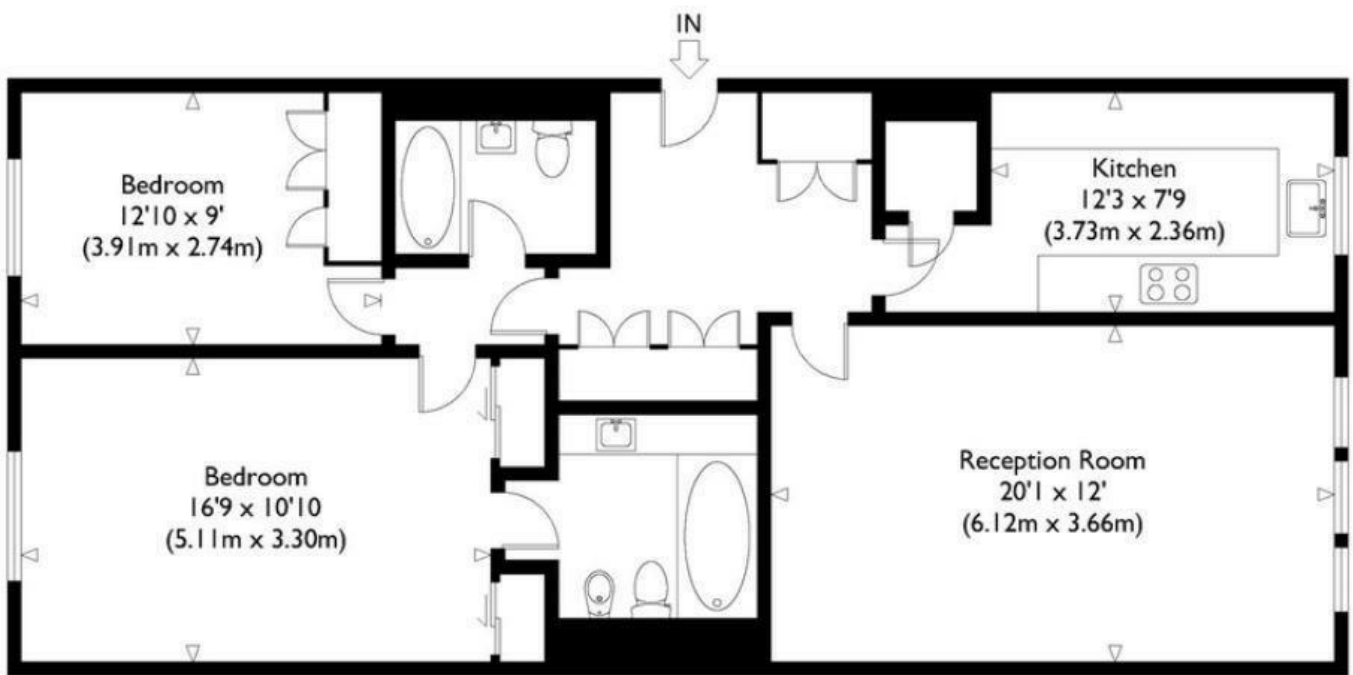
FOXGREGORY



FOXGREGORY

Nottingham Terrace, NW1

Approximate Gross Internal Floor Area : 953 sq ft / 88.5 sq m



Second Floor



Energy Efficiency Rating		
	Current	Potential
Very energy efficient - lower running costs		
(92 plus) A		
(81-91) B		
(69-80) C		
(55-68) D		
(39-54) E		
(21-38) F		
(1-20) G		
Not energy efficient - higher running costs		
	77	84
England & Wales	EU Directive 2002/91/EC	