



Set within Regents Park this prestigious block offers a 24-hour concierge, 2nd floor, passenger lift and set within a private road with security. Entering into the well sized hallway the apartment offers a bright reception with wooden floors, a separate fully fitted, and equipped kitchen, a principal bedroom with a luxury bathroom en-suite, a second double bedroom, and a shower room with hand basin and toilet. Ample storage. Nottingham Terrace is very well located on the edge of Regents Park and therefore only a few moments from London's West End giving easy access to Marylebone, Oxford Street, and the numerous Travel Links the area has to offer.

Nottingham Terrace

NW1 4QB

£1,300,000

Subject to Contract

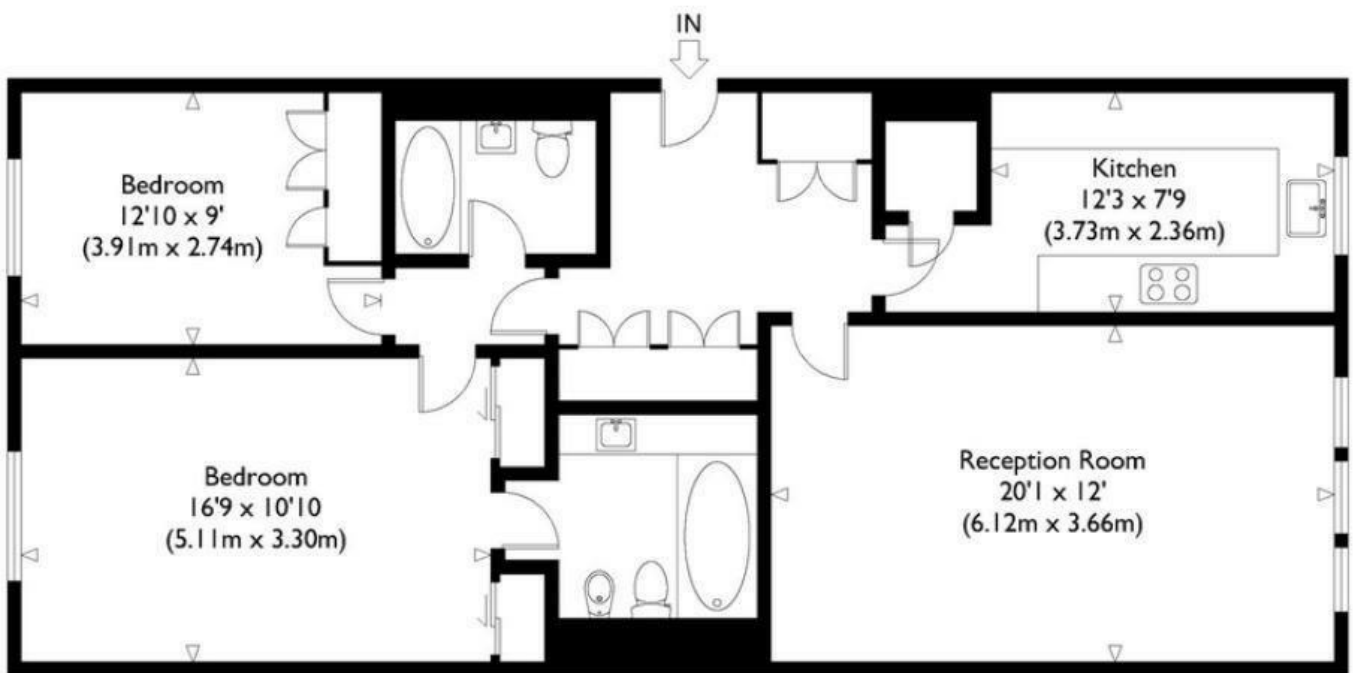
# FOXGREGORY



# FOXGREGORY

## Nottingham Terrace, NW1

Approximate Gross Internal Floor Area : 953 sq ft / 88.5 sq m



Second Floor



Energy Efficiency Rating		
	Current	Potential
Very energy efficient - lower running costs		
(92 plus) <b>A</b>		
(81-91) <b>B</b>		
(69-80) <b>C</b>		
(55-68) <b>D</b>		
(39-54) <b>E</b>		
(21-38) <b>F</b>		
(1-20) <b>G</b>		
Not energy efficient - higher running costs		
	77	84
<b>England &amp; Wales</b>	EU Directive 2002/91/EC	