



A beautiful four bedroom penthouse apartment located in a prestigious mansion block offering fabulous views over Regent's Park. The penthouse is set over 2135 sq ft and comprises a large dual aspect reception/dining room benefiting from a south facing private balcony with magnificent views over Regent's Park, master bedroom with a dressing room and en-suite bathroom with a jacuzzi allowing stunning views over Regent's Park, three further bedrooms with en-suite bathrooms, kitchen, guest bathroom and cloakroom. The apartment offers easy access to the famous Lords Cricket Ground, the open spaces of Regent's Park, along with all the local shops, bars, restaurants located on St John's Wood High Street.

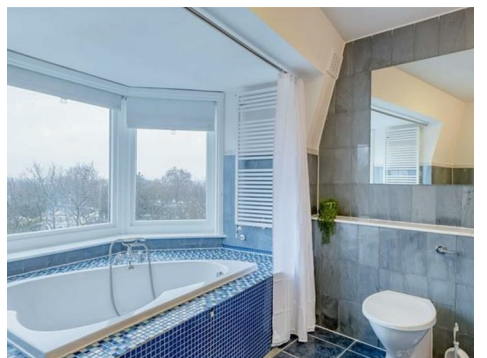
Strathmore Court

NW8 7HY

£2,050 Per Week

Subject to Contract

# FOXGREGORY

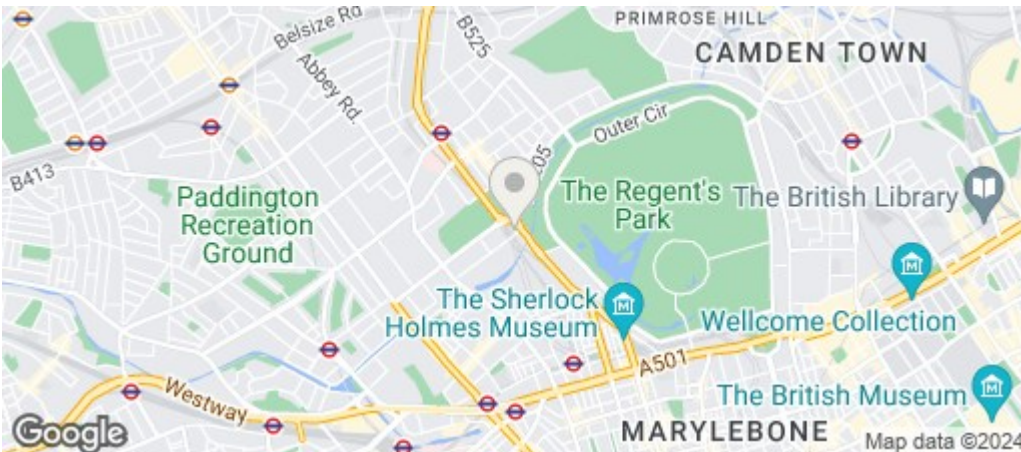


# FOXGREGORY

## STRATHMORE COURT PARK ROAD NW8

APPROX. GROSS INTERNAL AREA \*  
2135 Ft<sup>2</sup> - 198.34 M<sup>2</sup>

Illustration For Identification Only, Not to Scale  
All Calculations include Any/All Areas Under 1.5m Head Height  
\* As Defined by RICS - Code of Measuring Practice



Energy Efficiency Rating		
	Current	Potential
Very energy efficient - lower running costs		
(92 plus) <b>A</b>		
(81-91) <b>B</b>		
(69-80) <b>C</b>		
(55-68) <b>D</b>		
(39-54) <b>E</b>		
(21-38) <b>F</b>		
(1-20) <b>G</b>		
Not energy efficient - higher running costs		
	<b>51</b>	<b>73</b>
<b>England &amp; Wales</b>	EU Directive 2002/91/EC	