



This rare opportunity to acquire a beautiful and spacious penthouse apartment overlooking Central London's skyline.

The apartment is in a desirable portered red brick mansion block in St John's Wood. Offering 1603sqft in floor space and comprises of two double bedrooms, both with en-suite bathrooms, impressive double aspect reception room, eat in kitchen/breakfast room, guest cloakroom, guest W.C, two balconies & a stunning roof terrace with far reaching rooftop views. Additional benefits include passenger lift & a reserved parking space. St John's Wood Court is located opposite London's famous Lord's Cricket with views onto the grounds.

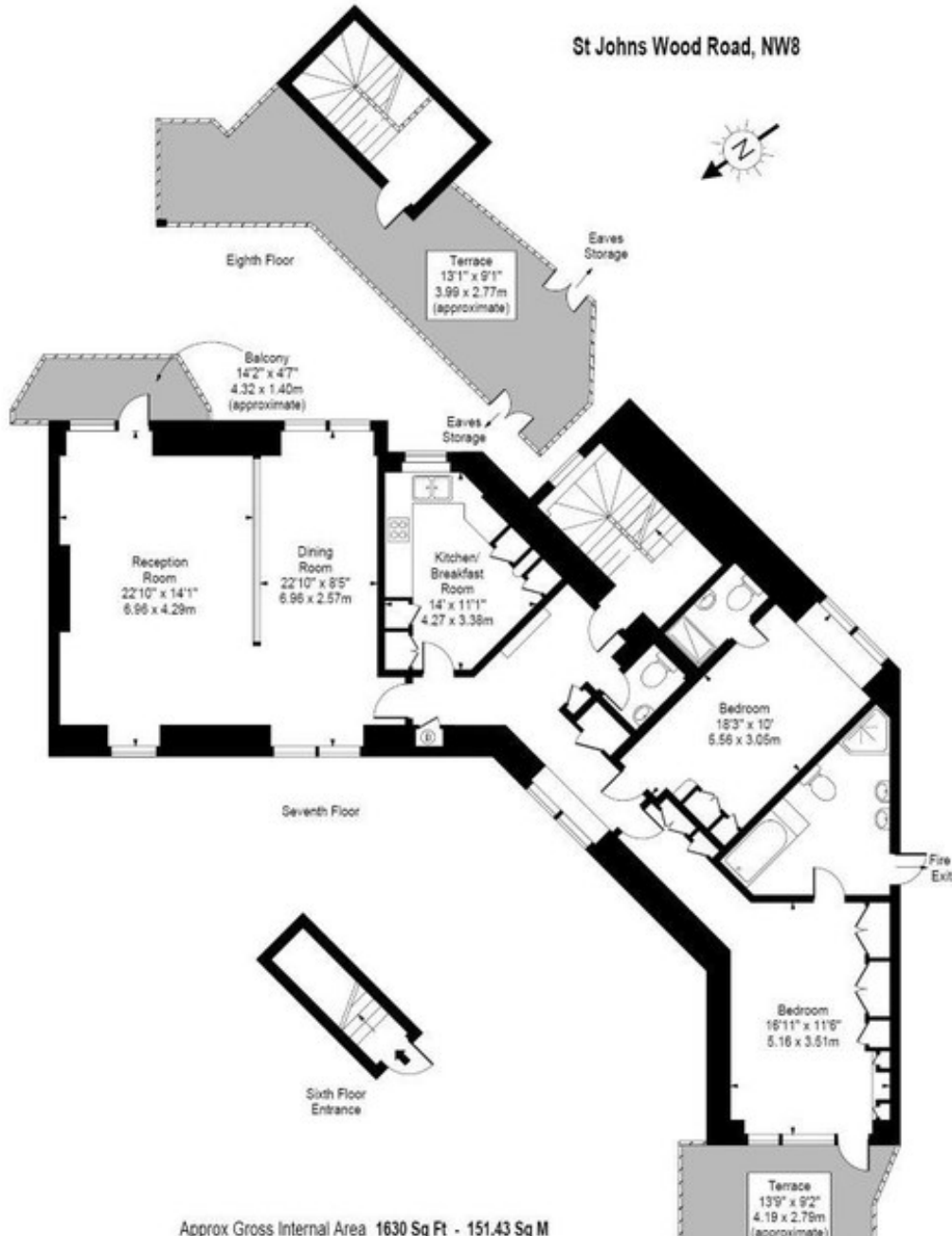
St John's Wood Court

NW8 8QT

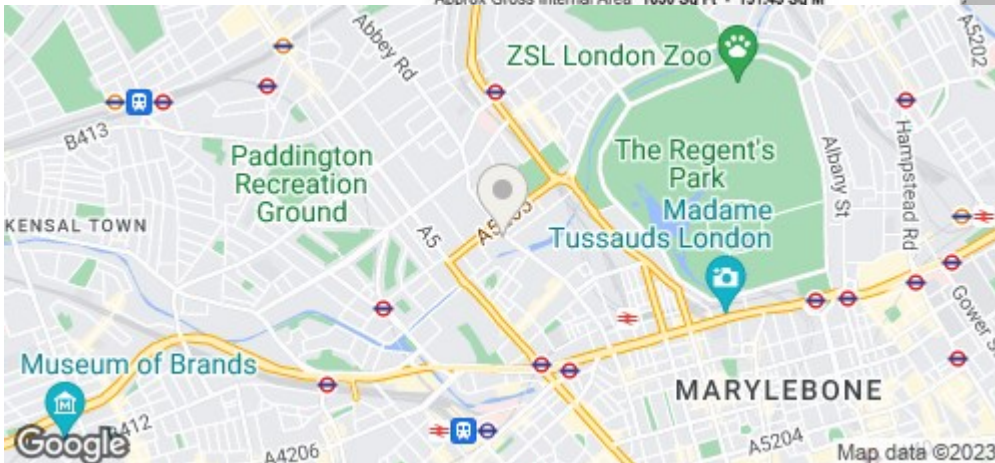
£1,900,000

Subject to Contract

# FOXGREGORY



Approx Gross Internal Area 1630 Sq Ft - 151.43 Sq M



Energy Efficiency Rating		
	Current	Potential
Very energy efficient - lower running costs		
(92 plus) <b>A</b>		
(81-91) <b>B</b>		
(69-80) <b>C</b>		
(55-68) <b>D</b>	62	63
(39-54) <b>E</b>		
(21-38) <b>F</b>		
(1-20) <b>G</b>		
Not energy efficient - higher running costs		
<b>England &amp; Wales</b>	EU Directive 2002/91/EC	