

Peter David

Properties Ltd

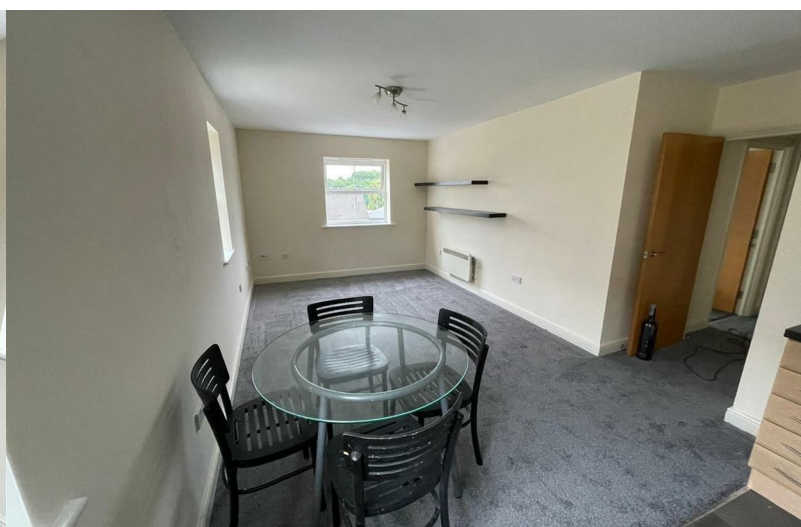
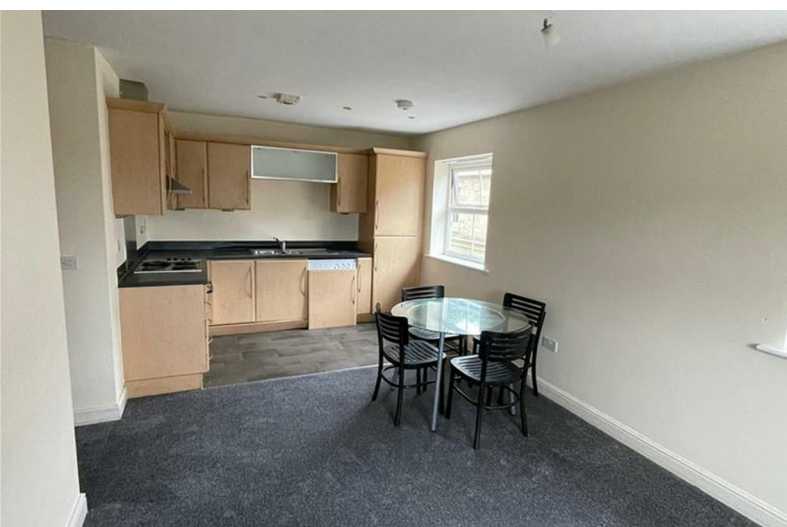
Residential Sales and Lettings



Yarn Court

Bailiff Bridge, HD6 4FS

£625 PCM



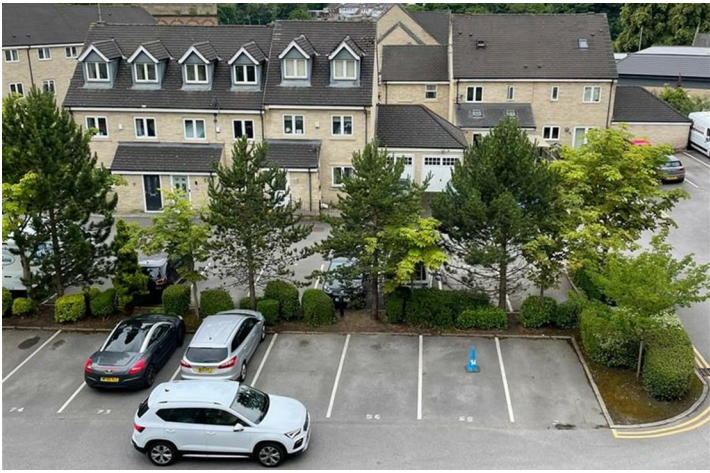
Yarn Court

Winding Rise, Bailiff Bridge, HD6 4FS

£625 PCM



A well-presented top floor apartment, offered to let with allocated parking. Comprising: a large open plan kitchen/living room, two double bedrooms and bathroom. Situated in the convenient and sought after location of Bailiff Bridge, the property is close to local amenities and in just a short drive to Brighouse Town Centre. Available immediately.



Road Map



Hybrid Map



Terrain Map

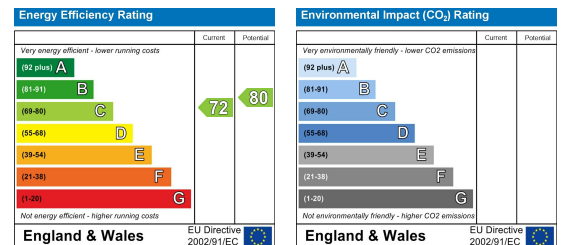


Floor Plan

Viewing

Please contact us on 01484 719191 if you wish to arrange a viewing appointment for this property or require further information.

Energy Efficiency Graph



These particulars are for guidance only and do not constitute any part of a contract. No person within the company has the authority to make or give any representation or warranty in respect of the property. All measurements are approximate and for illustrative purposes only. None of the services and fittings or equipment have been tested. These particulars whilst believed to be accurate should not be relied on as statements of fact, and purchasers must satisfy themselves by inspection or otherwise as to their accuracy. Although these particulars are thought to be materially correct their accuracy cannot be guaranteed and they do not form part of any contract.