

West Barnes Lanes New Malden KT3



- **Four Bedroom Detached Period House**
- **Large Rear Garden**
- **Off Street Parking**
- **Close to Motspur Park Station**

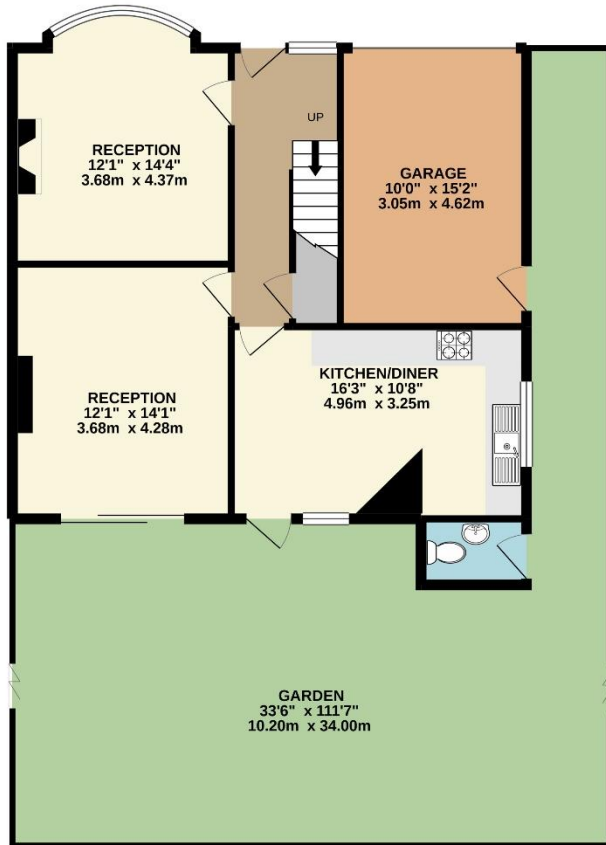
Price £995,000

An exciting opportunity to purchase an outstanding, 4-bedroom, detached period house, occupying a prominent plot within the ever-popular Motspur Park area. A large family home that has a spacious hallway with original panelling that leads to a front reception room with a bay window and feature fireplace. There is a second reception room with sliding patio doors giving direct access to the garden. On the first floor there are two double bedrooms and two further bedrooms one with a walk-in shower, together with a family bathroom. The property is located a short walk away from Motspur Park train station as well as nearby amenities, St Joseph Hood Playing Fields, and Fulham F.C. training ground. Viewings are highly recommended.





GROUND FLOOR
651 sq.ft. (60.5 sq.m.) approx.



1ST FLOOR
620 sq.ft. (57.6 sq.m.) approx.



TOTAL FLOOR AREA : 1271sq.ft. (118.1 sq.m.) approx.

Whilst every attempt has been made to ensure the accuracy of the floorplan contained here, measurements of doors, windows, rooms and any other items are approximate and no responsibility is taken for any error, omission or mis-statement. This plan is for illustrative purposes only and should be used as such by any prospective purchaser. The services, systems and appliances shown have not been tested and no guarantee as to their operability or efficiency can be given.

Made with Metropix ©2020

