

Coombe Road New Malden KT3

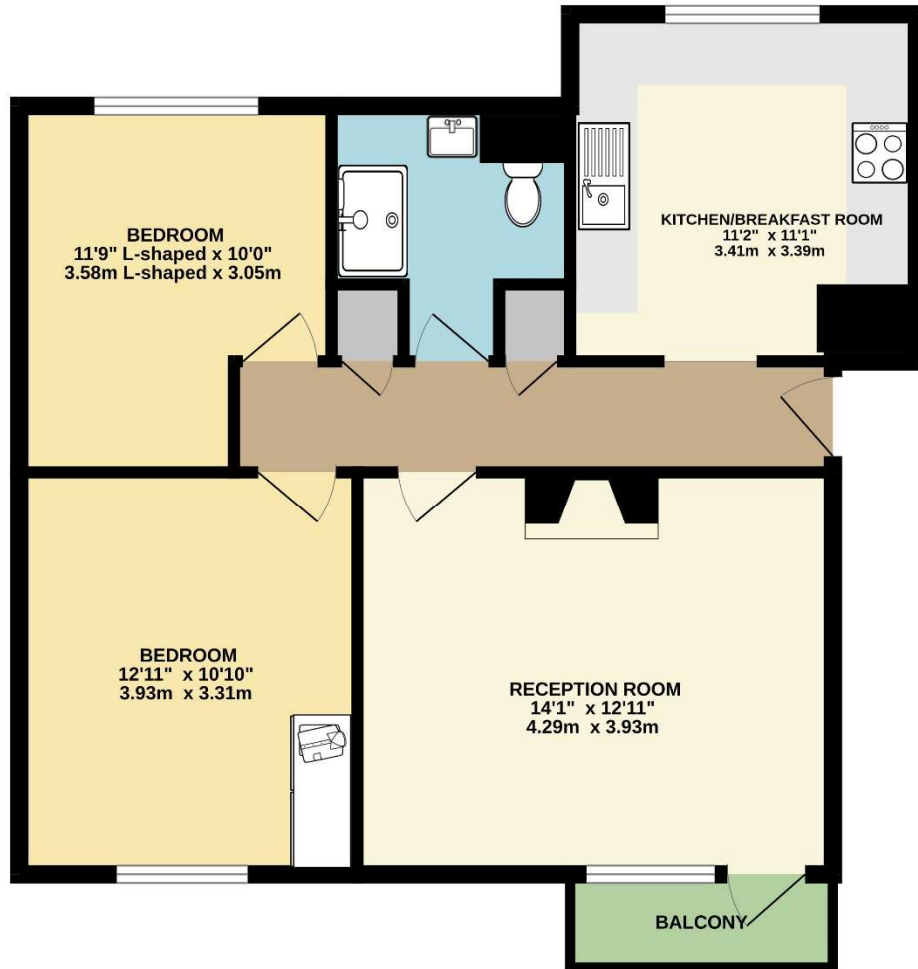


- Two Double Bedrooms
- Large Living Room
- Balcony
- Very Central Location
- Moments from The High Street
- Available in February

Price £1,750 pcm

Located within a very short walk of both the High Street and station, a first floor apartment offering excellent space throughout. The accommodation comprises a large living room with a balcony, a kitchen/breakfast room, two double bedrooms and a bathroom and further benefits include residents parking. The property is unfurnished and available late February. Council tax band C. Security deposit £2,019 (based on the asking price. EPC rating C.

FIRST FLOOR



TOTAL FLOOR AREA : 692sq.ft. (64.3 sq.m.) approx.

Whilst every attempt has been made to ensure the accuracy of the floorplan contained here, measurements of doors, windows, rooms and any other items are approximate and no responsibility is taken for any error, omission or mis-statement. This plan is for illustrative purposes only and should be used as such by any prospective purchaser. The services, systems and appliances shown have not been tested and no guarantee as to their operability or efficiency can be given.
Made with Metropix ©2025

