

## Lime Grove New Malden KT3



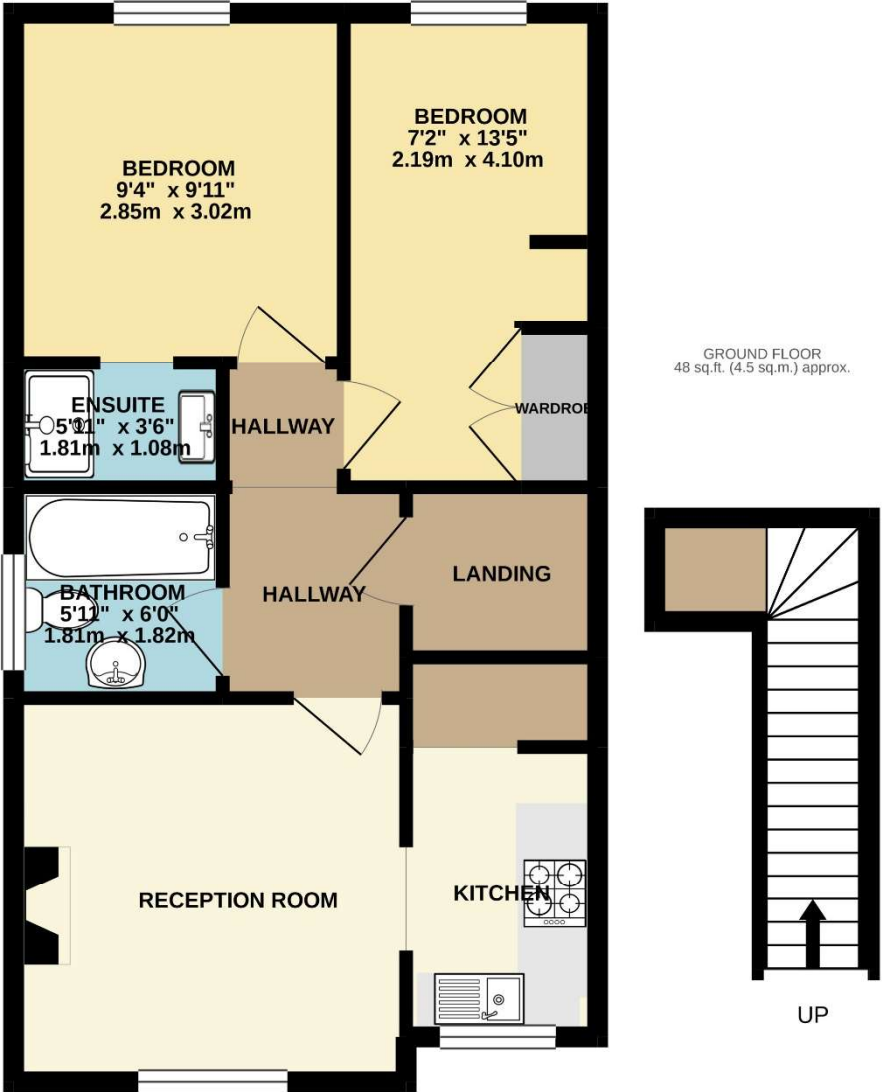
- **Two Bedrooms**
- **Two Bathrooms**
- **First Floor Flat**
- **`Groves` area of New Malden**

**Price £1,650 pcm**

A well presented first floor flat in a converted period house. The property provides light, spacious accommodation comprising a large living room to the front which opens onto a modern fitted kitchen with a small utility area; there are two double bedrooms, one of which benefits from an en-suite shower room and there is also a separate bathroom as well as side access which is ideal for storing bicycles. The property is ideally situated for all the local amenities, being just a few minutes walk to both New Malden High Street and the station. It is unfurnished and available now. EPC rating C. Council tax band C. Security Deposit £1,903.



1ST FLOOR  
490 sq.ft. (45.5 sq.m.) approx.



TOTAL FLOOR AREA : 538 sq.ft. (50.0 sq.m.) approx.

Whilst every attempt has been made to ensure the accuracy of the floorplan contained here, measurements of doors, windows, rooms and any other items are approximate and no responsibility is taken for any error, omission or mis-statement. This plan is for illustrative purposes only and should be used as such by any prospective purchaser. The services, systems and appliances shown have not been tested and no guarantee as to their operability or efficiency can be given.  
Made with Metropix ©2020



