

The Triangle Kingston Upon Thames KT1



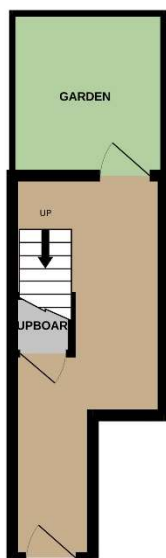
- Three Large Bedrooms
- Spacious Living Room
- Modern Fitted Kitchen
- Private Garden
- Popular Location
- Available Now

Price £2,395 pcm

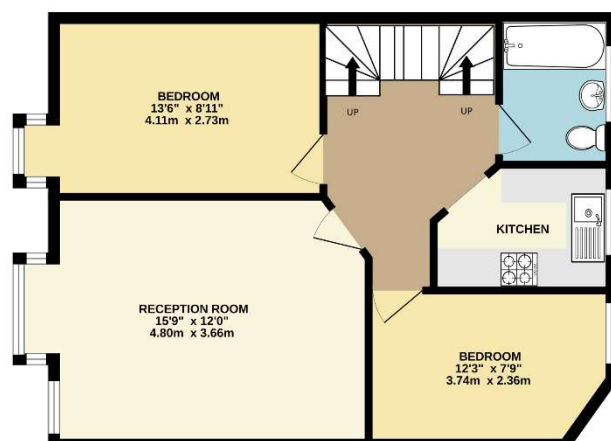
A very spacious maisonette set over three floors and offering excellent accommodation which has just undergone considerable refurbishment and redecoration. The entrance hall has a good storage cupboard and leads out to the private garden, the first floor has a large reception room, two bedrooms, a modern, newly fitted kitchen and a bathroom and on the second floor there is another large double bedroom with a walk-in wardrobe area. The Triangle is a popular location with local shops and parking and there is very easy access to Norbiton station, Kingston town centre and hospital, New Malden as well as Richmond Park. The property is unfurnished and available now. £2,763 (based on the asking price). Council tax band D. EPC rating D.



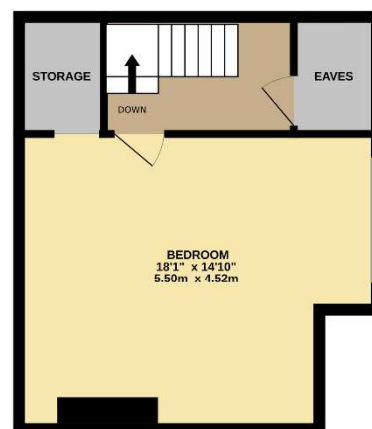
GROUND FLOOR



1ST FLOOR



2ND FLOOR



TOTAL FLOOR AREA : 1065sq.ft. (98.9 sq.m.) approx.

Whilst every attempt has been made to ensure the accuracy of the floorplan contained here, measurements of doors, windows, rooms and any other items are approximate and no responsibility is taken for any error, omission or mis-statement. This plan is for illustrative purposes only and should be used as such by any prospective purchaser. The services, systems and appliances shown have not been tested and no guarantee as to their operability or efficiency can be given.
Made with Metropix ©2025





