

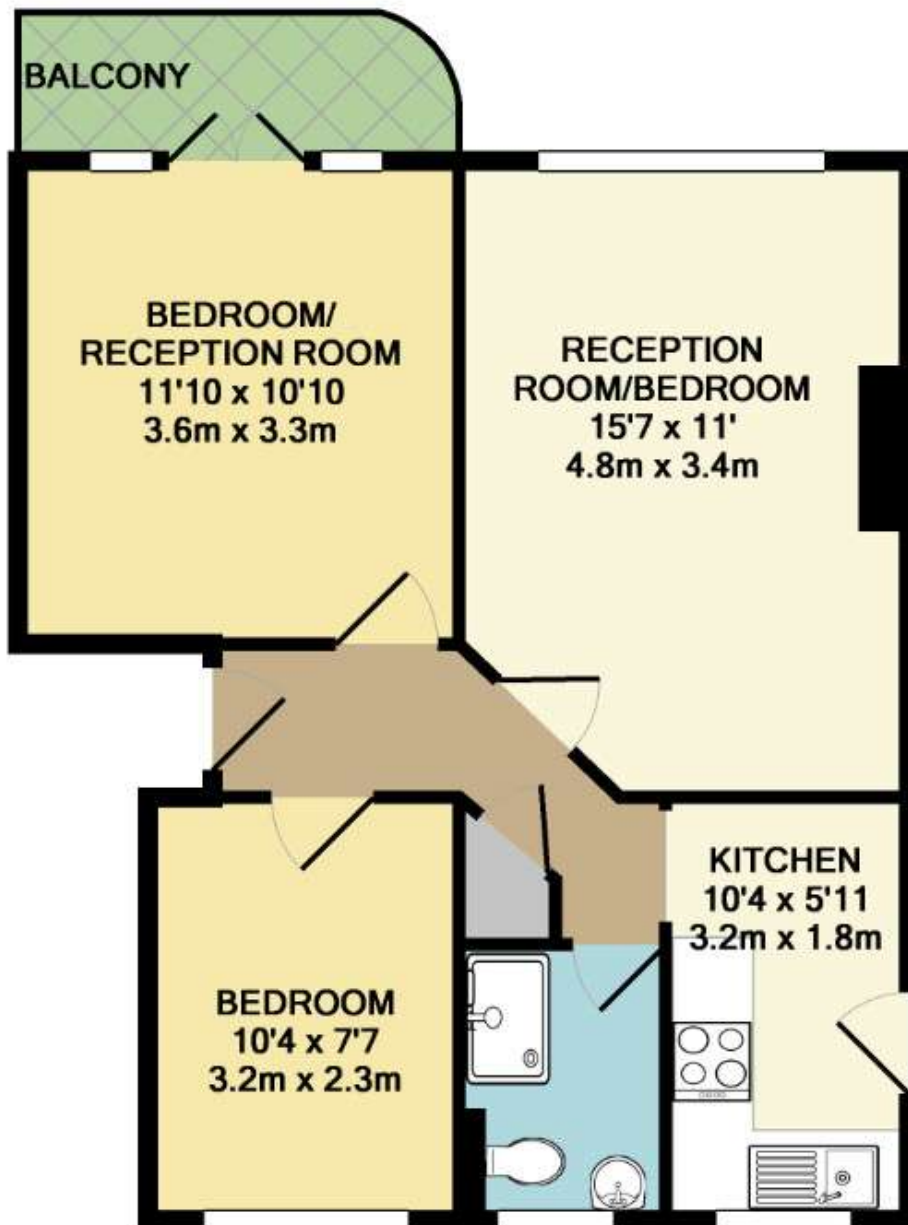
## Richmond Road London SW20



- **Two Bedroom Apartment**
- **Direct access to Private Balcony**
- **Residents Parking**
- **Close to Raynes Park Train Station**
- **Popular Residential Location**
- **Available From Mid July Onwards**

**Price £1,850 pcm**

Located in a popular block on this attractive, residential road, a smart apartment offering spacious accommodation. The property has a large living room, two double bedrooms, a fitted kitchen and a shower room. The property also offers a private balcony with direct access. There are attractive communal gardens and residents parking. Raynes Park station is just a short walk away. Available in July and unfurnished. EPC rating C. Council tax band D. Security Deposit £2,134 (based on the asking price).



**TOTAL APPROX. FLOOR AREA 509 SQ.FT. (47.2 SQ.M.)**

Whilst every attempt has been made to ensure the accuracy of the floor plan contained here, measurements of doors, windows, rooms and any other items are approximate and no responsibility is taken for any error, omission, or mis-statement. This plan is for illustrative purposes only and should be used as such by any prospective purchaser. The services, systems and appliances shown have not been tested and no guarantee as to their operability or efficiency can be given

Made with Metropix ©2015





