

Blagdon Road New Malden KT3

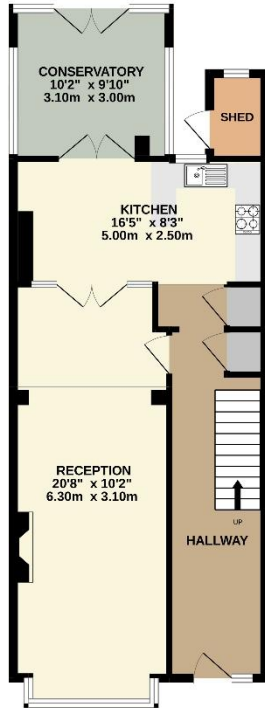


- **THREE DOUBLE BEDROOMS**
- **POPULAR CENTRAL LOCATION**
- **CATCHMENT FOR BURLINGTON SCHOOL**
- **CLOSE TO HIGH STREET & STATION**

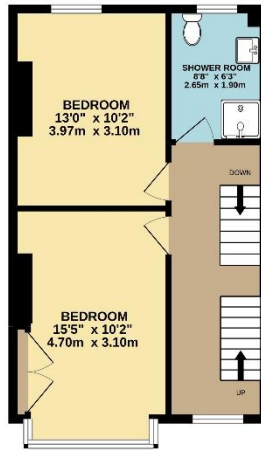
Price £2,700 pcm

A three double bedroom two bath mid terrace family home located in the heart of New Malden, walking distance to New Malden High Street, New Malden Station and Burlington Infants and junior schools. On the ground floor there is a good size living room, eat in kitchen and conservatory leading onto the garden. The first floor has two good sized double bedroom and a bathroom and the top floor has the master bedroom with an additional bathroom. The property is in a great location and catchment for good schools. The property is unfurnished and available end of June. EPC Rating C. Council Tax Band D. Security Deposit based upon an asking price offer £3,115.

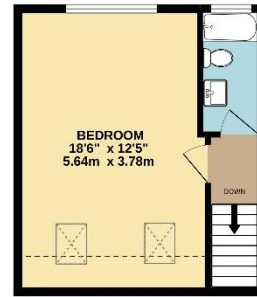
GROUND FLOOR
678 sq.ft. (63.0 sq.m.) approx.



1ST FLOOR
443 sq.ft. (41.1 sq.m.) approx.



2ND FLOOR
295 sq.ft. (27.4 sq.m.) approx.



TOTAL FLOOR AREA : 1416 sq.ft. (131.5 sq.m.) approx.

Whilst every attempt has been made to ensure the accuracy of the floorplan contained here, measurements of doors, windows, rooms and any other items are approximate and no responsibility is taken for any error, omission or mis-statement. This plan is for illustrative purposes only and should be used as such by any prospective purchaser. The services, systems and appliances shown have not been tested and no guarantee as to their operability or efficiency can be given.
Made with Metropix ©2022







