

Blakes Lane New Malden KT3



- **Modern, Light, First Floor Maisonette**
- **Generously Proportioned with Two Double Bedrooms**
- **Good Sized Kitchen**
- **Private West Facing Garden**
- **Parking and Garage**
- **Excellent Transport Links**

Price £415,000

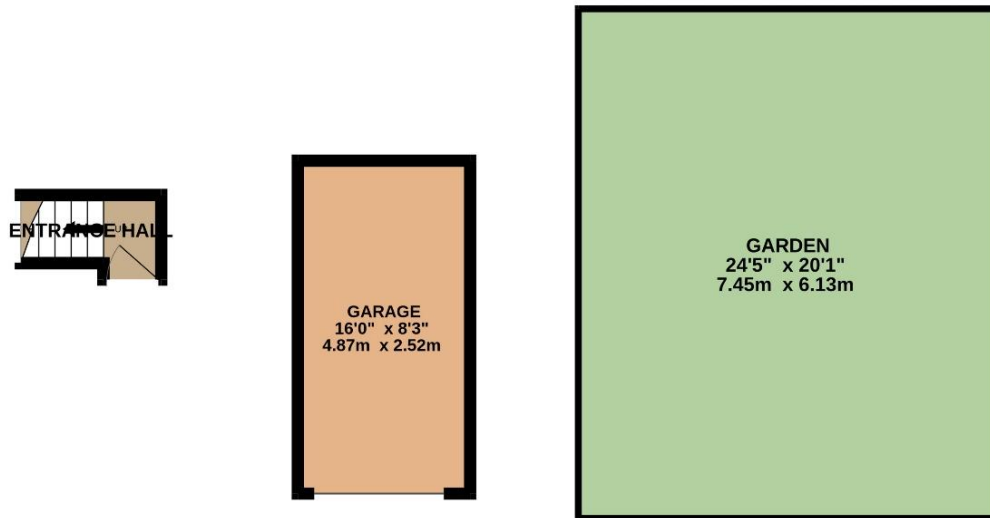
A superb, light filled, and generously proportioned modern first-floor maisonette, tastefully decorated throughout. The well-designed living/dining room overlooks the garden, complemented by a fitted kitchen with space for a breakfast table. The property features two large double bedrooms and a modern bathroom. Additional benefits include a West-facing private garden, shared parking, a brand-new boiler and its own separate front door. There is also ample storage including a loft and a garage. Conveniently located with easy access to excellent transport links and schools, this maisonette would make an ideal home for a first time buyer. EPC rating C. Council Tax Band C.



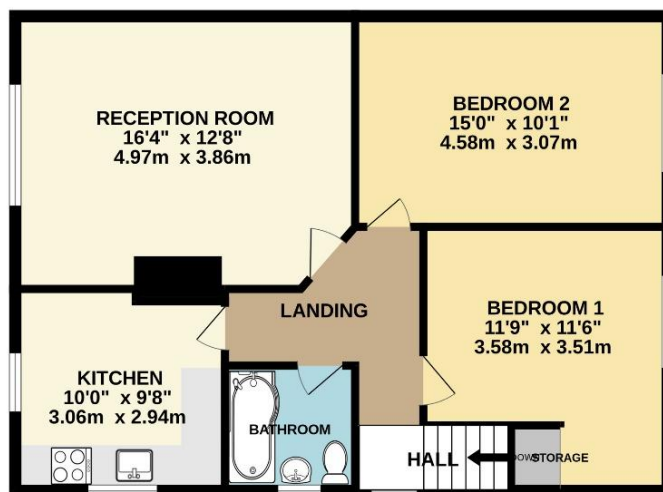




GROUND FLOOR



1ST FLOOR



TOTAL FLOOR AREA : 719sq.ft. (66.8 sq.m.) approx.

Whilst every attempt has been made to ensure the accuracy of the floorplan contained here, measurements of doors, windows, rooms and any other items are approximate and no responsibility is taken for any error, omission or mis-statement. This plan is for illustrative purposes only and should be used as such by any prospective purchaser. The services, systems and appliances shown have not been tested and no guarantee as to their operability or efficiency can be given.
Made with Metropix ©2025