

Thetford Road New Malden KT3

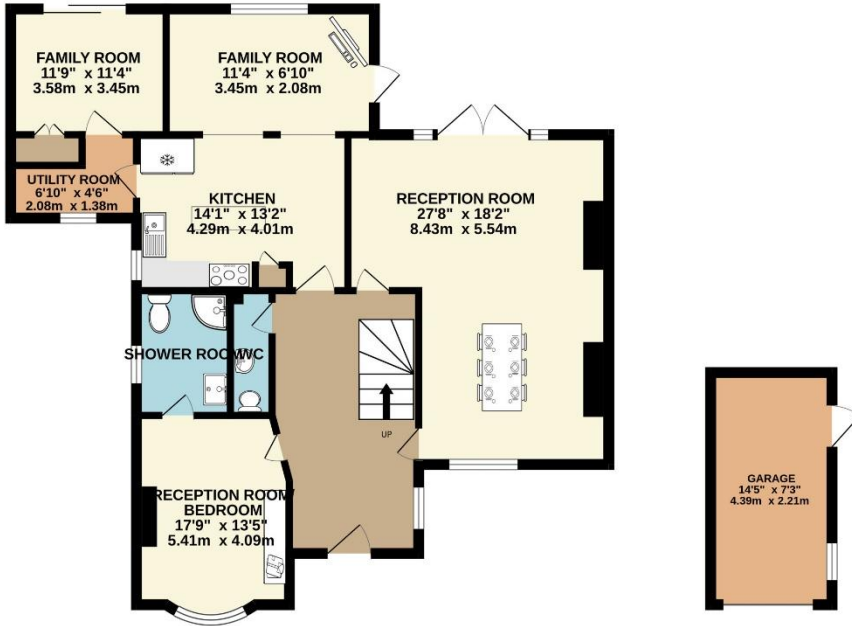


- **Superb Detached Family Home**
- **Four Bedrooms. Two Bathrooms**
- **Three/Four Reception Rooms**
- **Garage and Parking**
- **Good Size Rear Garden**
- **Available December/January**

Price £4,000 pcm

A detached four bedroom family home with a garage and off street parking for multiple cars, located on the popular Thetford Road. This property has a large ground floor, comprising three/four reception rooms, a kitchen and shower room, a separate downstairs WC and upstairs there are three further bedrooms and another bathroom. Further benefits include a garage, plenty of parking and a good size rear garden. Thetford Road is ideally located for many of the area's amenities including excellent schools and transport links. The property is unfurnished and available December/January. Security deposit £4,615 (based on the asking price). Council tax band G. EPC rating D.

GROUND FLOOR
796 sq.ft. (74.0 sq.m.) approx.



1ST FLOOR
393 sq.ft. (36.5 sq.m.) approx.



TOTAL FLOOR AREA : 2009sq.ft. (186.6 sq.m.) approx.

Whilst every attempt has been made to ensure the accuracy of the floorplan contained here, measurements of doors, windows, rooms and any other items are approximate and no responsibility is taken for any error, omission or mis-statement. This plan is for illustrative purposes only and should be used as such by any prospective purchaser. The services, systems and appliances shown have not been tested and no guarantee as to their operability or efficiency can be given.
Made with Metropix ©2024









