

Mount Road New Malden KT3



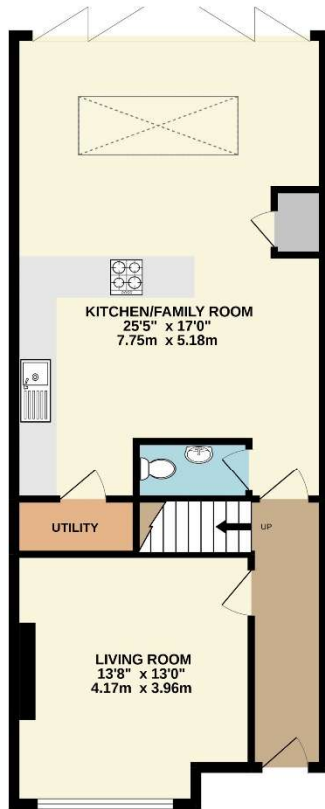
- **Four Bedroom Family House**
- **Stunning Kitchen/Family Room**
- **Two Bathrooms and Cloakroom**
- **Close to Excellent Schools**
- **Available In December**

Price £3,150 pcm

Set within the heart of the "Groves" area of New Malden, a stunning three storey family home offering excellent accommodation. The ground floor comprises a front reception, a wonderful kitchen/family room, a utility room and a cloakroom and upstairs over two floors there is a master bedroom with en suite shower room, three further bedrooms and a family bathroom. There is also a low maintenance rear garden. This house is set within the cul de sac part of Mount Road and there are excellent schools very close by; the High Street and station are also within a short walk. The house is offered as either unfurnished or part-furnished and is available in December. Security Deposit £3,634 (based on the asking price). Council tax band E. EPC rating D.



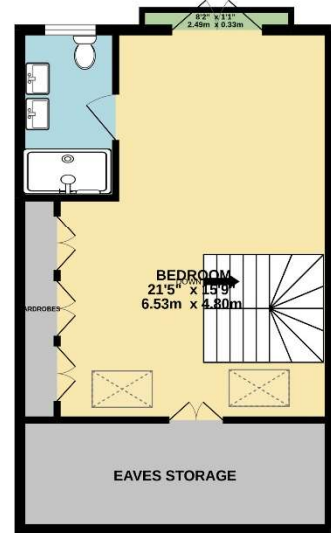
GROUND FLOOR



1ST FLOOR



2ND FLOOR



TOTAL FLOOR AREA : 1534sq.ft. (142.5 sq.m.) approx.

Whilst every attempt has been made to ensure the accuracy of the floorplan contained here, measurements of doors, windows, rooms and any other items are approximate and no responsibility is taken for any error, omission or mis-statement. This plan is for illustrative purposes only and should be used as such by any prospective purchaser. The services, systems and appliances shown have not been tested and no guarantee as to their operability or efficiency can be given.

Made with Metropix ©2022





