

Charter Court New Malden KT3

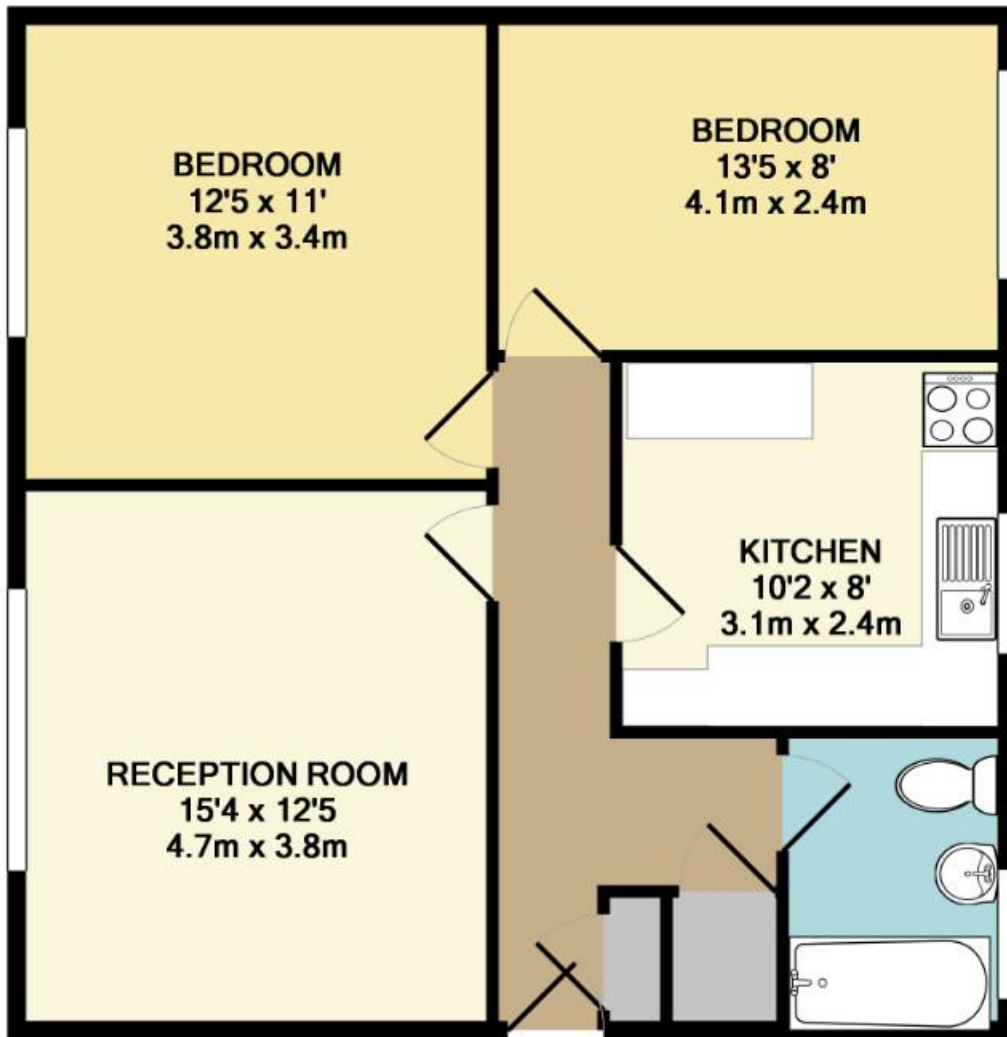


- **Private Gated Development**
- **Secure Intercom Entry System**
- **Large Two Double Bedroom Flat**
- **Walking Distance to New Malden High Street and Station**
- **Residents Parking**
- **Residents Bike Storage**

Price £1,750 pcm

A fantastic two double bedroom apartment set in this popular private gated development just moments from New Malden High Street and station. The property offers spacious accommodation with two double bedrooms, a large reception room, fitted kitchen with breakfast bar and appliances, a white three piece bathroom suite and residents parking and bike storage. Located conveniently close to multiple transport links as well as local amenities makes it a sought-after location and not one to be missed. Available middle of October and unfurnished. EPC rating D. Council Tax Band C. Security Deposit £2,019 (based on an asking price offer).





TOTAL APPROX. FLOOR AREA 680 SQ.FT. (63.2 SQ.M.)

Whilst every attempt has been made to ensure the accuracy of the floor plan contained here, measurements of doors, windows, rooms and any other items are approximate and no responsibility is taken for any error, omission, or mis-statement. This plan is for illustrative purposes only and should be used as such by any prospective purchaser. The services, systems and appliances shown have not been tested and no guarantee as to their operability or efficiency can be given

Made with Metropix ©2015



