

## Dukes Avenue New Malden KT3



- **Central New Malden Location**
- **Allocated Parking**
- **Open Plan Modern Apartment**
- **Close to Station and High Street**
- **One Double Bedroom Apartment**

**Price £355,000**

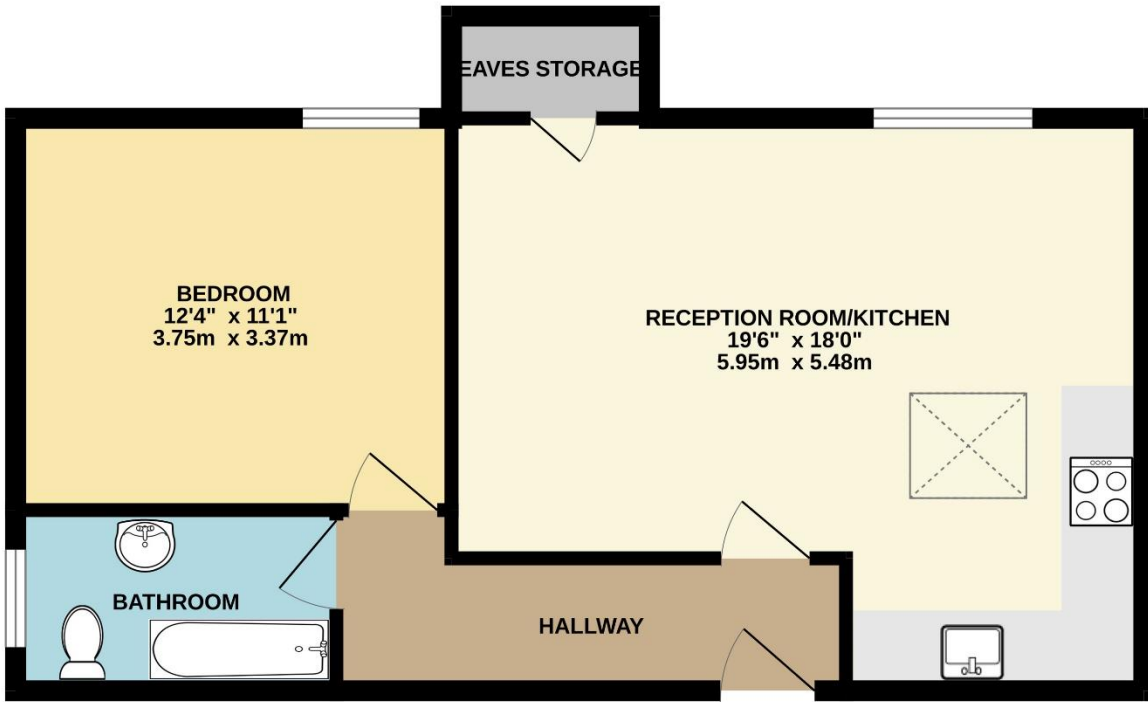
Located in the heart of New Malden, a modern bright one-bedroom top floor apartment. The property would make an ideal first time buy or as a rental investment. The accommodation comprises a large open plan living room with a fantastic sky light and fully fitted kitchen, a double bedroom and a bathroom. The property has the further benefit of allocated parking to the rear as well as cycle storage. Both the High Street and the station are just a short walk away, as is Beverley Park. With straightforward access to Raynes Park via the Beeline Way, Wimbledon and Kingston. Viewings are highly recommended. EPC rating B.







GROUND FLOOR  
529 sq.ft. (49.2 sq.m.) approx.



TOTAL FLOOR AREA : 529 sq.ft. (49.2 sq.m.) approx.

Whilst every attempt has been made to ensure the accuracy of the floorplan contained here, measurements of doors, windows, rooms and any other items are approximate and no responsibility is taken for any error, omission or mis-statement. This plan is for illustrative purposes only and should be used as such by any prospective purchaser. The services, systems and appliances shown have not been tested and no guarantee as to their operability or efficiency can be given.  
Made with Metropix ©2024