

Coombe Gardens New Malden KT3



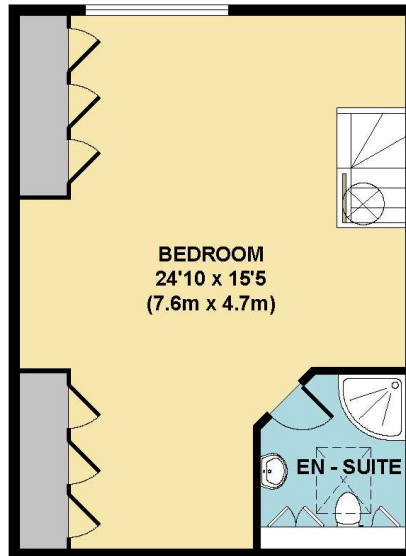
- **Four Double Bedrooms**
- **Three Bathrooms**
- **Modern Fully Fitted Kitchen**
- **Excellent Storage**
- **Off Street Parking**
- **Malden Hill Location**

Price £975,000

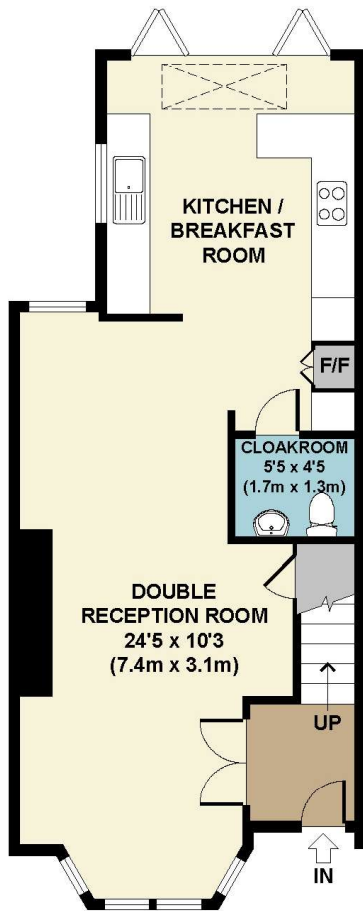
A recently built semi-detached family home in a central New Malden location close to the High Street which has been built to an extremely high standard and with superb attention to detail. The house offers fantastic family accommodation over three floors; the ground floor has a large open plan double reception room with underfloor heating, wood flooring, eco gas fire and built-in speaker; the stunning, modern kitchen/breakfast room comprises German built Hacker units with granite worktops, quality appliances and porcelain tiled flooring and full-width folding doors to the rear. Upstairs over two floors there are four good size bedrooms and three bathrooms, two of which are en suite. There are solid oak doors throughout, rear garden and off-street parking to the front. EPC rating C.



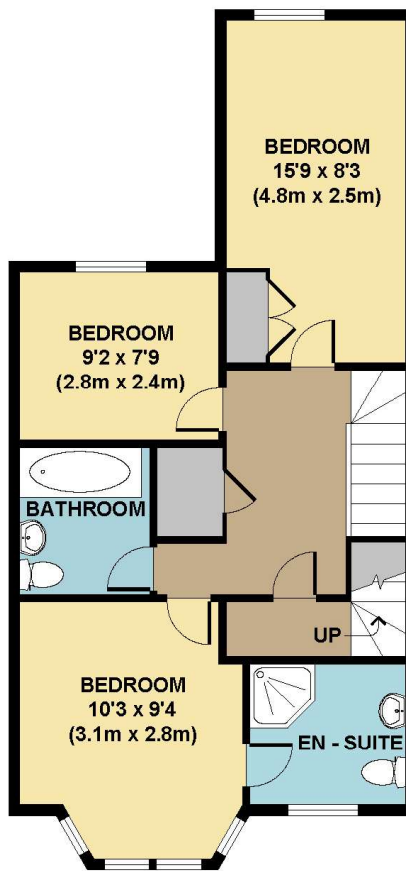




SECOND FLOOR
GROSS INTERNAL
FLOOR AREA 435 SQ FT



GROUND FLOOR
GROSS INTERNAL
FLOOR AREA 522 SQ FT



FIRST FLOOR
GROSS INTERNAL
FLOOR AREA 548 SQ FT

APPROX. GROSS INTERNAL FLOOR AREA 1505 SQ FT / 140 SQ M
 Floorplans are for identification and guideline purposes only, not to scale.
 Compliant with RICS code of measuring practice.
 Floorplans supplied by www.draftingfloorplan.com