

## George Road New Malden KT3



- **Three Bedroom Period End of Terrace House**
- **Two Receptions**
- **Two Bathrooms**
- **Westerly Facing Garden**
- **Garage**
- **Catchment for Excellent Schools**

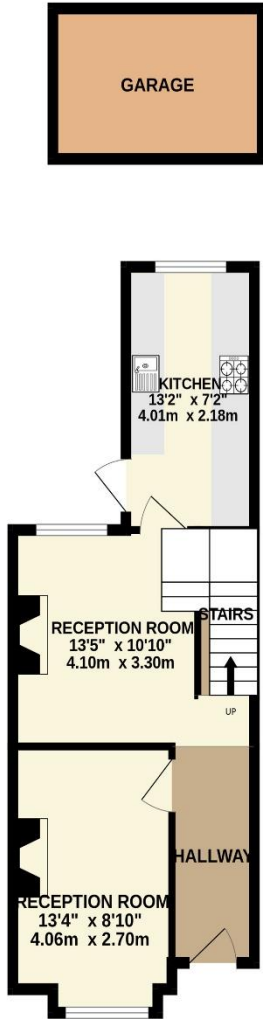
**Price £585,000**

A three bedroom end of terrace house period house laid out over three floors. On the ground floor there are two reception rooms and a galley style kitchen with access to a westerly garden, plus a garage an the end, with dual access from the garden and on to Queens Road. On the first floor, there are two double bedrooms and a family bathroom. The loft has been converted and has a master bedroom, with eaves storage and a shower room. The property is set in a popular location close to Blagdon Park and Burlington Primary School. This well presented, family home is close to good transport links, as well as the vibrant High Street of New Malden. No Onward Chain. Viewings highly recommended. EPC rating E. Council Tax Band D.

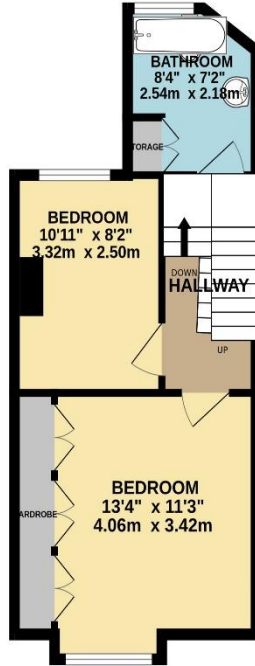




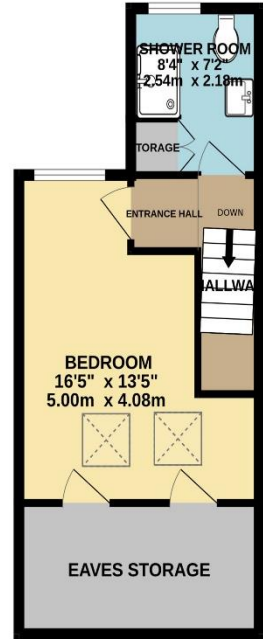
GROUND FLOOR  
479 sq.ft. (44.5 sq.m.) approx.



1ST FLOOR  
369 sq.ft. (34.3 sq.m.) approx.



2ND FLOOR  
367 sq.ft. (34.1 sq.m.) approx.



TOTAL FLOOR AREA : 1215 sq.ft. (112.8 sq.m.) approx.

Whilst every attempt has been made to ensure the accuracy of the floorplan contained here, measurements of doors, windows, rooms and any other items are approximate and no responsibility is taken for any error, omission or mis-statement. This plan is for illustrative purposes only and should be used as such by any prospective purchaser. The services, systems and appliances shown have not been tested and no guarantee as to their operability or efficiency can be given.

Made with Metropix ©2024