

## Tennyson Avenue New Malden KT3



- One Double Bedroom Conversion Flat
- Spacious Living/Dining/Kitchen
- Large Southerly Aspect Private Garden
- Close to Motspur Station
- Overlooking Playing Fields at the Rear
- No Onward Chain
- Share of Freehold

**Price £375,000**

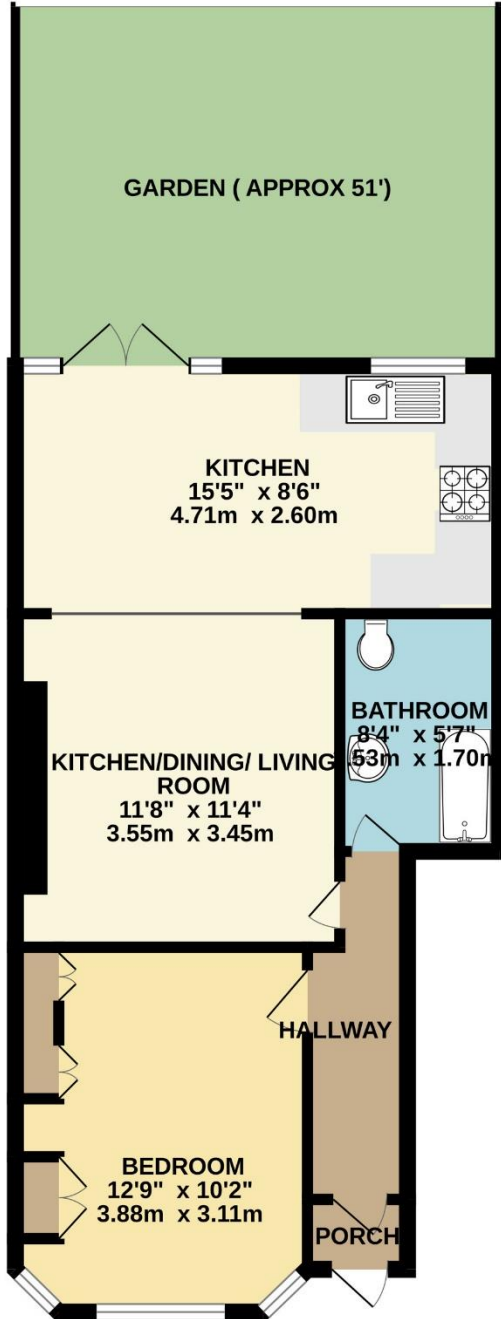
An extremely spacious, ground floor, one bedroom conversion flat with functional open plan living space, including a bright, living area with a feature fireplace. There is a designated dining space plus a fitted kitchen with standard appliances ideal for modern living. The space is perfect for entertaining. French doors lead out onto a large 50 ft southerly facing private garden with expansive, unspoiled views over the sports grounds behind. The garden has a decked and a lawn area with ample space for a summer house or office room. There is a large bedroom, which can accommodate a king size bed, plus there are built in wardrobes. There is a luxury bathroom with heated towel rail. The property is located within a few minutes' walk of Motspur Park station offering regular fast trains into central London; plus the property is within easy access of major roadways. A short walk away there are local shops and amenities, as well as being a short distance from St Joseph Hood playing fields. Free on street parking. A great starter home or ideal for investors. No Onward Chain. Share of Freehold. Council Tax Band C. EPC Rating C.







GROUND FLOOR  
493 sq.ft. (45.8 sq.m.) approx.



TOTAL FLOOR AREA : 493 sq.ft. (45.8 sq.m.) approx.

Whilst every attempt has been made to ensure the accuracy of the floorplan contained here, measurements of doors, windows, rooms and any other items are approximate and no responsibility is taken for any error, omission or mis-statement. This plan is for illustrative purposes only and should be used as such by any prospective purchaser. The services, systems and appliances shown have not been tested and no guarantee as to their operability or efficiency can be given.  
Made with Metropix ©2024